

Product datasheet

Natural Human Haptoglobin protein ab77872

1 图像

概述

产品名称	Natural人Haptoglobin蛋白
蛋白长度	Full length protein

描述

性质	Native
来源	Native
氨基酸序列	
种属	Human

技术指标

Our [Abpromise guarantee](#) covers the use of **ab77872** in the following tested applications.

The application notes include recommended starting dilutions; optimal dilutions/concentrations should be determined by the end user.

应用	SDS-PAGE Sandwich ELISA
纯度	> 95 % SDS-PAGE. >95% pure (SDS-PAGE): polymorphic form (mixture of 1-1, 2-1, and/or 2-2)
形式	Lyophilised

制备和贮存

稳定性和存储	Shipped at 4°C. Upon delivery aliquot and store at -20°C. Avoid freeze / thaw cycles. Deionized water.
复溶	Reconstitute using deionized water.

常规信息

功能	As a result of hemolysis, hemoglobin is found to accumulate in the kidney and is secreted in the urine. Haptoglobin captures, and combines with free plasma hemoglobin to allow hepatic
----	---

recycling of heme iron and to prevent kidney damage. Haptoglobin also acts as an Antimicrobial; Antioxidant, has antibacterial activity and plays a role in modulating many aspects of the acute phase response. Hemoglobin/haptoglobin complexes are rapidly cleared by the macrophage CD163 scavenger receptor expressed on the surface of liver Kupfer cells through an endocytic lysosomal degradation pathway.

Uncleaved haptoglobin, also known as zonulin, plays a role in intestinal permeability, allowing intercellular tight junction disassembly, and controlling the equilibrium between tolerance and immunity to non-self antigens.

#### 组织特异性

Expressed by the liver and secreted in plasma.

#### 疾病相关

Anhaptoglobinemia

#### 序列相似性

Belongs to the peptidase S1 family.

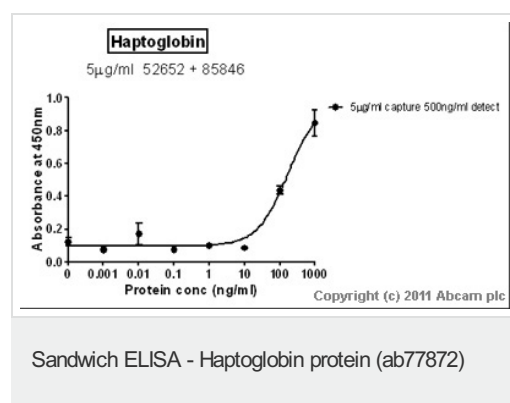
Contains 1 peptidase S1 domain.

Contains 2 Sushi (CCP/SCR) domains.

#### 细胞定位

Secreted.

## 图片



Standard Curve for Haptoglobin (Analyte:

[Haptoglobin protein \(ab77872\)](#)); dilution range

1pg/ml to 1µg/ml using Capture Antibody

[Mouse polyclonal to Haptoglobin \(ab52652\)](#) at

5µg/ml and Detector Antibody [Rabbit](#)

[polyclonal to Haptoglobin \(ab85846\)](#) at

0.5µg/ml.

**Please note:** All products are "FOR RESEARCH USE ONLY AND ARE NOT INTENDED FOR DIAGNOSTIC OR THERAPEUTIC USE"

## Our Abpromise to you: Quality guaranteed and expert technical support

- Replacement or refund for products not performing as stated on the datasheet
- Valid for 12 months from date of delivery
- Response to your inquiry within 24 hours
- We provide support in Chinese, English, French, German, Japanese and Spanish
- Extensive multi-media technical resources to help you
- We investigate all quality concerns to ensure our products perform to the highest standards

If the product does not perform as described on this datasheet, we will offer a refund or replacement. For full details of the Abpromise, please visit <http://www.abcam.cn/abpromise> or contact our technical team.

## Terms and conditions

- Guarantee only valid for products bought direct from Abcam or one of our authorized distributors