

Product datasheet

Native Human Fibronectin protein ab81743

2 图像

概述

产品名称	Native人Fibronectin蛋白
蛋白长度	Full length protein

描述

性质	Native
来源	Native
氨基酸序列	
Accession	P02751
种属	Human
分子量	220 kDa
氨基酸	32 to 2386

技术指标

Our [Abpromise guarantee](#) covers the use of **ab81743** in the following tested applications.

The application notes include recommended starting dilutions; optimal dilutions/concentrations should be determined by the end user.

应用	SDS-PAGE Other Western blot
纯度	> 95 % SDS-PAGE. ab81743 is purified from human plasma by column chromatography.
形式	Liquid

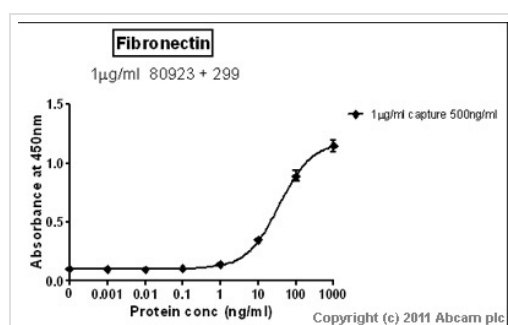
制备和贮存

稳定性和存储	Shipped on dry ice. Upon delivery aliquot and store at -80°C. Avoid freeze / thaw cycles. Preservative: None Constituents: 0.15M Sodium chloride, 0.1M Tris HCl, pH 7.4
--------	---

常规信息

功能	<p>Fibronectins bind cell surfaces and various compounds including collagen, fibrin, heparin, DNA, and actin. Fibronectins are involved in cell adhesion, cell motility, opsonization, wound healing, and maintenance of cell shape. Involved in osteoblast compaction through the fibronectin fibrillogenesis cell-mediated matrix assembly process, essential for osteoblast mineralization. Participates in the regulation of type I collagen deposition by osteoblasts.</p> <p>Anastellin binds fibronectin and induces fibril formation. This fibronectin polymer, named superfibronectin, exhibits enhanced adhesive properties. Both anastellin and superfibronectin inhibit tumor growth, angiogenesis and metastasis. Anastellin activates p38 MAPK and inhibits lysophospholipid signaling.</p>
组织特异性	<p>Plasma FN (soluble dimeric form) is secreted by hepatocytes. Cellular FN (dimeric or cross-linked multimeric forms), made by fibroblasts, epithelial and other cell types, is deposited as fibrils in the extracellular matrix. Ugl-Y1, Ugl-Y2 and Ugl-Y3 are found in urine.</p>
疾病相关	<p>Glomerulopathy with fibronectin deposits 2</p>
序列相似性	<p>Contains 12 fibronectin type-I domains. Contains 2 fibronectin type-II domains. Contains 16 fibronectin type-III domains.</p>
发展阶段	<p>Ugl-Y1, Ugl-Y2 and Ugl-Y3 are present in the urine from 0 to 17 years of age.</p>
翻译后修饰	<p>Sulfated.</p> <p>It is not known whether both or only one of Thr-2064 and Thr-2065 are/is glycosylated.</p> <p>Forms covalent cross-links mediated by a transglutaminase, such as F13A or TGM2, between a glutamine and the epsilon-amino group of a lysine residue, forming homopolymers and heteropolymers (e.g. fibrinogen-fibronectin, collagen-fibronectin heteropolymers).</p> <p>Phosphorylated by FAM20C in the extracellular medium.</p> <p>Proteolytic processing produces the C-terminal NC1 peptide, anastellin.</p>
细胞定位	<p>Secreted, extracellular space, extracellular matrix.</p>

图片



Sandwich ELISA - Native Human Fibronectin protein (ab81743)

Standard Curve for Fibronectin (Analyte: [Fibronectin protein \(Human\) \(ab81743\)](#)); dilution range 1pg/ml to 1µg/ml using Capture Antibody [Mouse monoclonal \[HFN 7.1\] to Fibronectin - BSA and Azide free \(ab80923\)](#) at 1µg/ml and Detector Antibody [Rabbit polyclonal to Fibronectin \(ab299\)](#) at 0.5µg/ml.

Western blot - Native Human Fibronectin protein
(ab81743)

Please note: All products are "FOR RESEARCH USE ONLY AND ARE NOT INTENDED FOR DIAGNOSTIC OR THERAPEUTIC USE"

Our Abpromise to you: Quality guaranteed and expert technical support

- Replacement or refund for products not performing as stated on the datasheet
- Valid for 12 months from date of delivery
- Response to your inquiry within 24 hours
- We provide support in Chinese, English, French, German, Japanese and Spanish
- Extensive multi-media technical resources to help you
- We investigate all quality concerns to ensure our products perform to the highest standards

If the product does not perform as described on this datasheet, we will offer a refund or replacement. For full details of the Abpromise, please visit <http://www.abcam.cn/abpromise> or contact our technical team.

Terms and conditions

- Guarantee only valid for products bought direct from Abcam or one of our authorized distributors