


Product datasheet

Anti-NSE antibody [NSE-P1] ab24709

1 图像

概述

|       |   |
|-------|---|
| 产品名称  | Anti-NSE抗体[NSE-P1]  |
| 描述    | 小鼠单克隆抗体[NSE-P1] to NSE  |
| 宿主    | Mouse   |
| 经测试应用 | 适用于: IHC-P, ELISA, WB   |
| 种属反应性 | 与反应: Human<br>预测可用于: Mouse, Rat, Chicken   |
| 免疫原   | Synthetic peptide:<br>LGDEARFAGHNFRNPSVL<br>, corresponding to C terminal amino acids 416-433 of NSE<br><a href="#">Run BLAST with</a> <a href="#">Run BLAST with</a> |

性能

|      |   |
|------|---|
| 形式   | Liquid  |
| 存放说明 | Shipped at 4°C. Upon delivery aliquot and store at -20°C. Avoid freeze / thaw cycles. |
| 存储溶液 | Preservative: 0.03% Thimerosal (merthiolate)<br>Constituents: PBS                     |
| 纯度   | Protein G purified  |
| 克隆   | 单克隆   |
| 克隆编号 | NSE-P1  |
| 同种型  | IgG1  |

应用

Our [Abpromise guarantee](#) covers the use of **ab24709** in the following tested applications.

The application notes include recommended starting dilutions; optimal dilutions/concentrations should be determined by the end user.

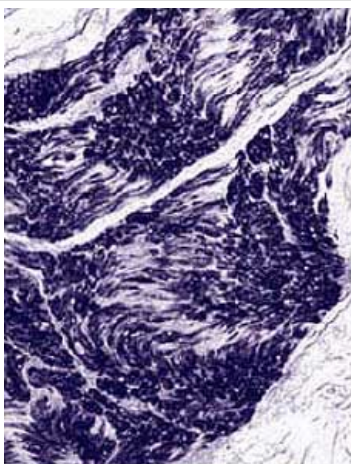
| 应用    | Ab评论 | 说明                                       |
|-------|------|--|
| IHC-P |      | Use at an assay dependent concentration. |

| 应用    | Ab评论 | 说明  |
|-------|------|---|
| ELISA |      | 1/500.                                      |
| WB    |      | 1/1000. Predicted molecular weight: 47 kDa. |

## 靶标

|              |  |
|--------------|--|
| <b>功能</b>    | Has neurotrophic and neuroprotective properties on a broad spectrum of central nervous system (CNS) neurons. Binds, in a calcium-dependent manner, to cultured neocortical neurons and promotes cell survival.                             |
| <b>组织特异性</b> | The alpha/alpha homodimer is expressed in embryo and in most adult tissues. The alpha/beta heterodimer and the beta/beta homodimer are found in striated muscle, and the alpha/gamma heterodimer and the gamma/gamma homodimer in neurons. |
| <b>通路</b>    | Carbohydrate degradation; glycolysis; pyruvate from D-glyceraldehyde 3-phosphate: step 4/5.  |
| <b>序列相似性</b> | Belongs to the enolase family.   |
| <b>发展阶段</b>  | During ontogenesis, there is a transition from the alpha/alpha homodimer to the alpha/beta heterodimer in striated muscle cells, and to the alpha/gamma heterodimer in nerve cells.  |
| <b>细胞定位</b>  | Cytoplasm. Cell membrane. Can translocate to the plasma membrane in either the homodimeric (alpha/alpha) or heterodimeric (alpha/gamma) form.  |

## 图片



ab24709 staining peripheral nerve fibers by Immunohistochemistry (Formalin/PFA-fixed paraffin-embedded sections).

Immunohistochemistry (Formalin/PFA-fixed paraffin-embedded sections) - Anti-NSE antibody [NSE-P1] (ab24709)

**Please note:** All products are "FOR RESEARCH USE ONLY AND ARE NOT INTENDED FOR DIAGNOSTIC OR THERAPEUTIC USE"

**Our Abpromise to you: Quality guaranteed and expert technical support**

- Replacement or refund for products not performing as stated on the datasheet
- Valid for 12 months from date of delivery
- Response to your inquiry within 24 hours
  
- We provide support in Chinese, English, French, German, Japanese and Spanish
- Extensive multi-media technical resources to help you
- We investigate all quality concerns to ensure our products perform to the highest standards

If the product does not perform as described on this datasheet, we will offer a refund or replacement. For full details of the Abpromise, please visit <http://www.abcam.cn/abpromise> or contact our technical team.

### **Terms and conditions**

---

- Guarantee only valid for products bought direct from Abcam or one of our authorized distributors