


Product datasheet

Anti-NRBF2 antibody ab85733

1 Abreviews 2 图像

概述

产品名称	Anti-NRBF2抗体
描述	兔多克隆抗体to NRBF2
宿主	Rabbit
经测试应用	适用于: WB, IP
种属反应性	与反应: Mouse, Human 预测可用于: Chimpanzee, Rhesus monkey, Gorilla, Orangutan 
免疫原	Synthetic peptide corresponding to a region between residue 237 and 287 of Human NRBF2 (NP_110386.2).
阳性对照	Whole cell lysate from HeLa, 293T and mouse NIH3T3 cells.

性能

形式	Liquid
存放说明	Shipped at 4°C. Upon delivery aliquot and store at -20°C. Avoid freeze / thaw cycles.
存储溶液	Preservative: 0.09% Sodium Azide Constituents: Tris citrate/phosphate, pH 7-8
纯度	Immunogen affinity purified
克隆	多克隆
同种型	IgG

应用

Our [Abpromise guarantee](#) covers the use of **ab85733** in the following tested applications.

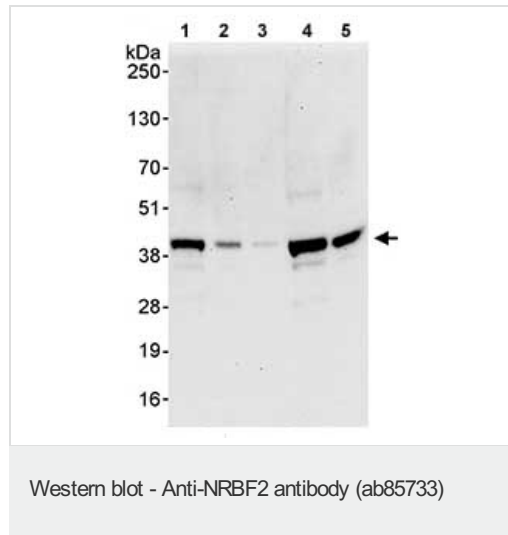
The application notes include recommended starting dilutions; optimal dilutions/concentrations should be determined by the end user.

应用	Ab评论	说明
WB		1/2000 - 1/10000. Predicted molecular weight: 32 kDa.
IP		Use at 2-5 µg/mg of lysate.

靶标

功能	May modulate transcriptional activation by target nuclear receptors. Can act as transcriptional activator (in vitro).
组织特异性	Detected in keratinocytes, liver and placenta.
细胞定位	Nucleus. Cytoplasm.

图片



All lanes : Anti-NRBF2 antibody (ab85733) at 0.4 µg/ml

Lane 1 : Whole cell lysate from HeLa cells at 50 µg

Lane 2 : Whole cell lysate from HeLa cells at 15 µg

Lane 3 : Whole cell lysate from HeLa cells at 5 µg

Lane 4 : Whole cell lysate from 293T cells at 50 µg

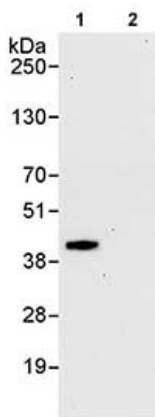
Lane 5 : Whole cell lysate from NIH3T3 cells at 50 µg

Developed using the ECL technique.

Predicted band size: 32 kDa

Observed band size: 40 kDa

Exposure time: 30 seconds



Immunoprecipitation - Anti-NRBF2 antibody
(ab85733)

Detection of Human NRBF2 in Immunoprecipitates of Whole cell lysate from HeLa cells (1 mg for IP, 20% of IP loaded) using ab85733 at 3 $\mu\text{g}/\text{mg}$ lysate for IP (Lane 1) and at 1 $\mu\text{g}/\text{ml}$ for subsequent Western blot detection. Lane 2 represents control IgG IP. Detection: Chemiluminescence with an exposure time of 30 seconds.

Please note: All products are "FOR RESEARCH USE ONLY AND ARE NOT INTENDED FOR DIAGNOSTIC OR THERAPEUTIC USE"

Our Abpromise to you: Quality guaranteed and expert technical support

- Replacement or refund for products not performing as stated on the datasheet
- Valid for 12 months from date of delivery
- Response to your inquiry within 24 hours
- We provide support in Chinese, English, French, German, Japanese and Spanish
- Extensive multi-media technical resources to help you
- We investigate all quality concerns to ensure our products perform to the highest standards

If the product does not perform as described on this datasheet, we will offer a refund or replacement. For full details of the Abpromise, please visit <http://www.abcam.cn/abpromise> or contact our technical team.

Terms and conditions

- Guarantee only valid for products bought direct from Abcam or one of our authorized distributors