


Product datasheet

Anti-NR2F2 antibody ab50487

★☆☆☆☆ 1 Abreviews 3 References 3 图像

概述

产品名称	Anti-NR2F2抗体
描述	兔多克隆抗体to NR2F2
经测试应用	适用于: WB, IHC-P, ELISA
种属反应性	与反应: Human 预测可用于: Mouse, Rat, Cow, Dog, Pig, Zebrafish 
免疫原	A region within synthetic peptide: KVGMRREAVQ RGRMPPTQPT HGQFALTNGD PLNCHSYLSG YISLLLRAEP, corresponding to amino acids 141-190 of Human NR2F2 Run BLAST with ExPASy Run BLAST with NCBI
阳性对照	Transfected 293T cell lysate; Epithelial cells of renal tubule of human kidney

性能

形式	Liquid
存放说明	Shipped at 4°C. Upon delivery aliquot and store at -20°C. Avoid freeze / thaw cycles.
存储溶液	Preservative: None Constituents: 2% Sucrose, PBS
纯度	Immunogen affinity purified
克隆	多克隆
同种型	IgG

应用

Our [Abpromise guarantee](#) covers the use of **ab50487** in the following tested applications.

The application notes include recommended starting dilutions; optimal dilutions/concentrations should be determined by the end user.

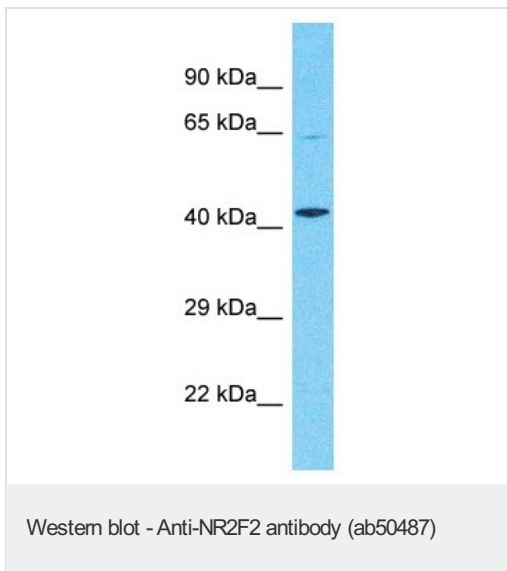
应用	Ab 评论	说明
WB		Use a concentration of 1 µg/ml. Detects a band of approximately 46 kDa (predicted molecular weight: 46 kDa). Good results were obtained when blocked with 5% non-fat dry milk in 0.05% PBS-T.
IHC-P		Use a concentration of 4 - 8 µg/ml.

ELISA Use at an assay dependent concentration.
ELISA titre using peptide based assay: 1/312500.

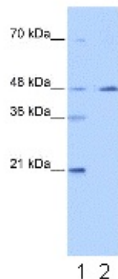
靶标

功能	Ligand-activated transcription factor. Activated by high concentrations of 9-cis-retinoic acid and all-trans-retinoic acid, but not by dexamethasone, cortisol or progesterone (in vitro). Regulation of the apolipoprotein A-I gene transcription. Binds to DNA site A.
组织特异性	Ubiquitous.
疾病相关	Congenital heart defects, multiple types, 4
序列相似性	Belongs to the nuclear hormone receptor family. NR2 subfamily. Contains 1 nuclear receptor DNA-binding domain.
细胞定位	Nucleus.

Anti-NR2F2 antibody 图像



Predicted band size : 46 kDa
Western blot analysis of MCF7 whole cell lysate labelling NR2F2 with ab50487 at 1.0µg/ml.



Western blot - NRF2 antibody (ab50487)

Lane 1 : Marker

Lane 2 : Anti-NRF2 antibody (ab50487) at 1 µg/ml

Lane 1 : As above

Lane 2 : Transfected 293T cell lysate

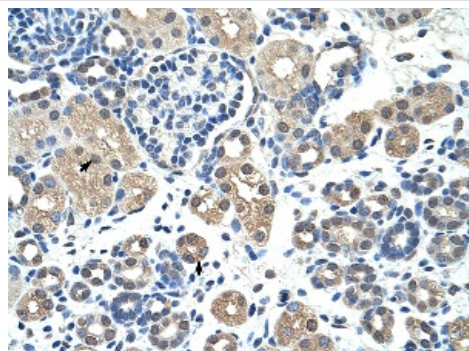
Secondary

HRP conjugated anti-Rabbit IgG at 1/50000 dilution

Predicted band size : 46 kDa

Observed band size : 46 kDa

Gel concentration: 12%



Immunohistochemistry (Formalin/PFA-fixed paraffin-embedded sections) - Anti-NRF2 antibody (ab50487)

Immunohistochemistry (Formalin/PFA-fixed paraffin-embedded sections) analysis of human kidney tissue labelling NRF2 with ab50487 at 4-8µg/ml. Arrows indicate positively labelled epithelial cells of renal tubule. Magnification: 400x.

Please note: All products are "FOR RESEARCH USE ONLY AND ARE NOT INTENDED FOR DIAGNOSTIC OR THERAPEUTIC USE"

Our Abpromise to you: Quality guaranteed and expert technical support

- Replacement or refund for products not performing as stated on the datasheet
- Valid for 12 months from date of delivery
- Response to your inquiry within 24 hours
- We provide support in Chinese, English, French, German, Japanese and Spanish
- Extensive multi-media technical resources to help you
- We investigate all quality concerns to ensure our products perform to the highest standards

If the product does not perform as described on this datasheet, we will offer a refund or replacement. For full details of the Abpromise, please visit <http://www.abcam.cn/abpromise> or contact our technical team.

Terms and conditions

- Guarantee only valid for products bought direct from Abcam or one of our authorized distributors