

Product datasheet

Anti-NPM2 antibody ab83310

1 图像

概述

产品名称	Anti-NPM2抗体
描述	兔多克隆抗体to NPM2
经测试应用	适用于: WB, ELISA
种属反应性	与反应: Human 预测可用于: Cat 
免疫原	Synthetic peptide corresponding to a region within the N terminal amino acids 36-85 (LEGKQSCRL LHTICLGEKA KEEMHRVEIL PPANQEDKKM QPVTIASLQA) of human NPM2 (NP_877724). Run BLAST with ExPASy Run BLAST with NCBI

性能

形式	Liquid
存放说明	Shipped at 4°C. Upon delivery aliquot and store at -20°C or -80°C. Avoid repeated freeze / thaw cycles.
存储溶液	Preservative: None Constituents: 2% Sucrose, PBS
纯度	Immunogen affinity purified
纯化说明	Purified by peptide affinity chromatography method.
克隆	多克隆
同种型	IgG

应用

Our [Abpromise guarantee](#) covers the use of **ab83310** in the following tested applications.

The application notes include recommended starting dilutions; optimal dilutions/concentrations should be determined by the end user.

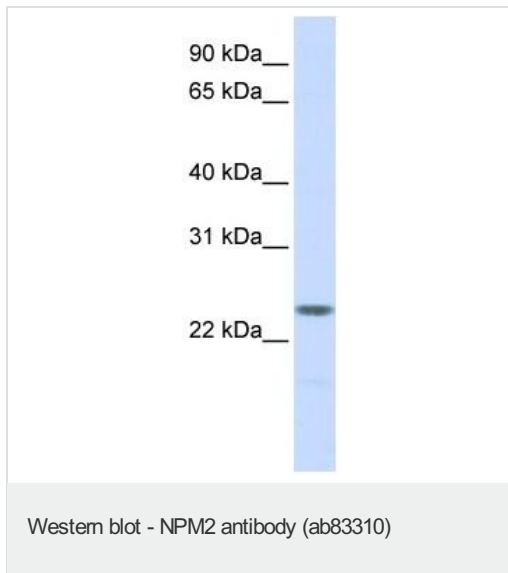
应用	Ab评论	说明
WB		Use a concentration of 1 µg/ml. Predicted molecular weight: 24 kDa. Good results were obtained when blocked with 5% non-fat dry milk in 0.05% PBS-T.

ELISA Use at an assay dependent concentration.
ELISA titre using peptide based assay, 1:312500.

靶标

功能	Core histones chaperone involved in chromatin reprogramming, specially during fertilization and early embryonic development. Probably involved in sperm DNA decondensation during fertilization.
序列相似性	Belongs to the nucleoplasmin family.
结构域	The acidic tract A2 mediates histone binding.
细胞定位	Nucleus. Found in the oocyte nucleus before nuclear membrane breakdown, after which it is redistributed to the cytoplasm.

Anti-NPM2 antibody 图像



Anti-NPM2 antibody (ab83310) at 1 µg/ml +
placenta lysate at 10 µg with in 5% skim milk /
PBS buffer

Secondary

HRP conjugated anti-Rabbit IgG at 1/50000
dilution

Predicted band size : 24 kDa

Observed band size : 24 kDa

Please note: All products are "FOR RESEARCH USE ONLY AND ARE NOT INTENDED FOR DIAGNOSTIC OR THERAPEUTIC USE"

Our Abpromise to you: Quality guaranteed and expert technical support

- Replacement or refund for products not performing as stated on the datasheet
- Valid for 12 months from date of delivery
- Response to your inquiry within 24 hours
- We provide support in Chinese, English, French, German, Japanese and Spanish
- Extensive multi-media technical resources to help you
- We investigate all quality concerns to ensure our products perform to the highest standards

If the product does not perform as described on this datasheet, we will offer a refund or replacement. For full details of the Abpromise, please visit <http://www.abcam.cn/abpromise> or contact our technical team.

Terms and conditions

- Guarantee only valid for products bought direct from Abcam or one of our authorized distributors