


Product datasheet

Anti-NAP1L1 antibody ab21630

★★★★☆ 2 Abreviews 3 References 4 图像

概述

产品名称	Anti-NAP1L1抗体
描述	兔多克隆抗体to NAP1L1
经测试应用	适用于: IHC-P, WB, ICC/IF
种属反应性	与反应: Human 预测可用于: Mouse, Rat, Dog, Xenopus laevis 
免疫原	Synthetic peptide conjugated to KLH derived from within residues 350 to the C-terminus of Human NAP1L1. 参阅Abcam的 专有抗源政策 (Peptide available as ab22417 .)
阳性对照	This antibody gave a positive signal in the following whole cell lysates: U2OS (+/- ionizing radiation); HeLa; A431; HEK293. This antibody gave a positive signal in the following tissues: Formalin Fixed Paraffin Embedded Normal Human Skin.

性能

形式	Liquid
存放说明	Shipped at 4°C. Store at +4°C short term (1-2 weeks). Upon delivery aliquot. Store at -20°C or -80°C. Avoid freeze / thaw cycle.
存储溶液	Preservative: 0.02% Sodium Azide Constituents: 1% BSA, PBS, pH 7.4
纯度	Immunogen affinity purified
克隆	多克隆
同种型	IgG

应用

Our [Abpromise guarantee](#) covers the use of **ab21630** in the following tested applications.

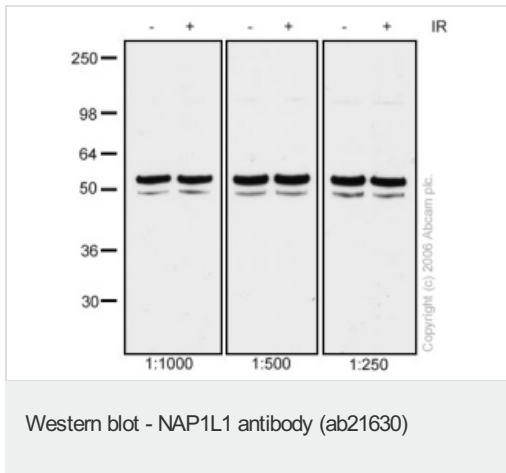
The application notes include recommended starting dilutions; optimal dilutions/concentrations should be determined by the end user.

应用	Ab评论	说明
IHC-P		Use a concentration of 5 µg/ml. Perform heat mediated antigen retrieval before commencing with IHC staining protocol.
WB	★★★★☆	1/250 - 1/1000. Detects a band of approximately 52 kDa (predicted molecular weight: 45 kDa).
ICC/IF		Use a concentration of 1 µg/ml.

靶标

功能	May be involved in modulating chromatin formation and contribute to regulation of cell proliferation.
组织特异性	Ubiquitously expressed.
序列相似性	Belongs to the nucleosome assembly protein (NAP) family.
结构域	The acidic domains are probably involved in the interaction with histones.
翻译后修饰	Polyglutamylated by TTL4, a modification that occurs exclusively on glutamate residues and results in polyglutamate chains on the gamma-carboxyl group. Some residues may also be monoglycylated but not polyglycylated due to the absence of functional TTL10 in human.
细胞定位	Nucleus. Melanosome. Identified by mass spectrometry in melanosome fractions from stage I to stage IV.

图片



Lanes 1 - 2 : Anti-NAP1L1 antibody

(ab21630) at 1/1000 dilution

Lanes 3 - 4 : Anti-NAP1L1 antibody

(ab21630) at 1/500 dilution

Lanes 5 - 6 : Anti-NAP1L1 antibody

(ab21630) at 1/250 dilution

Lane 1 : U2OS cell lysate

Lane 2 : U2OS cell lysate treated with ionizing radiation

Lane 3 : U2OS cell lysate

Lane 4 : U2OS cell lysate treated with ionizing radiation

Lane 5 : U2OS cell lysate

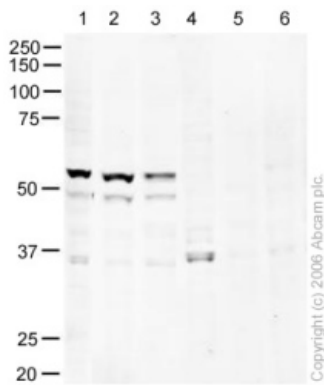
Lane 6 : U2OS cell lysate treated with ionizing radiation

Performed under reducing conditions.

Predicted band size : 45 kDa

Observed band size : 52 kDa

Additional bands at : 49 kDa (possible cleavage fragment, cross reactivity).



Western blot - NAP1L1 antibody (ab21630)

All lanes : Anti-NAP1L1 antibody (ab21630)
at 1 µg/ml

Lane 1 : HeLa whole cell lysate at 20 µg

Lane 2 : A431 whole cell lysate at 20 µg

Lane 3 : HEK293 whole cell lysate at 20 µg

Lane 4 : HeLa whole cell lysate at 20 µg with

Human NAP1L1 peptide ([ab22417](#)) at 1 µg/ml

Lane 5 : A431 whole cell lysate with Human
NAP1L1 peptide ([ab22417](#)) at 1 µg/ml

Lane 6 : HEK293 whole cell lysate at 20 µg
with Human NAP1L1 peptide ([ab22417](#)) at 1
µg/ml

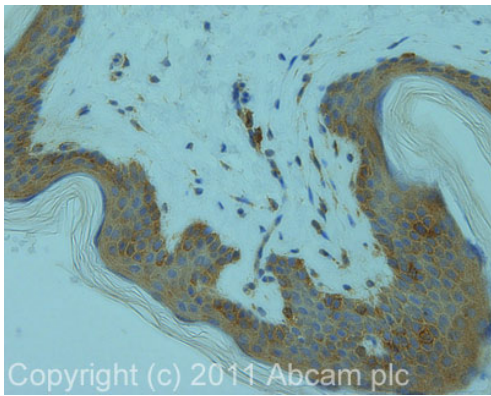
Secondary

Alexa fluor goat polyclonal to rabbit IgG at
1/10000 dilution

Predicted band size : 45 kDa

Observed band size : 52 kDa

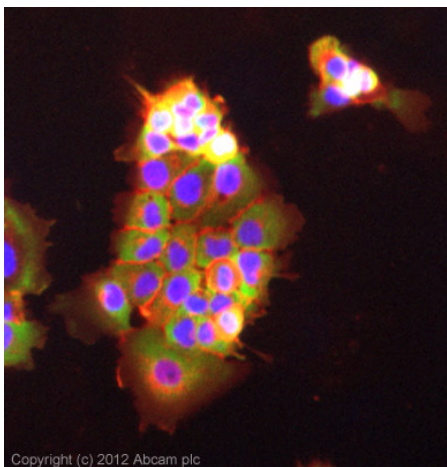
Additional bands at : 35 kDa (possible
cross reactivity, but this band is not
blocked), 49 kDa (possible cleavage
fragment, cross reactivity).



Immunohistochemistry (Formalin/PFA-fixed paraffin-embedded sections) - Anti-NAP1L1 antibody (ab21630)

IHC image of ab21630 staining in human skin formalin fixed paraffin embedded tissue section, performed on a Leica Bond™ system using the standard protocol F. The section was pre-treated using heat mediated antigen retrieval with sodium citrate buffer (pH6, epitope retrieval solution 1) for 20 mins. The section was then incubated with ab21630, 5µg/ml, for 15 mins at room temperature and detected using an HRP conjugated compact polymer system. DAB was used as the chromogen. The section was then counterstained with haematoxylin and mounted with DPX.

For other IHC staining systems (automated and non-automated) customers should optimize variable parameters such as antigen retrieval conditions, primary antibody concentration and antibody incubation times.



Immunocytochemistry/ Immunofluorescence - Anti-NAP1L1 antibody (ab21630)

ICC/IF image of ab21630 stained A431 cells. The cells were 4% formaldehyde fixed (10 min) and then incubated in 1%BSA / 10% normal goat serum / 0.3M glycine in 0.1% PBS-Tween for 1h to permeabilise the cells and block non-specific protein-protein interactions. The cells were then incubated with the antibody (ab21630, 5µg/ml) overnight at +4°C. The secondary antibody (green) was [ab96899](#), DyLight® 488 goat anti-rabbit IgG (H+L) used at a 1/250 dilution for 1h. Alexa Fluor® 594 WGA was used to label plasma membranes (red) at a 1/200 dilution for 1h. DAPI was used to stain the cell nuclei (blue) at a concentration of 1.43µM.

Please note: All products are "FOR RESEARCH USE ONLY AND ARE NOT INTENDED FOR DIAGNOSTIC OR THERAPEUTIC USE"

Our Abpromise to you: Quality guaranteed and expert technical support

- Replacement or refund for products not performing as stated on the datasheet
- Valid for 12 months from date of delivery

- Response to your inquiry within 24 hours
- We provide support in Chinese, English, French, German, Japanese and Spanish
- Extensive multi-media technical resources to help you
- We investigate all quality concerns to ensure our products perform to the highest standards

If the product does not perform as described on this datasheet, we will offer a refund or replacement. For full details of the Abpromise, please visit <http://www.abcam.cn/abpromise> or contact our technical team.

Terms and conditions

- Guarantee only valid for products bought direct from Abcam or one of our authorized distributors