

Product datasheet

Anti-Mitofusin 1 antibody ab104274

★★★★★ 3 Abreviews 10 References 2 图像

概述

| | |
|--------------|---|
| 产品名称 | Anti-Mitofusin 1 抗体 |
| 描述 | 兔多克隆抗体 to Mitofusin 1 |
| 宿主 | Rabbit |
| 经测试应用 | 适用于: IP, WB, ICC/IF |
| 种属反应性 | 与反应: Mouse, Rat, Human 预测可用于: Rabbit, Horse, Cow, Cat, Dog, Pig |
| 免疫原 | Synthetic peptide corresponding to Human Mitofusin 1 aa 683-732. Sequence: QVDITQKQLEEEIARLPKEIDQLEKIQNNSKLLRNKAVQLENELENFTKQ Database link: Q8R4Z9 Run BLAST with Run BLAST with |
| 阳性对照 | Human placenta lysate |

性能

| | |
|-------------|--|
| 形式 | Liquid |
| 存放说明 | Shipped at 4°C. Upon delivery aliquot and store at -20°C. Avoid repeated freeze / thaw cycles. |
| 存储溶液 | Preservative: 0.09% Sodium azide Constituents: PBS, 2% Sucrose |
| 纯度 | Immunogen affinity purified |
| 克隆 | 多克隆 |
| 同种型 | IgG |

应用

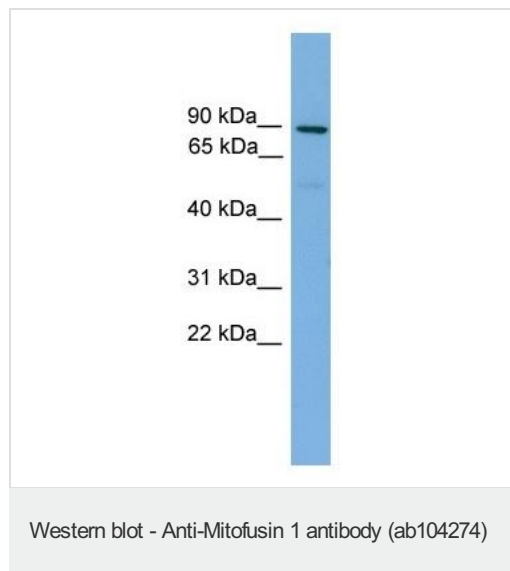
Our [Abpromise guarantee](#) covers the use of **ab104274** in the following tested applications.
The application notes include recommended starting dilutions; optimal dilutions/concentrations should be determined by the end user.

| 应用 | Ab评论 | 说明 |
|--------|-------|--|
| IP | | Use at an assay dependent concentration. |
| WB | ★★★★★ | Use a concentration of 1 µg/ml. Predicted molecular weight: 84 kDa. Good results were obtained when blocked with 5% non-fat dry milk in 0.05% PBS-T. |
| ICC/IF | | Use at an assay dependent concentration. |

靶标

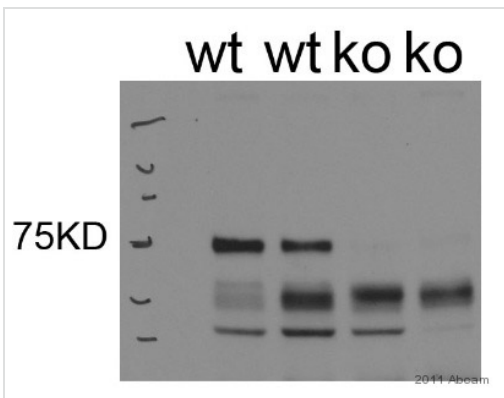
| | |
|--------------|--|
| 功能 | Essential transmembrane GTPase, which mediates mitochondrial fusion. Fusion of mitochondria occurs in many cell types and constitutes an important step in mitochondria morphology, which is balanced between fusion and fission. MFN1 acts independently of the cytoskeleton. Overexpression induces the formation of mitochondrial networks. |
| 组织特异性 | Ubiquitous. Expressed at slightly higher level in kidney and heart. Isoform 2 may be overexpressed in some tumors, such as lung cancers. |
| 序列相似性 | Belongs to the mitofusin family. |
| 翻译后修饰 | Ubiquitinated by MARCH5. |
| 细胞定位 | Cytoplasm and Mitochondrion outer membrane. |

图片



Anti-Mitofusin 1 antibody (ab104274) at 1 µg/ml + Human placenta lysate at 10 µg

Predicted band size: 84 kDa



Western blot - Anti-Mitofusin 1 antibody (ab104274)

This image is courtesy of an anonymous Abreview

All lanes : Anti-Mitofusin 1 antibody (ab104274) at 1/1000 dilution (+ 5% non-fat milk for 16 hours at 4°C)

Lanes 1-2 : Whole tissue lysate of mouse heart (wild type)

Lanes 3-4 : Whole tissue lysate of mouse heart (Knock-out)

Lysates/proteins at 20 µg per lane.

Secondary

All lanes : An HRP-conjugated Goat anti-rabbit IgG at 1/5000 dilution

Developed using the ECL technique.

Predicted band size: 84 kDa

Observed band size: 75 kDa

Exposure time: 1 minute

Blocking Step: 5% Milk for 1 hour at room temperature

Please note: All products are "FOR RESEARCH USE ONLY AND ARE NOT INTENDED FOR DIAGNOSTIC OR THERAPEUTIC USE"

Our Abpromise to you: Quality guaranteed and expert technical support

- Replacement or refund for products not performing as stated on the datasheet
- Valid for 12 months from date of delivery
- Response to your inquiry within 24 hours
- We provide support in Chinese, English, French, German, Japanese and Spanish
- Extensive multi-media technical resources to help you
- We investigate all quality concerns to ensure our products perform to the highest standards

If the product does not perform as described on this datasheet, we will offer a refund or replacement. For full details of the Abpromise, please visit <http://www.abcam.cn/abpromise> or contact our technical team.

Terms and conditions

- Guarantee only valid for products bought direct from Abcam or one of our authorized distributors