

Product datasheet

Anti-Mast Cell Chymase antibody [CC1] ab2377

★★★★☆ 3 Abreviews 18 References 2 图像

概述

产品名称	Anti-Mast Cell Chymase抗体[CC1]
描述	小鼠单克隆抗体[CC1] to Mast Cell Chymase
宿主	Mouse
特异性	Ab2377 recognises recombinant human mast cell chymase. However, endogenous protein is not detected in WB due to low expression, therefore we do not guarantee this antibody in WB.
经测试应用	适用于: IHC-P, IHC-Fr, Flow Cyt 不适用于: WB
种属反应性	与反应: Rat, Human, Pig
免疫原	Purified human skin Chymase.
阳性对照	Tonsil. IHC-P: FFPE human tonsil tissue sections.
常规说明	This antibody clone is manufactured by Abcam. If you require this antibody in a particular buffer formulation or a particular conjugate for your experiments, please contact orders@abcam.com or you can find further information here . Mast cells contain a number of preformed chemicals mediators such as histamine, chymase, carboxypeptidase and proteolytic tryptase. Human Mast Cell Chymase is considered to be an important marker of mast cells as well as an important mediator of inflammation.

性能

形式	Liquid
存放说明	Shipped at 4°C. Store at +4°C short term (1-2 weeks). Store at -20°C or -80°C. Avoid freeze / thaw cycle.
存储溶液	pH: 7.40 Preservative: 0.02% Sodium azide Constituents: PBS, 6.97% L-Arginine
纯度	Protein G purified
Primary antibody说明	Mast cells contain a number of preformed chemicals mediators such as histamine, chymase, carboxypeptidase and proteolytic tryptase. Human Mast Cell Chymase is considered to be an important marker of mast cells as well as an important mediator of inflammation.
克隆	单克隆
克隆编号	CC1

骨髓瘤	unknown
同种型	IgG1
轻链类型	unknown

应用

Our [Abpromise guarantee](#) covers the use of **ab2377** in the following tested applications.

The application notes include recommended starting dilutions; optimal dilutions/concentrations should be determined by the end user.

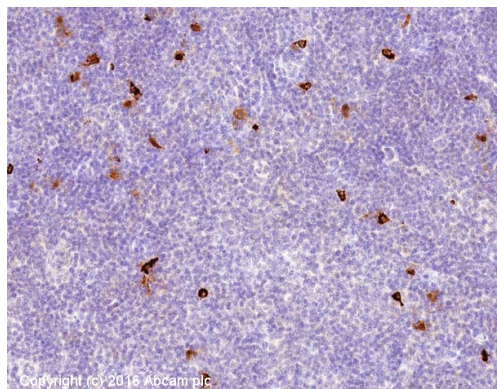
应用	Ab评论	说明
IHC-P	★★★★☆	Use a concentration of 0.2 µg/ml. Perform heat mediated antigen retrieval with citrate buffer pH 6 before commencing with IHC staining protocol.
IHC-Fr		Use at an assay dependent concentration. 1/100-1/200 in an ABC method.
Flow Cyt		Use 1-2µg for 10 ⁶ cells. ab170190 - Mouse monoclonal IgG1, is suitable for use as an isotype control with this antibody.

应用说明 Is unsuitable for WB.

靶标

功能	Major secreted protease of mast cells with suspected roles in vasoactive peptide generation, extracellular matrix degradation, and regulation of gland secretion.
组织特异性	Mast cells in lung, heart, skin and placenta. Expressed in both normal skin and in urticaria pigmentosa lesions.
序列相似性	Belongs to the peptidase S1 family. Granzyme subfamily. Contains 1 peptidase S1 domain.
细胞定位	Secreted. Cytoplasmic granule. Mast cell granules.

图片

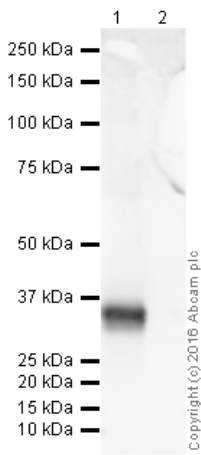


Immunohistochemistry (Formalin/PFA-fixed paraffin-embedded sections) - Anti-Mast Cell Chymase antibody [CC1] (ab2377)

IHC image of Mast Cell Chymase staining in human tonsil formalin fixed paraffin embedded tissue section*, performed on a Leica Bond™ system using the standard protocol F. The section was pre-treated using heat mediated antigen retrieval with sodium citrate buffer (pH6, epitope retrieval solution 1) for 20 mins. The section was then incubated with ab2377, 0.2µg/ml, for 15 mins at room temperature and detected using an HRP conjugated compact polymer system. DAB was used as the chromogen. The section was then counterstained with haematoxylin and mounted with DPX.

For other IHC staining systems (automated and non-automated) customers should optimize variable parameters such as antigen retrieval conditions, primary antibody concentration and antibody incubation times.

**Tissue obtained from the Human Research Tissue Bank, supported by the NIHR Cambridge Biomedical Research Centre*



Western blot - Anti-Mast Cell Chymase antibody
[CC1] (ab2377)

All lanes : Anti-Mast Cell Chymase antibody
[CC1] (ab2377) at 1 µg/ml

Lane 1 : Recombinant Human Chymase
Protein

Lane 2 : Recombinant Human Mast Cell
Tryptase protein (denatured) ([ab134529](#))

Lysates/proteins at 0.1 µg per lane.

Secondary

All lanes : Goat polyclonal to Mouse IgG -
H&L - Pre-Adsorbed (HRP) at 1/5000 dilution

Developed using the ECL technique.

Performed under reducing conditions.

Predicted band size: 27 kDa

Observed band size: 35 kDa

Exposure time: 30 seconds

Ab2377 recognises recombinant human mast cell chymase. However, endogenous protein is not detected in WB due to low expression, therefore we do not guarantee this antibody in WB.

Please note: All products are "FOR RESEARCH USE ONLY AND ARE NOT INTENDED FOR DIAGNOSTIC OR THERAPEUTIC USE"

Our Abpromise to you: Quality guaranteed and expert technical support

- Replacement or refund for products not performing as stated on the datasheet
- Valid for 12 months from date of delivery
- Response to your inquiry within 24 hours
- We provide support in Chinese, English, French, German, Japanese and Spanish

- Extensive multi-media technical resources to help you
- We investigate all quality concerns to ensure our products perform to the highest standards

If the product does not perform as described on this datasheet, we will offer a refund or replacement. For full details of the Abpromise, please visit <http://www.abcam.cn/abpromise> or contact our technical team.

Terms and conditions

- Guarantee only valid for products bought direct from Abcam or one of our authorized distributors