

Product datasheet

Anti-MYH antibody ab58572

1 图像

概述

产品名称	Anti-MYH抗体
描述	山羊多克隆抗体to MYH
特异性	This antibody is expected to recognise all reported isoforms (NP_036354.1; NP_001041636.1; NP_001041637.1; NP_001041638.1; NP_001041639.1).
经测试应用	适用于: WB, ELISA
种属反应性	与反应: Human
免疫原	Synthetic peptide: C-HISTDAHSLNSAAQ , corresponding to C terminal amino acids 533-546 of Human MYH Run BLAST with Run BLAST with
阳性对照	Human Bone Marrow lysate.

性能

形式	Liquid
存放说明	Shipped at 4°C. Upon delivery aliquot and store at -20°C. Avoid freeze / thaw cycles.
存储溶液	Preservative: 0.02% Sodium Azide Constituents: 0.5% BSA, 5mg/ml Tris, pH 7.3
纯度	Immunogen affinity purified
克隆	多克隆
同种型	IgG

应用

Our [Abpromise guarantee](#) covers the use of **ab58572** in the following tested applications.

The application notes include recommended starting dilutions; optimal dilutions/concentrations should be determined by the end user.

应用	Ab评论	说明
WB		
ELISA		

应用说明

Peptide ELISA: antibody detection limit dilution 1/16000.

WB: Use at a concentration of 0.1 - 0.3 µg/ml. Detects a band of approximately 61 kDa (predicted molecular weight: 61 kDa).

Not yet tested in other applications.

Optimal dilutions/concentrations should be determined by the end user.

靶标

功能

Involved in oxidative DNA damage repair. Initiates repair of A*oxoG to C*G by removing the inappropriately paired adenine base from the DNA backbone. Possesses both adenine and 2-OH-A DNA glycosylase activities.

疾病相关

Defects in MUTYH are a cause of familial adenomatous polyposis type 2 (FAP2) [MIM:608456]. A condition characterized by the development of multiple colorectal adenomatous polyps, benign neoplasms derived from glandular epithelium. Some affected individuals may develop colorectal carcinoma.

Defects in MUTYH are a cause of gastric cancer (GASC) [MIM:613659]. A malignant disease which starts in the stomach, can spread to the esophagus or the small intestine, and can extend through the stomach wall to nearby lymph nodes and organs. It also can metastasize to other parts of the body. The term gastric cancer or gastric carcinoma refers to adenocarcinoma of the stomach that accounts for most of all gastric malignant tumors. Two main histologic types are recognized, diffuse type and intestinal type carcinomas. Diffuse tumors are poorly differentiated infiltrating lesions resulting in thickening of the stomach. In contrast, intestinal tumors are usually exophytic, often ulcerating, and associated with intestinal metaplasia of the stomach, most often observed in sporadic disease.

序列相似性

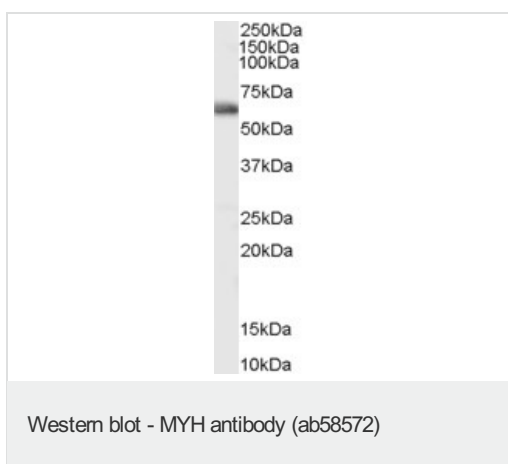
Belongs to the Nth/MutY family.

Contains 1 nudix hydrolase domain.

细胞定位

Nucleus.

Anti-MYH antibody 图像



Anti-MYH antibody (ab58572) at 0.1 µg/ml +
Human Bone Marrow lysate at 35 µg

Predicted band size : 61 kDa

Observed band size : 61 kDa

Please note: All products are "FOR RESEARCH USE ONLY AND ARE NOT INTENDED FOR DIAGNOSTIC OR THERAPEUTIC USE"

Our Promise to you: Quality guaranteed and expert technical support

- Replacement or refund for products not performing as stated on the datasheet

- Valid for 12 months from date of delivery
- Response to your inquiry within 24 hours

- We provide support in Chinese, English, French, German, Japanese and Spanish
- Extensive multi-media technical resources to help you
- We investigate all quality concerns to ensure our products perform to the highest standards

If the product does not perform as described on this datasheet, we will offer a refund or replacement. For full details of the Abpromise, please visit <http://www.abcam.cn/abpromise> or contact our technical team.

Terms and conditions

- Guarantee only valid for products bought direct from Abcam or one of our authorized distributors