

Product datasheet

Anti-MS4A4A antibody ab107543

2 图像

概述

产品名称	Anti-MS4A4A抗体
描述	兔多克隆抗体to MS4A4A
宿主	Rabbit
经测试应用	适用于: ICC/IF, WB
种属反应性	与反应: Human
免疫原	KLH conjugated synthetic peptide between amino acids 40-68 from the N terminal region of Human MS4A4A (NP_076926.2).
阳性对照	MDA-MB435 cell line lysate This antibody gave a positive result when used in the following formaldehyde fixed cell lines: U2OS.

性能

形式	Liquid
存放说明	Shipped at 4°C. Store at 4°C (up to 6 months). Store at -20°C long term.
存储溶液	Preservative: 0.09% Sodium Azide Constituents: PBS
纯度	Immunogen affinity purified
纯化说明	Purified through a protein A column, followed by peptide affinity purification.
克隆	多克隆
同种型	IgG

应用

Our [Abpromise guarantee](#) covers the use of **ab107543** in the following tested applications.

The application notes include recommended starting dilutions; optimal dilutions/concentrations should be determined by the end user.

应用	Ab评论	说明
ICC/IF		Use a concentration of 10 µg/ml.
WB		1/100 - 1/500. Predicted molecular weight: 25 kDa.

靶标

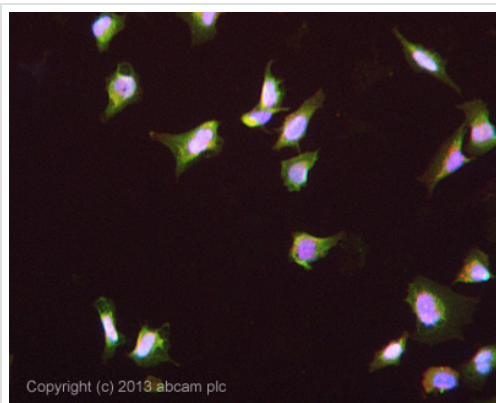
相关性

MS4A4A is a member of the membrane spanning 4A gene family. This nascent protein family are characterized by common structural features and similar intron/exon splice boundaries and display unique expression patterns among hematopoietic cells and non lymphoid tissues. MS4A4A may be involved in signal transduction as a component of a multimeric receptor complex. There are two named isoforms.

细胞定位

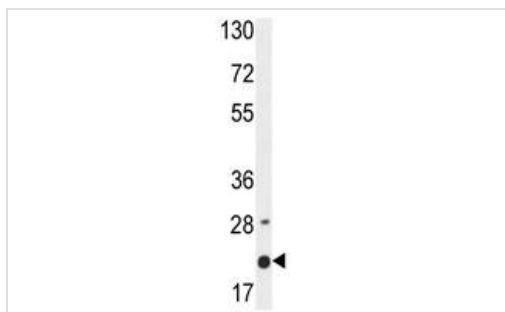
Cell Membrane; Multi pass membrane protein.

图片



Immunocytochemistry/ Immunofluorescence - Anti-MS4A4A antibody (ab107543)

ICC/IF image of ab107543 stained U2OS cells. The cells were 4% formaldehyde fixed (10 min) and then incubated in 1%BSA / 10% normal goat serum / 0.3M glycine in 0.1% PBS-Tween for 1h to permeabilise the cells and block non-specific protein-protein interactions. The cells were then incubated with the antibody ab107543 at 10µg/ml overnight at +4°C. The secondary antibody (green) was DyLight® 488 goat anti- rabbit (ab96899) IgG (H+L) used at a 1/250 dilution for 1h. Alexa Fluor® 594 WGA was used to label plasma membranes (red) at a 1/200 dilution for 1h. DAPI was used to stain the cell nuclei (blue) at a concentration of 1.43µM.



Western blot - Anti-MS4A4A antibody (ab107543)

Anti-MS4A4A antibody (ab107543) at 1/100 dilution + MDA-MB435 cell line lysate at 35 µg

Predicted band size: 25 kDa

Please note: All products are "FOR RESEARCH USE ONLY AND ARE NOT INTENDED FOR DIAGNOSTIC OR THERAPEUTIC USE"

Our Abpromise to you: Quality guaranteed and expert technical support

- Replacement or refund for products not performing as stated on the datasheet
- Valid for 12 months from date of delivery
- Response to your inquiry within 24 hours

- We provide support in Chinese, English, French, German, Japanese and Spanish
- Extensive multi-media technical resources to help you
- We investigate all quality concerns to ensure our products perform to the highest standards

If the product does not perform as described on this datasheet, we will offer a refund or replacement. For full details of the Abpromise, please visit <http://www.abcam.cn/abpromise> or contact our technical team.

Terms and conditions

- Guarantee only valid for products bought direct from Abcam or one of our authorized distributors