

Product datasheet

Anti-MRPL41 antibody ab121922

2 图像

概述

产品名称	Anti-MRPL41抗体
描述	兔多克隆抗体to MRPL41
经测试应用	适用于: IHC-P
种属反应性	与反应: Human
免疫原	antigen sequence: GADRM ^{SK} WTS KRGPR ^{SF} RGR KGRGAKGIGF LTSGWRFVQI KEMVPEFVVP DLTGF ^{KL} , corresponding to amino acids 14-70 of Human MRPL41 (Q8IXM3). Run BLAST with ExPASy Run BLAST with NCBI
阳性对照	Human liver tissue.

性能

形式	Liquid
存放说明	Shipped at 4°C. Upon delivery aliquot and store at -20°C. Avoid freeze / thaw cycles.
存储溶液	pH: 7.20 Preservative: 0.02% Sodium azide Constituents: 59% PBS, 40% Glycerol
纯度	Immunogen affinity purified
克隆	多克隆
同种型	IgG

应用

Our [Abpromise guarantee](#) covers the use of **ab121922** in the following tested applications.

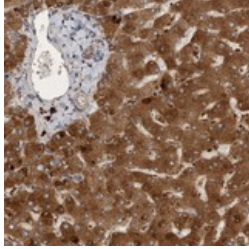
The application notes include recommended starting dilutions; optimal dilutions/concentrations should be determined by the end user.

应用	Ab评论	说明
IHC-P		1/20 - 1/50. Perform heat mediated antigen retrieval with citrate buffer pH 6 before commencing with IHC staining protocol.

靶标

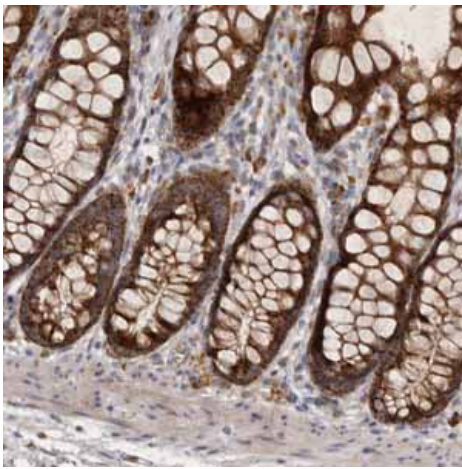
功能	Component of the mitochondrial ribosome large subunit. Also involved in apoptosis and cell cycle. Enhances p53/TP53 stability, thereby contributing to p53/TP53-induced apoptosis in response to growth-inhibitory condition. Enhances p53/TP53 translocation to the mitochondria. Has the ability to arrest the cell cycle at the G1 phase, possibly by stabilizing the CDKN1A and CDKN1B (p27Kip1) proteins.
组织特异性	Present in kidney, liver, thymus and testis, and at lower level in brain and spleen (at protein level).
序列相似性	Belongs to the ribosomal protein L41 family.
细胞定位	Mitochondrion.

Anti-MRPL41 antibody 图像



ab121922 at 1/20 dilution staining MRPL41 in paraffin-embedded Human liver tissue by Immunohistochemistry.

Immunohistochemistry (Formalin/PFA-fixed paraffin-embedded sections) - Anti-MRPL41 antibody (ab121922)



Immunohistochemical staining of Human rectum shows strong positivity in glandular cells using ab121922

Immunohistochemistry (Formalin/PFA-fixed paraffin-embedded sections)-Anti-MRPL41 antibody(ab121922)

Please note: All products are "FOR RESEARCH USE ONLY AND ARE NOT INTENDED FOR DIAGNOSTIC OR THERAPEUTIC USE"

Our Abpromise to you: Quality guaranteed and expert technical support

- Replacement or refund for products not performing as stated on the datasheet
- Valid for 12 months from date of delivery
- Response to your inquiry within 24 hours
- We provide support in Chinese, English, French, German, Japanese and Spanish

- Extensive multi-media technical resources to help you
- We investigate all quality concerns to ensure our products perform to the highest standards

If the product does not perform as described on this datasheet, we will offer a refund or replacement. For full details of the Abpromise, please visit <http://www.abcam.cn/abpromise> or contact our technical team.

Terms and conditions

- Guarantee only valid for products bought direct from Abcam or one of our authorized distributors