

Product datasheet

Anti-MIA3 antibody ab97881

1 References 2 图像

概述

产品名称	Anti-MIA3抗体
描述	兔多克隆抗体to MIA3
宿主	Rabbit
经测试应用	适用于: WB, ICC/IF
种属反应性	与反应: Human 预测可用于: Cow
免疫原	Recombinant protein fragment corresponding to a region within amino acids 1 and 120 of MIA3 (XP_496436).
阳性对照	A431, H1299, HeLa and HepG2 cell lines

性能

形式	Liquid
存放说明	Shipped at 4°C. Upon delivery aliquot and store at -20°C. Avoid repeated freeze / thaw cycles.
存储溶液	Preservative: 0.01% Thimerosal (merthiolate) Constituents: 40% Glycerol, 1X PBS, pH 7
纯度	Immunogen affinity purified
克隆	多克隆
同种型	IgG

应用

Our [Abpromise guarantee](#) covers the use of **ab97881** in the following tested applications.

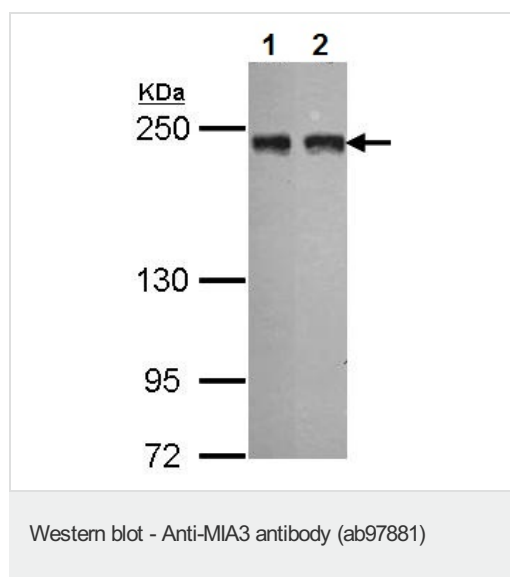
The application notes include recommended starting dilutions; optimal dilutions/concentrations should be determined by the end user.

应用	Ab评论	说明
WB		1/500 - 1/3000. Predicted molecular weight: 214 kDa.
ICC/IF		1/100 - 1/200.

靶标

功能	Required for collagen VII (COL7A1) secretion by loading COL7A1 into transport carriers. May participate in cargo loading of COL7A1 at endoplasmic reticulum exit sites by binding to COPII coat subunits Sec23/24 and guiding SH3-bound COL7A1 into a growing carrier. Does not play a role in global protein secretion and is apparently specific to COL7A1 cargo loading. However, it may participate in secretion of other proteins in cells that do not secrete COL7A1.
组织特异性	Broadly expressed, except in bone marrow and peripheral blood mononuclear cells. Down-regulated in melanoma tissue.
序列相似性	Belongs to the MIA/OTOR family. Tango1 subfamily. Contains 1 SH3 domain.
结构域	The proline-rich region (PRD) mediates the interaction with COPII coat subunits Sec23/24. Although 2 transmembrane domains are predicted, PubMed:19269366 showed that it only contains one transmembrane domain. The other predicted transmembrane region is probably a hairpin-type region embedded into the membrane, which does not cross the membrane. It is unclear which of the 2 predicted transmembrane regions is the transmembrane or the hairpin-type region.
细胞定位	Endoplasmic reticulum membrane. Localizes at endoplasmic reticulum exit sites. After loading of COL7A1 into transport carriers, it is not incorporated into COPII carriers and remains in the endoplasmic reticulum membrane.

图片



All lanes : Anti-MIA3 antibody (ab97881) at 1/1000 dilution

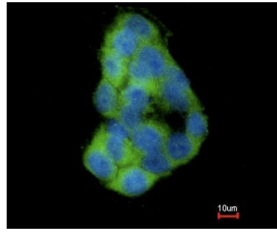
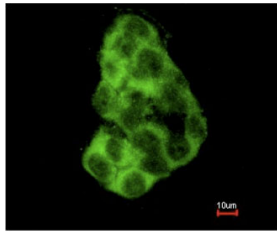
Lane 1 : A549 whole cell lysate

Lane 2 : Hep G2 whole cell lysate

Lysates/proteins at 30 µg per lane.

Predicted band size: 214 kDa

5% SDS PAGE.



Immunofluorescence analysis of methanol fixed HepG2 cells, using ab97881 at a 1/200 dilution.

Lower image: costained with Hoechst 33342.

Immunocytochemistry/ Immunofluorescence - MIA3 antibody (ab97881)

Please note: All products are "FOR RESEARCH USE ONLY AND ARE NOT INTENDED FOR DIAGNOSTIC OR THERAPEUTIC USE"

Our Abpromise to you: Quality guaranteed and expert technical support

- Replacement or refund for products not performing as stated on the datasheet
- Valid for 12 months from date of delivery
- Response to your inquiry within 24 hours
- We provide support in Chinese, English, French, German, Japanese and Spanish
- Extensive multi-media technical resources to help you
- We investigate all quality concerns to ensure our products perform to the highest standards

If the product does not perform as described on this datasheet, we will offer a refund or replacement. For full details of the Abpromise, please visit <http://www.abcam.cn/abpromise> or contact our technical team.

Terms and conditions

- Guarantee only valid for products bought direct from Abcam or one of our authorized distributors