


Product datasheet

Anti-METTL3 antibody ab98009

1 图像

概述

产品名称	Anti-METTL3抗体
描述	兔多克隆抗体to METTL3
宿主	Rabbit
经测试应用	适用于: WB
种属反应性	与反应: Human 预测可用于: Mouse, Rat, Rabbit, Goat, Horse, Chicken, Guinea pig, Cow, Cat, Dog, Saccharomyces cerevisiae, Drosophila melanogaster, Zebrafish 
免疫原	Synthetic peptide corresponding to Human METTL3 aa 503-552 (internal sequence). Sequence: IVA EVRSTSHKPDEIYGMIERLSPGTRKIELFGRPHNVQPNWITLGNQLD <a href="#">Run BLAST with</a> <a href="#">Run BLAST with</a>
阳性对照	Fetal brain lysate

性能

形式	Liquid
存放说明	Shipped at 4°C. Upon delivery aliquot and store at -20°C or -80°C. Avoid repeated freeze / thaw cycles.
存储溶液	Preservative: None Constituents: 2% Sucrose, PBS
纯度	Immunogen affinity purified
克隆	多克隆
同种型	IgG

应用

Our [Abpromise guarantee](#) covers the use of **ab98009** in the following tested applications.

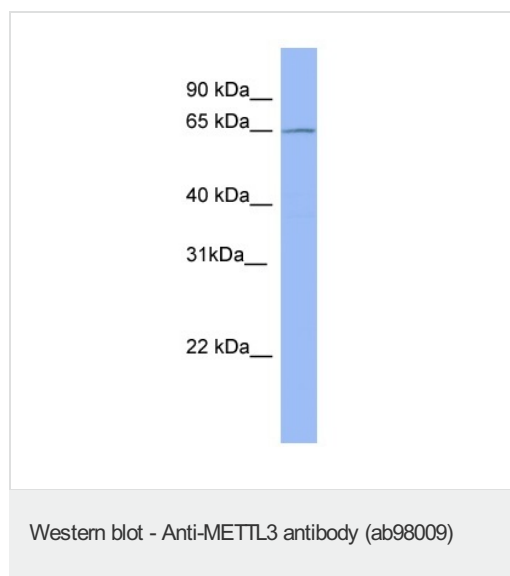
The application notes include recommended starting dilutions; optimal dilutions/concentrations should be determined by the end user.

应用	Ab评论	说明
WB		Use a concentration of 1 µg/ml. Predicted molecular weight: 64 kDa. Good results were obtained when blocked with 5% non-fat dry milk in 0.05% PBS-T.

## 靶标

功能	N6-methyltransferase that methylates adenosine residues of some mRNAs. N6-methyladenosine (m6A), which is present at internal sites of some mRNAs, may play a role in the efficiency of mRNA splicing, transport or translation.
组织特异性	Widely expressed at low level. Expressed in spleen, thymus, prostate, testis, ovary, small intestine, colon and peripheral blood leukocytes.
序列相似性	Belongs to the MT-A70-like family.
翻译后修饰	Phosphorylated upon DNA damage, probably by ATM or ATR.
细胞定位	Nucleus speckle. Colocalizes with speckles in interphase nuclei. Suggesting that it may be associated with nuclear pre-mRNA splicing components.

## 图片



Anti-METTL3 antibody (ab98009) at 1 µg/ml (in 5% skim milk / PBS buffer) + Human fetal brain lysate at 10 µg

### Secondary

HRP conjugated anti-Rabbit IgG at 1/50000 dilution

**Predicted band size:** 64 kDa

12% SDS PAGE

**Please note:** All products are "FOR RESEARCH USE ONLY AND ARE NOT INTENDED FOR DIAGNOSTIC OR THERAPEUTIC USE"

## Our Abpromise to you: Quality guaranteed and expert technical support

- Replacement or refund for products not performing as stated on the datasheet
- Valid for 12 months from date of delivery
- Response to your inquiry within 24 hours
- We provide support in Chinese, English, French, German, Japanese and Spanish

- Extensive multi-media technical resources to help you
- We investigate all quality concerns to ensure our products perform to the highest standards

If the product does not perform as described on this datasheet, we will offer a refund or replacement. For full details of the Abpromise, please visit <http://www.abcam.cn/abpromise> or contact our technical team.

### **Terms and conditions**

---

- Guarantee only valid for products bought direct from Abcam or one of our authorized distributors