

Product datasheet

Anti-MCP2 antibody ab83803

1 图像

概述

产品名称	Anti-MCP2抗体
描述	兔多克隆抗体to MCP2
经测试应用	适用于: WB, ELISA
种属反应性	与反应: Human
免疫原	Synthetic peptide corresponding to a region within internal sequence amino acids 50-99 (SYTRITNIQC PKEAVIFKTK RGKEVCADPK ERWVRDSMKH LDQIFQNLKP) of human MCP2 (NP_005614). Run BLAST with ExPASy Run BLAST with NCBI
阳性对照	Fetal heart lysate.

性能

形式	Liquid
存放说明	Shipped at 4°C. Upon delivery aliquot and store at -20°C. Avoid repeated freeze / thaw cycles.
存储溶液	Preservative: None Constituents: 2% Sucrose, PBS
纯度	Immunogen affinity purified
纯化说明	Purified by peptide affinity chromatography method.
克隆	多克隆
同种型	IgG

应用

Our [Abpromise guarantee](#) covers the use of **ab83803** in the following tested applications.

The application notes include recommended starting dilutions; optimal dilutions/concentrations should be determined by the end user.

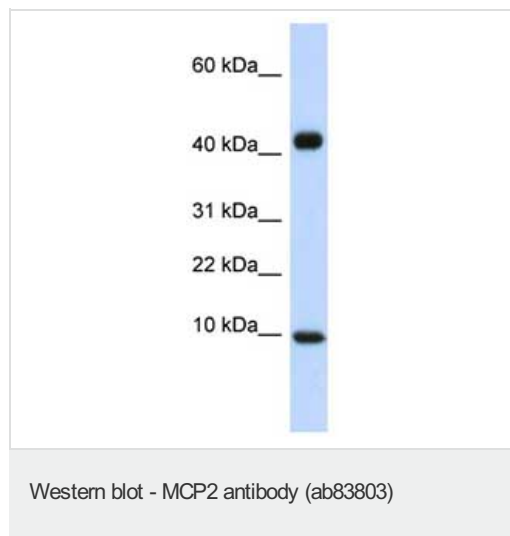
应用	Ab评论	说明
WB		Use a concentration of 1 µg/ml. Predicted molecular weight: 11 kDa. Good results were obtained when blocked with 5% non-fat dry milk in 0.05% PBS-T.

应用	Ab评论	说明
ELISA		Use at an assay dependent concentration. Titre using peptide based assay: 1/62500.

靶标

功能	Chemotactic factor that attracts monocytes, lymphocytes, basophils and eosinophils. May play a role in neoplasia and inflammatory host responses. This protein can bind heparin. The processed form MCP-2(6-76) does not show monocyte chemotactic activity, but inhibits the chemotactic effect most predominantly of CCL7, and also of CCL2 and CCL5 and CCL8.
组织特异性	Highest expression found in the small intestine and peripheral blood cells. Intermediate levels seen in the heart, placenta, lung, skeletal muscle, thymus, colon, ovary, spinal cord and pancreas. Low levels seen in the brain, liver, spleen and prostate.
序列相似性	Belongs to the intercrine beta (chemokine CC) family.
翻译后修饰	N-terminal processed form MCP-2(6-76) is produced by proteolytic cleavage after secretion from peripheral blood monocytes.
细胞定位	Secreted.

图片



Anti-MCP2 antibody (ab83803) at 1 µg/ml (in 5% skim milk / PBS buffer) + fetal heart lysate at 10 µg

Secondary

HRP conjugated anti-Rabbit IgG at 1/50000 dilution

Predicted band size : 11 kDa

Observed band size : 11 kDa

Additional bands at : 42 kDa. We are unsure as to the identity of these extra bands.

Please note: All products are "FOR RESEARCH USE ONLY AND ARE NOT INTENDED FOR DIAGNOSTIC OR THERAPEUTIC USE"

Our Abpromise to you: Quality guaranteed and expert technical support

- Replacement or refund for products not performing as stated on the datasheet
- Valid for 12 months from date of delivery
- Response to your inquiry within 24 hours

- We provide support in Chinese, English, French, German, Japanese and Spanish
- Extensive multi-media technical resources to help you
- We investigate all quality concerns to ensure our products perform to the highest standards

If the product does not perform as described on this datasheet, we will offer a refund or replacement. For full details of the Abpromise, please visit <http://www.abcam.cn/abpromise> or contact our technical team.

Terms and conditions

- Guarantee only valid for products bought direct from Abcam or one of our authorized distributors