

Product datasheet

Anti-MBD1 antibody ab124519

1 图像

概述

产品名称	Anti-MBD1抗体
描述	兔多克隆抗体to MBD1
宿主	Rabbit
经测试应用	适用于: WB
种属反应性	与反应: Mouse, Rat, Human
免疫原	Synthetic peptide surrounding amino acid 594 of Human MBD1.
阳性对照	Jurkat cell lysate
常规说明	The antibody solution should be gently mixed before use

性能

形式	Liquid
存放说明	Shipped at 4°C. Upon delivery aliquot and store at -20°C or -80°C. Avoid repeated freeze / thaw cycles.
存储溶液	pH: 7.20 Preservative: 0.01% Thimerosal (merthiolate) Constituents: 69% PBS, 0.15% EDTA, 30% Glycerol, 0.5% BSA
纯度	Protein A purified
克隆	多克隆
同种型	IgG

应用

Our [Abpromise guarantee](#) covers the use of **ab124519** in the following tested applications.

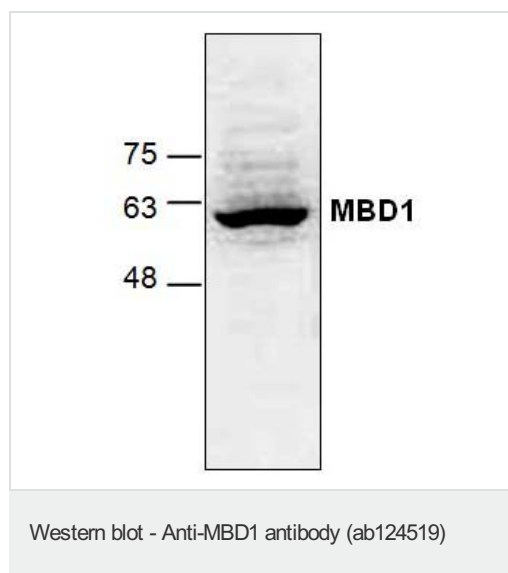
The application notes include recommended starting dilutions; optimal dilutions/concentrations should be determined by the end user.

应用	Ab评论	说明
WB		Use a concentration of 0.5 - 4 µg/ml. Predicted molecular weight: 67 kDa.

靶标

功能	Transcriptional repressor that binds CpG islands in promoters where the DNA is methylated at position 5 of cytosine within CpG dinucleotides. Binding is abolished by the presence of 7-mG that is produced by DNA damage by methylmethanesulfonate (MMS). Acts as transcriptional repressor and plays a role in gene silencing by recruiting AFT7IP, which in turn recruits factors such as the histone methyltransferase SETDB1. Probably forms a complex with SETDB1 and ATF7IP that represses transcription and couples DNA methylation and histone 'Lys-9' trimethylation. Isoform 1 and isoform 2 can also repress transcription from unmethylated promoters.
组织特异性	Widely expressed.
序列相似性	Contains 3 CXXC-type zinc fingers. Contains 1 MBD (methyl-CpG-binding) domain.
结构域	The methyl-CpG-binding domain (MBD) functions both in binding to methylated DNA and in protein interactions. The third CXXC-type zinc finger mediates binding to non-methylated CpG dinucleotides. The transcriptional repression domain (TRD) is involved in transcription repression and in protein interactions.
翻译后修饰	Sumoylated with SUMO1 by PIAS1 and PIAS3. Sumoylation affects transcriptional silencing by preventing the interaction with SETDB1. In contrast, sumoylation may increase interaction with AFT7IP. Phosphorylated upon DNA damage, probably by ATM or ATR.
细胞定位	Nucleus speckle. Chromosome. Nuclear, in a punctate pattern. Associated with euchromatic regions of the chromosomes, with pericentromeric regions on chromosome 1 and with telomeric regions from several chromosomes.

图片



Anti-MBD1 antibody (ab124519) at 4 μ g/ml +
Jurkat cell lysate

Predicted band size: 67 kDa

Please note: All products are "FOR RESEARCH USE ONLY AND ARE NOT INTENDED FOR DIAGNOSTIC OR THERAPEUTIC USE"

Our Abpromise to you: Quality guaranteed and expert technical support

- Replacement or refund for products not performing as stated on the datasheet
- Valid for 12 months from date of delivery
- Response to your inquiry within 24 hours

- We provide support in Chinese, English, French, German, Japanese and Spanish
- Extensive multi-media technical resources to help you
- We investigate all quality concerns to ensure our products perform to the highest standards

If the product does not perform as described on this datasheet, we will offer a refund or replacement. For full details of the Abpromise, please visit <http://www.abcam.cn/abpromise> or contact our technical team.

Terms and conditions

- Guarantee only valid for products bought direct from Abcam or one of our authorized distributors