

Product datasheet

Anti-MAP3K9 antibody - C-terminal ab71628

1 References 2 图像

概述

产品名称	Anti-MAP3K9抗体- C-terminal
描述	兔多克隆抗体to MAP3K9 - C-terminal
宿主	Rabbit
经测试应用	适用于: ELISA, IHC-P, WB
种属反应性	与反应: Mouse, Rat, Human
阳性对照	Human breast carcinoma tissue and rat testis tissue and A375 cell lysates.

性能

形式	Liquid
存放说明	Shipped at 4°C. Upon delivery aliquot and store at -20°C or -80°C. Avoid repeated freeze / thaw cycles.
存储溶液	Preservative: 0.09% Sodium Azide Constituents: PBS
纯度	Protein G purified
纯化说明	ab71628 is purified through a protein G column, eluted with high and low pH buffers and neutralized immediately, followed by dialysis against PBS.
克隆	多克隆
同种型	IgG

应用

Our [Abpromise guarantee](#) covers the use of **ab71628** in the following tested applications.

The application notes include recommended starting dilutions; optimal dilutions/concentrations should be determined by the end user.

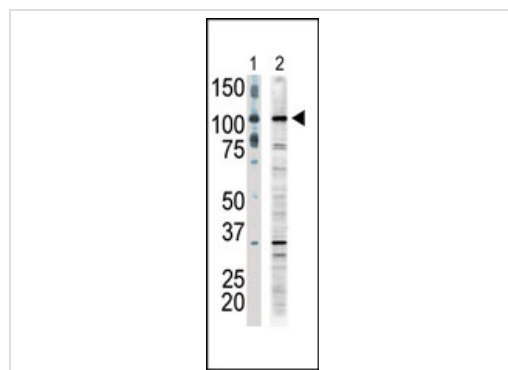
应用	Ab评论	说明
ELISA		1/1000.
IHC-P		1/50 - 1/100.
WB		1/100 - 1/500. Detects a band of approximately 100 kDa (predicted molecular weight: 118 kDa).

应用	Ab评论	说明
----	------	----

靶标

功能	Activates the JUN N-terminal pathway.
组织特异性	Expressed in epithelial tumor cell lines of colonic, breast and esophageal origin.
序列相似性	Belongs to the protein kinase superfamily. STE Ser/Thr protein kinase family. MAP kinase kinase kinase subfamily. Contains 1 protein kinase domain. Contains 1 SH3 domain.
翻译后修饰	Autophosphorylation on serine and threonine residues within the activation loop plays a role in enzyme activation. Thr-312 is likely to be the main autophosphorylation site.

图片



Western blot - MAP3K9 antibody - C-terminal (ab71628)

All lanes : Anti-MAP3K9 antibody - C-terminal (ab71628) at 1/100 dilution

Lane 1 : A375 cell lysate

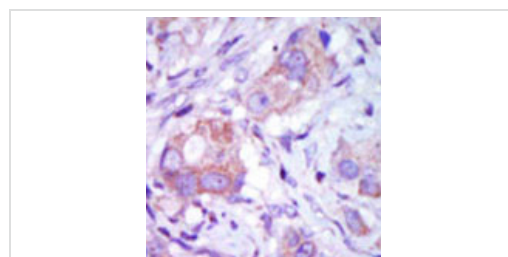
Lane 2 : rat testis tissue lysate

Lysates/proteins at 12.5 µg per lane.

Predicted band size: 118 kDa

Observed band size: 100 kDa

Additional bands at: 35 kDa. We are unsure as to the identity of these extra bands.



Immunohistochemistry (Formalin/PFA-fixed paraffin-embedded sections) - MAP3K9 antibody - C-terminal (ab71628)

ab71628 at 1/50 dilution, staining MAP3K9 in human breast carcinoma by Immunohistochemistry, Formalin-fixed, Paraffin-embedded tissue, followed by peroxidase-conjugated secondary antibody and DAB staining.

Our Abpromise to you: Quality guaranteed and expert technical support

- Replacement or refund for products not performing as stated on the datasheet
- Valid for 12 months from date of delivery
- Response to your inquiry within 24 hours

- We provide support in Chinese, English, French, German, Japanese and Spanish
- Extensive multi-media technical resources to help you
- We investigate all quality concerns to ensure our products perform to the highest standards

If the product does not perform as described on this datasheet, we will offer a refund or replacement. For full details of the Abpromise, please visit <http://www.abcam.cn/abpromise> or contact our technical team.

Terms and conditions

- Guarantee only valid for products bought direct from Abcam or one of our authorized distributors