


Product datasheet

Anti-MAML2 antibody ab90592

1 References 1 图像

概述

产品名称	Anti-MAML2抗体
描述	兔多克隆抗体to MAML2
宿主	Rabbit
经测试应用	适用于: IHC-P, ICC/IF
种属反应性	与反应: Human 预测可用于: Rabbit, Horse, Guinea pig, Cow, Dog, Chimpanzee, Ferret, Rhesus monkey, Gorilla, Orangutan 
免疫原	Synthetic peptide, corresponding to a region between residue 1100 and the C-terminus (residue 1153) of Human MAML2 (AAK93831.1).
阳性对照	Human Breast Carcinoma, Ovarian Carcinoma and Stomach Adenocarcinoma

性能

形式	Liquid
存放说明	Shipped at 4°C. Upon delivery aliquot and store at -20°C. Avoid freeze / thaw cycles.
存储溶液	Preservative: 0.09% Sodium Azide Constituents: 0.1% BSA, Tris buffered saline
纯度	Immunogen affinity purified
克隆	多克隆
同种型	IgG

应用

Our [Abpromise guarantee](#) covers the use of **ab90592** in the following tested applications.

The application notes include recommended starting dilutions; optimal dilutions/concentrations should be determined by the end user.

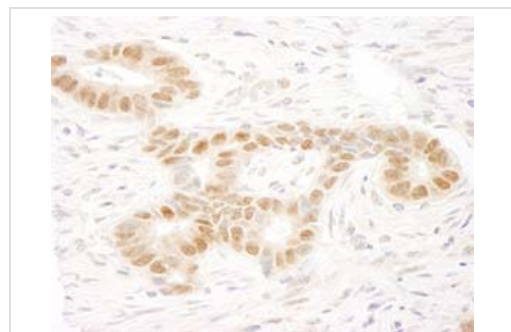
应用	Ab评论	说明
IHC-P		1/100 - 1/500. Epitope exposure is recommended. Epitope exposure with Tris-EDTA pH9.0 buffer will enhance staining.

应用	Ab评论	说明
ICC/IF		1/50. PubMed: 25229469

## 靶标

<b>功能</b>	Acts as a transcriptional coactivator for NOTCH proteins. Has been shown to amplify NOTCH-induced transcription of HES1. Potentiates activation by NOTCH3 and NOTCH4 more efficiently than MAML1 or MAML3.
<b>组织特异性</b>	Widely expressed with high levels detected in placenta, salivary gland and skeletal muscle.
<b>疾病相关</b>	Note=A chromosomal aberration involving MAML2 is found in mucoepidermoid carcinomas, benign Warthin tumors and clear cell hidradenomas. Translocation t(11;19)(q21;p13) with CRTC1/MECT1. The fusion protein consists of the N-terminus of CRTC1 joined to the C-terminus of MAML2. The reciprocal fusion protein consisting of the N-terminus of MAML2 joined to the C-terminus of CRTC1 has been detected in a small number of mucoepidermoid carcinomas.
<b>序列相似性</b>	Belongs to the mastermind family.
<b>结构域</b>	The C-terminal domain is required for transcriptional activation.
<b>细胞定位</b>	Nucleus speckle. Nuclear, in a punctate manner.

## 图片



ab90592, at 1/250 dilution, staining MAML2 in formalin-fixed, paraffin-embedded Human stomach carcinoma by Immunohistochemistry, using DAB detection.

Immunohistochemistry (Formalin/PFA-fixed paraffin-embedded sections) - Anti-MAML2 antibody (ab90592)

**Please note:** All products are "FOR RESEARCH USE ONLY AND ARE NOT INTENDED FOR DIAGNOSTIC OR THERAPEUTIC USE"

## Our Abpromise to you: Quality guaranteed and expert technical support

- Replacement or refund for products not performing as stated on the datasheet
- Valid for 12 months from date of delivery
- Response to your inquiry within 24 hours

- We provide support in Chinese, English, French, German, Japanese and Spanish
- Extensive multi-media technical resources to help you
- We investigate all quality concerns to ensure our products perform to the highest standards

If the product does not perform as described on this datasheet, we will offer a refund or replacement. For full details of the Abpromise, please visit <http://www.abcam.cn/abpromise> or contact our technical team.

### **Terms and conditions**

---

- Guarantee only valid for products bought direct from Abcam or one of our authorized distributors