

Product datasheet

Anti-Ly6c antibody [HK1.4] (Phycoerythrin) ab25572

★★★★★ 1 Abreviews 2 References 1 图像

概述

产品名称	Anti-Ly6c抗体[HK1.4] (Phycoerythrin)
描述	大鼠单克隆抗体[HK1.4] to Ly6c (Phycoerythrin)
宿主	Rat
偶联物	Phycoerythrin. Ex: 488nm, Em: 575nm
特异性	ab25572 recognises Ly6c.
经测试应用	适用于: Flow Cyt, IHC-Fr, Cellular Activation
种属反应性	与反应: Mouse
免疫原	The details of the immunogen for this antibody are not available.

性能

形式	Liquid
存放说明	Shipped at 4°C. Store at +4°C.
存储溶液	Preservative: 0.09% Sodium Azide Constituents: 16% Sucrose, PBS and stabilizing agent.
纯度	Affinity purified
克隆	单克隆
克隆编号	HK1.4
同种型	IgG2c
轻链类型	kappa

应用

Our [Abpromise guarantee](#) covers the use of **ab25572** in the following tested applications.

The application notes include recommended starting dilutions; optimal dilutions/concentrations should be determined by the end user.

应用	Ab评论	说明
----	------	----

应用	Ab评论	说明
Flow Cyt	★★★★★	Use 0.2µg for 10 <sup>6</sup> cells. <a href="#">ab154450</a> - Rat monoclonal IgG2c, is suitable for use as an isotype control with this antibody.
IHC-Fr		Use at an assay dependent concentration.
Cellular Activation		Use at an assay dependent concentration. <i>In vitro</i> activation of T lymphocytes.

## 靶标

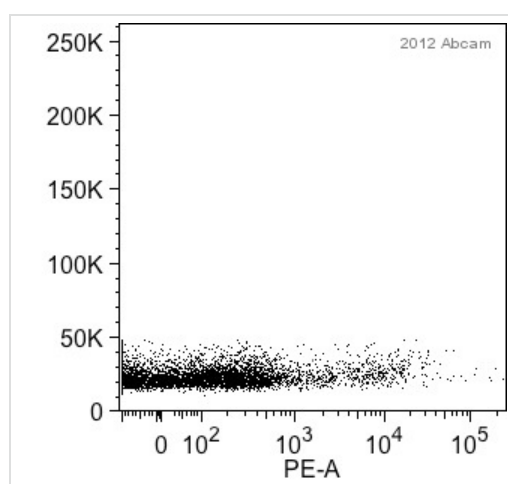
## 相关性

Ly6C is a monocyte/macrophage and endothelial cell differentiation antigen regulated by interferon gamma, and may play a role in the development and maturation of lymphocytes. It is a member of the Ly6 multigene family of type V glycosphosphatidylinositol anchored cell surface proteins. It is expressed on bone marrow cells, monocytes/macrophages, neutrophils, endothelial cells, and T cell subsets. Mice with the Ly6.2 allotype (e.g., AKR, C57BL, C57BR, C57L, DBA/2, PL, SJL, SWR, 129) have subsets of CD4+Ly6C+ and CD8+Ly6C+ cells, while Ly6.1 strains (e.g., A, BALB/c, CBA, C3H/He, DBA/1, NZB) have only CD8+Ly6C+ lymphocytes.

## 细胞定位

Cell membrane; Lipid-anchor, GPI-anchor.

## 图片



Flow cytometry analysis of murine splenocytes, staining Ly6c with ab25572.

Cells were cultured in Cells were isolated via mechanical disruption of the spleen. The sample was incubated with the primary antibody (1/100 in 2% FCS + 0.5 mM EDTA in PBS) for 30 minutes at 4°C.

**Gating Strategy:** lymphocytes

Flow Cytometry - Anti-Ly6c antibody [HK1.4]

(Phycoerythrin) (ab25572)

This image is courtesy of an anonymous Abreview

**Please note:** All products are "FOR RESEARCH USE ONLY AND ARE NOT INTENDED FOR DIAGNOSTIC OR THERAPEUTIC USE"

## Our Abpromise to you: Quality guaranteed and expert technical support

- Replacement or refund for products not performing as stated on the datasheet

- Valid for 12 months from date of delivery
- Response to your inquiry within 24 hours
  
- We provide support in Chinese, English, French, German, Japanese and Spanish
- Extensive multi-media technical resources to help you
- We investigate all quality concerns to ensure our products perform to the highest standards

If the product does not perform as described on this datasheet, we will offer a refund or replacement. For full details of the Abpromise, please visit <http://www.abcam.cn/abpromise> or contact our technical team.

## **Terms and conditions**

---

- Guarantee only valid for products bought direct from Abcam or one of our authorized distributors