


Product datasheet

Anti-Laminin beta 1 antibody ab69633

1 References 3 图像

概述

产品名称	Anti-Laminin beta 1 抗体
描述	兔多克隆抗体 to Laminin beta 1
经测试应用	适用于: WB, ELISA, IHC-P, ICC/IF
种属反应性	与反应: Human 预测可用于: Mouse 
免疫原	Synthesized peptide derived from the C-terminus of human Laminin beta 1.
阳性对照	Hela cells, human liver carcinoma tissue and extracts from HepG2

性能

形式	Liquid
存放说明	Shipped at 4°C. Upon delivery aliquot and store at -20°C. Avoid freeze / thaw cycles.
存储溶液	Preservative: 0.02% Sodium Azide Constituents: 50% Glycerol, PBS (without Mg ²⁺ and Ca ²⁺), 150mM Sodium chloride, pH 7.4
纯度	Immunogen affinity purified
克隆	多克隆
同种型	IgG

应用

Our [Abpromise guarantee](#) covers the use of **ab69633** in the following tested applications.

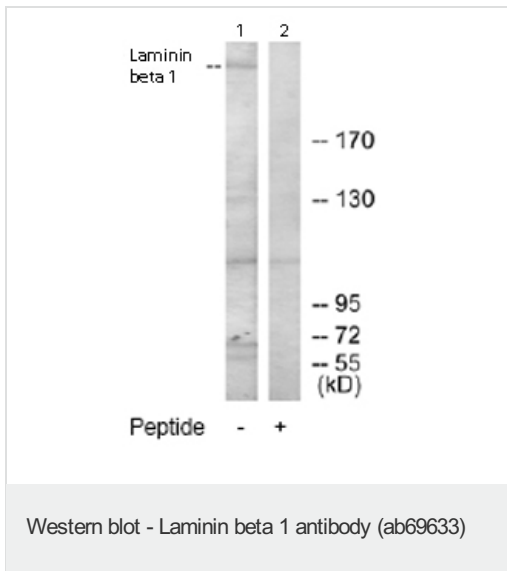
The application notes include recommended starting dilutions; optimal dilutions/concentrations should be determined by the end user.

应用	Ab评论	说明
WB		1/500 - 1/1000. Detects a band of approximately 60, 67, 110, 130, >170 kDa (predicted molecular weight: 198 kDa).
ELISA		1/10000.
IHC-P		1/50 - 1/100.
ICC/IF		1/500 - 1/1000.

靶标

功能	Binding to cells via a high affinity receptor, laminin is thought to mediate the attachment, migration and organization of cells into tissues during embryonic development by interacting with other extracellular matrix components.
序列相似性	Contains 13 laminin EGF-like domains. Contains 1 laminin IV type B domain. Contains 1 laminin N-terminal domain.
结构域	The alpha-helical domains I and II are thought to interact with other laminin chains to form a coiled coil structure. Domains VI and IV are globular.
细胞定位	Secreted > extracellular space > extracellular matrix > basement membrane. Major component.

Anti-Laminin beta 1 antibody 图像



All lanes : Anti-Laminin beta 1 antibody (ab69633) at 1/500 dilution

Lane 1 : Extracts from HepG2 cells

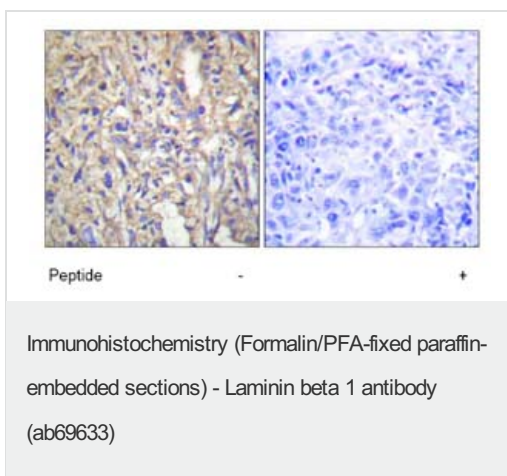
Lane 2 : Extracts from HepG2 cells with immunising peptide at 5 µg

Lysates/proteins at 5 µg per lane.

Predicted band size : 198 kDa

Observed band size : >170 kDa

Additional bands at : 110 kDa, 130 kDa, 60 kDa, 67 kDa. We are unsure as to the identity of these extra bands.



Immunohistochemistry analysis of paraffin-embedded human liver carcinoma tissue using ab69633 at 1:50 dilution.

Left image un-treated.

Right image treated with immunizing peptide.



Immunofluorescence analysis of HeLa cells using ab69633 at a 1:500 dilution.
Left image un-treated.
Right image treated with immunizing peptide.

Please note: All products are "FOR RESEARCH USE ONLY AND ARE NOT INTENDED FOR DIAGNOSTIC OR THERAPEUTIC USE"

Our Abpromise to you: Quality guaranteed and expert technical support

- Replacement or refund for products not performing as stated on the datasheet
- Valid for 12 months from date of delivery
- Response to your inquiry within 24 hours
- We provide support in Chinese, English, French, German, Japanese and Spanish
- Extensive multi-media technical resources to help you
- We investigate all quality concerns to ensure our products perform to the highest standards

If the product does not perform as described on this datasheet, we will offer a refund or replacement. For full details of the Abpromise, please visit <http://www.abcam.cn/abpromise> or contact our technical team.

Terms and conditions

- Guarantee only valid for products bought direct from Abcam or one of our authorized distributors