

Product datasheet

Anti-Lambda Light chain antibody (HRP) ab9007

★★★★★ 2 Abreviews 1 图像

概述

产品名称	Anti-Lambda Light chain抗体(HRP)
描述	羊多克隆抗体to Lambda Light chain (HRP)
偶联物	HRP
特异性	The unconjugated immunoglobulin gives a single arc when tested by IEP against human serum. Identity has been confirmed by double diffusion (Ouchterlony) against human serum and an anti-HumanLambda of known specificity.
经测试应用	适用于: IHC-Fr, ELISA, WB
种属反应性	与反应: Human
免疫原	The immunogen used was human lambda-chain, purified from disease state urines and shown to be homogeneous by SDS-PAGE.
常规说明	The following points should be observed when using this product: 1) Dilutions of the conjugate must be made in a suitable buffer (e.g. 0.15M Phosphate buffered saline,pH7.2) 2) It is recommended that dilutions of the conjugate are made in polypropylene or polyethylene containers. Other materials (e.g. polystyrene, some grades of glass) may be detrimental to the conjugate. 3) Working dilutions of the conjugate should be prepared immediately prior to use. 4) Peroxidase conjugates are adversely affected by the presence of sodium azide, the use of which shouldtherefore be avoided. 5) The addition of Tween 20 (0.05 – 0.1%) to the conjugate diluent buffer is recommended to prevent nonspecificbinding in EIA. It may also be advantageous in other assay systems.

性能

形式	Liquid
存放说明	Shipped at 4°C. Store at +4°C.
存储溶液	pH: 7.20 Preservative: 0.05% Proclin Constituents: 1% BSA, PBS, 10% Stabilzyme
纯度	IgG fraction
克隆	多克隆
同种型	IgG
轻链类型	unknown

应用

Our [Abpromise guarantee](#) covers the use of **ab9007** in the following tested applications.

The application notes include recommended starting dilutions; optimal dilutions/concentrations should be determined by the end user.

应用	Ab评论	说明
IHC-Fr		1/25 - 1/50.
ELISA	★★★★★	Use at an assay dependent dilution. To give an A450nm = 1.0 using wells coated with human serum at 1/2000 dilution and TMB as a substrate: 1/6400 – 1/12800
WB	★★★★★	Use at an assay dependent dilution. See Abreview

靶标

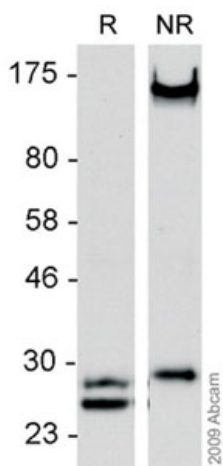
相关性

All five immunoglobulin classes share the same basic four polypeptide chain structure of two heavy-chains and two light chains. There are five heavy chain types, and two light-chain types (Kappa and Lambda) both having a molecular weight of 22.5kDa. Any heavy-chain type can associate with either light-chain type, but on any immunoglobulin molecule both light-chains are of the same type. Kappa and Lambda consist of a variable region and a constant region and can easily be differentiated by the antigenic properties of the constant region. The ratio of Kappa to Lambda is 70:30, the vast majority of which is bound to heavy-chain in immunoglobulin. In normal individuals low levels of free light-chain are present in serum (kappa, 1.6-15.2 mg/L; Lambda, 0.4-4.2mg/L), with the occurrence of multiple myeloma or other B-cell malignancies these levels can be greatly elevated and can be found at high levels in the urine (Bence-Jones proteins).

细胞定位

Cytoplasmic

图片



Western blot - Lambda Light chain antibody (HRP)
(ab9007)

All lanes : Anti-Lambda Light chain antibody
(HRP) (ab9007) at 1/500 dilution

Lane 1 : Reduced samples (Conditioned
medium from HEK293 expressing
recombinant Lambda light chain).

Lane 2 : Non-reduced samples (Conditioned
medium from HEK293 expressing
recombinant Lambda light chain).

Observed band size : 25,170 kDa

Additional bands at : 30 kDa (possible non-
specific binding).

*This image is courtesy of an anonymous
Abreview*

Please note: All products are "FOR RESEARCH USE ONLY AND ARE NOT INTENDED FOR DIAGNOSTIC OR THERAPEUTIC USE"

Our Abpromise to you: Quality guaranteed and expert technical support

- Replacement or refund for products not performing as stated on the datasheet
- Valid for 12 months from date of delivery
- Response to your inquiry within 24 hours
- We provide support in Chinese, English, French, German, Japanese and Spanish
- Extensive multi-media technical resources to help you
- We investigate all quality concerns to ensure our products perform to the highest standards

If the product does not perform as described on this datasheet, we will offer a refund or replacement. For full details of the Abpromise, please visit <http://www.abcam.cn/abpromise> or contact our technical team.

Terms and conditions

- Guarantee only valid for products bought direct from Abcam or one of our authorized distributors