


Product datasheet

Anti-LRWD1 antibody ab107779

★★★★☆ 1 Abreviews 1 图像

概述

产品名称	Anti-LRWD1抗体
描述	兔多克隆抗体to LRWD1
宿主	Rabbit
经测试应用	适用于: WB
种属反应性	与反应: Human 预测可用于: Rabbit, Horse, Dog, Pig, Chimpanzee, Macaque monkey, Gorilla, Orangutan 
免疫原	Synthetic peptide conjugated to KLH derived from within residues 1 - 100 of Human LRWD1.参阅Abcam的专有抗源政策
阳性对照	This antibody gave a positive signal in Human testis tissue lysate.

性能

形式	Liquid
存放说明	Shipped at 4°C. Store at +4°C short term (1-2 weeks). Upon delivery aliquot. Store at -20°C or -80°C. Avoid freeze / thaw cycle.
存储溶液	pH: 7.40 Preservative: 0.02% Sodium azide Constituent: PBS Note: Batches of this product that have a concentration < 1mg/ml may have BSA added as a stabilising agent. If you would like information about the formulation of a specific lot, please contact our scientific support team who will be happy to help.
纯度	Immunogen affinity purified
克隆	多克隆
同种型	IgG

应用

Our [Abpromise guarantee](#) covers the use of **ab107779** in the following tested applications.

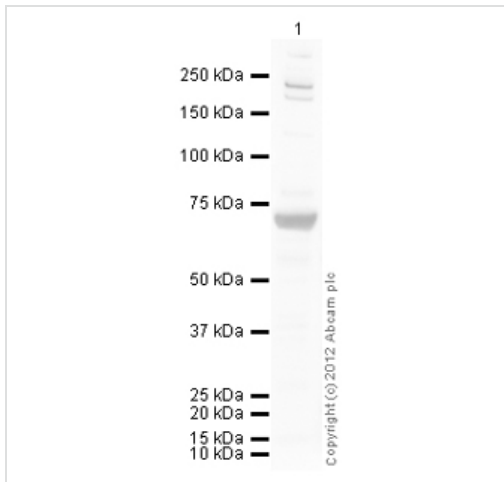
The application notes include recommended starting dilutions; optimal dilutions/concentrations should be determined by the end user.

应用	Ab评论	说明
WB		Use a concentration of 1 µg/ml. Detects a band of approximately 71 kDa (predicted molecular weight: 71 kDa).

靶标

功能	Associated component of the origin recognition complex (ORC) required to recruit and stabilize the ORC complex to chromatin. Probably required for the association of ORC on chromatin during G1 to establish pre-replication complex (preRC) and to heterochromatic sites in post-replicated cells. Binds a combination of DNA and histone methylation repressive marks on heterochromatin: binds histone H3 and H4 trimethylation marks H3K9me3, H3K27me3 and H4K20me3 in a cooperative manner with DNA methylation. It is unclear whether it recognizes and binds these repressive marks by itself or needs additional factors.
序列相似性	Belongs to the LRWD1 family. Contains 3 LRR (leucine-rich) repeats. Contains 5 WD repeats.
结构域	The WD repeats are required for the interaction with ORC components.
翻译后修饰	Phosphorylated upon DNA damage, probably by ATM or ATR.
细胞定位	Nucleus. Chromosome > centromere. Chromosome > telomere. Localizes to heterochromatin during G1 phase. Restricted to centromeres or telomeres as cells progress through S phase. When cells enter mitosis, relocates to centromeres.

图片



Western blot - Anti-LRWD1 antibody (ab107779)

Anti-LRWD1 antibody (ab107779) at 1 µg/ml
+ Human testis tissue lysate - total protein
(ab30257) at 10 µg

Secondary

Goat Anti-Rabbit IgG H&L (HRP) preadsorbed
(ab97080) at 1/5000 dilution

Developed using the ECL technique.

Performed under reducing conditions.

Predicted band size: 71 kDa

Observed band size: 71 kDa

Additional bands at: 190 kDa, 235 kDa. We are unsure as to the identity of these extra bands.

Exposure time: 30 seconds

Please note: All products are "FOR RESEARCH USE ONLY AND ARE NOT INTENDED FOR DIAGNOSTIC OR THERAPEUTIC USE"

Our Abpromise to you: Quality guaranteed and expert technical support

- Replacement or refund for products not performing as stated on the datasheet
- Valid for 12 months from date of delivery
- Response to your inquiry within 24 hours
- We provide support in Chinese, English, French, German, Japanese and Spanish
- Extensive multi-media technical resources to help you
- We investigate all quality concerns to ensure our products perform to the highest standards

If the product does not perform as described on this datasheet, we will offer a refund or replacement. For full details of the Abpromise, please visit <http://www.abcam.cn/abpromise> or contact our technical team.

Terms and conditions

- Guarantee only valid for products bought direct from Abcam or one of our authorized distributors