

Product datasheet

Anti-LOX 1 antibody ab65864

1 References 2 图像

概述

产品名称	Anti-LOX 1抗体
描述	兔多克隆抗体to LOX 1
宿主	Rabbit
经测试应用	适用于: WB, ICC/IF
种属反应性	与反应: Human
免疫原	Synthetic peptide conjugated to KLH derived from within residues 1 - 100 of Human LOX 1.参阅 Abcam的专有抗源政策(Peptide available as ab69660 .)
阳性对照	This antibody gave a positive signal in the following tissue lysates: Brain (Human) Spinal Cord (Human) IF/ICC: JEG-3 cell line.

性能

形式	Liquid
存放说明	Shipped at 4°C. Store at +4°C short term (1-2 weeks). Upon delivery aliquot. Store at -20°C or -80°C. Avoid freeze / thaw cycle.
存储溶液	Preservative: 0.02% Sodium Azide Constituents: 1% BSA, PBS, pH 7.4
纯度	Immunogen affinity purified
克隆	多克隆
同种型	IgG

应用

Our [Abpromise guarantee](#) covers the use of **ab65864** in the following tested applications.

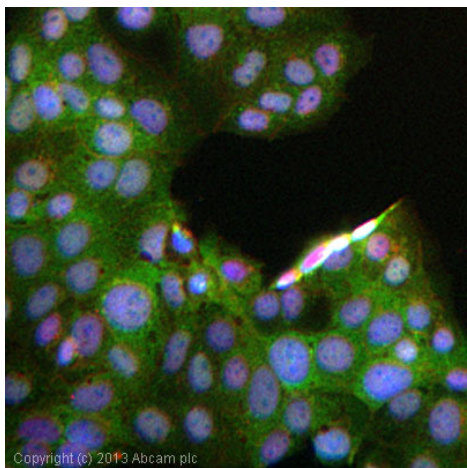
The application notes include recommended starting dilutions; optimal dilutions/concentrations should be determined by the end user.

应用	Ab评论	说明
WB		Use a concentration of 1 µg/ml. Detects a band of approximately 31 kDa (predicted molecular weight: 31 kDa).
ICC/IF		Use a concentration of 5 µg/ml.

靶标

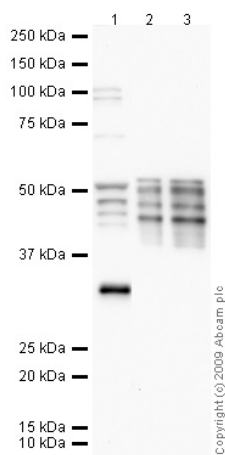
功能	Receptor that mediates the recognition, internalization and degradation of oxidatively modified low density lipoprotein (oxLDL) by vascular endothelial cells. OxLDL is a marker of atherosclerosis that induces vascular endothelial cell activation and dysfunction, resulting in pro-inflammatory responses, pro-oxidative conditions and apoptosis. Its association with oxLDL induces the activation of NF-kappa-B through an increased production of intracellular reactive oxygen and a variety of pro-atherogenic cellular responses including a reduction of nitric oxide (NO) release, monocyte adhesion and apoptosis. In addition to binding oxLDL, it acts as a receptor for the HSP70 protein involved in antigen cross-presentation to naive T-cells in dendritic cells, thereby participating in cell-mediated antigen cross-presentation. Also involved in inflammatory process, by acting as a leukocyte-adhesion molecule at the vascular interface in endotoxin-induced inflammation. Also acts as a receptor for advanced glycation end (AGE) products, activated platelets, monocytes, apoptotic cells and both Gram-negative and Gram-positive bacteria.
组织特异性	Expressed at high level in endothelial cells and vascular-rich organs such as placenta, lung, liver and brain, aortic intima, bone marrow, spinal cord and substantia nigra. Also expressed at the surface of dendritic cells. Widely expressed at intermediate and low level.
疾病相关	Note=Independent association genetic studies have implicated OLR1 gene variants in myocardial infarction susceptibility. Note=OLR1 may be involved in Alzheimer disease (AD). Involvement in AD is however unclear: according to some authors (PubMed:12354387, PubMed:12810610 and PubMed:15976314), variations in OLR1 modify the risk of AD, while according to other (PubMed:15000751 and PubMed:15060104) they do not.
序列相似性	Contains 1 C-type lectin domain.
结构域	The cytoplasmic region is required for subcellular sorting on the cell surface. The C-type lectin domain mediates the recognition and binding of oxLDL.
翻译后修饰	The intrachain disulfide-bonds prevent N-glycosylation at some sites. N-glycosylated.
细胞定位	Cell membrane. Secreted. A secreted form also exists.

图片



Immunocytochemistry/ Immunofluorescence - Anti-
LOX 1 antibody (ab65864)

ICC/IF image of ab65864 stained JEG-3 cells. The cells were 4% formaldehyde fixed (10 min) and then incubated in 1%BSA / 10% normal goat serum / 0.3M glycine in 0.1% PBS-Tween for 1h to permeabilise the cells and block non-specific protein-protein interactions. The cells were then incubated with the antibody (ab65864, 5µg/ml) overnight at +4°C. The secondary antibody (green) was ab96899, DyLight® 488 goat anti-rabbit IgG (H+L) used at a 1/250 dilution for 1h. Alexa Fluor® 594 WGA was used to label plasma membranes (red) at a 1/200 dilution for 1h. DAPI was used to stain the cell nuclei (blue) at a concentration of 1.43µM.



Western blot - Anti-LOX 1 antibody (ab65864)

All lanes : Anti-LOX 1 antibody (ab65864) at 1 µg/ml

Lane 1 : Human brain tissue lysate - total protein (ab29466) at 10 µg

Lane 2 : Human spinal cord tissue lysate - total protein (ab29188) at 5 µg

Lane 3 : Human spinal cord tissue lysate - total protein (ab29188) at 10 µg

Secondary

All lanes : Goat polyclonal to Rabbit IgG - H&L - Pre-Adsorbed (HRP) at 1/3000 dilution

Performed under reducing conditions.

Predicted band size: 31 kDa

Observed band size: 31 kDa

Additional bands at: 42 kDa (possible isoform), 42 kDa (possible glycosylated form), 51 kDa (possible isoform), 51 kDa (possible glycosylated form)

Exposure time: 1 minute

LOX1 contains a number of potentially glycosylated isoforms (SwissProt) which may explain its migration at a higher molecular weight than predicted.

Please note: All products are "FOR RESEARCH USE ONLY AND ARE NOT INTENDED FOR DIAGNOSTIC OR THERAPEUTIC USE"

Our Abpromise to you: Quality guaranteed and expert technical support

- Replacement or refund for products not performing as stated on the datasheet
- Valid for 12 months from date of delivery
- Response to your inquiry within 24 hours
- We provide support in Chinese, English, French, German, Japanese and Spanish
- Extensive multi-media technical resources to help you
- We investigate all quality concerns to ensure our products perform to the highest standards

If the product does not perform as described on this datasheet, we will offer a refund or replacement. For full details of the Abpromise,

please visit <http://www.abcam.cn/abpromise> or contact our technical team.

Terms and conditions

- Guarantee only valid for products bought direct from Abcam or one of our authorized distributors