

## Product datasheet

# Anti-LKB1 antibody [Ley 37D/G6] ab15095

敲除 验证

★★★★☆ 12 Abreviews 26 References 3 图像

### 概述

产品名称	Anti-LKB1抗体[Ley 37D/G6]
描述	小鼠单克隆抗体[Ley 37D/G6] to LKB1
宿主	Mouse
特异性	This antibody detects a single clean band representing LKB1/STK11 in Western blots on cells expressing LKB1.
经测试应用	适用于: WB
种属反应性	与反应: Mouse, Human
免疫原	Recombinant full length protein corresponding to LKB1.
阳性对照	Adenocarcinoma H441 cell line, Lung carcinoma cell line H1299

### 性能

形式	Liquid
存放说明	Shipped at 4°C. Store at +4°C short term (1-2 weeks). Upon delivery aliquot. Store at -20°C or -80°C. Avoid freeze / thaw cycle.
存储溶液	Preservative: 0.05% Sodium Azide
克隆	单克隆
克隆编号	Ley 37D/G6
同种型	IgG2b

### 应用

Our [Abpromise guarantee](#) covers the use of **ab15095** in the following tested applications.

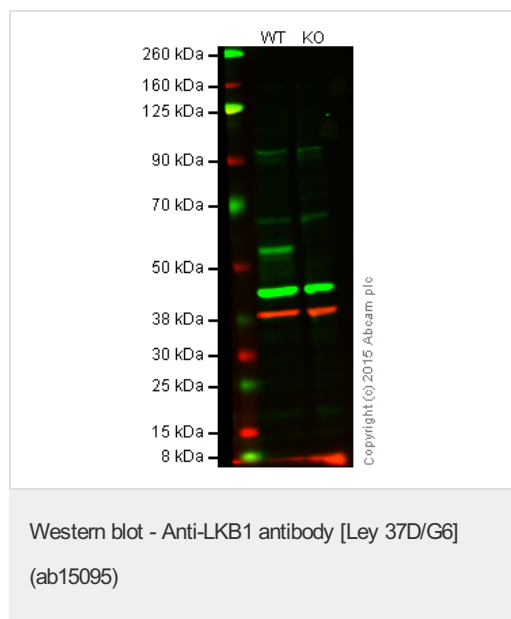
The application notes include recommended starting dilutions; optimal dilutions/concentrations should be determined by the end user.

应用	Ab评论	说明
WB	★★★★☆	1/100. Detects a band of approximately 50 kDa (predicted molecular weight: 48.6 kDa).

## 靶标

<b>功能</b>	Essential role in G1 cell cycle arrest. Phosphorylates and activates members of the AMPK-related subfamily of protein kinases. Tumor suppressor.
<b>组织特异性</b>	Ubiquitously expressed. Strongest expression in testis and fetal liver.
<b>疾病相关</b>	<p>Defects in STK11 are a cause of Peutz-Jeghers syndrome (PJS) [MIM:175200]. PJS is a rare hereditary disease in which there is predisposition to benign and malignant tumors of many organ systems. PJS is an autosomal dominant disorder characterized by melanocytic macules of the lips, multiple gastrointestinal hamartomatous polyps and an increased risk for various neoplasms, including gastrointestinal cancer.</p> <p>Defects in STK11 have been associated with testicular tumors (TEST) [MIM:273300]. A common solid malignancy in males. Germ cell tumors of the testis constitute 95% of all testicular neoplasms.</p>
<b>序列相似性</b>	Belongs to the protein kinase superfamily. CAMK Ser/Thr protein kinase family. LKB1 subfamily. Contains 1 protein kinase domain.
<b>翻译后修饰</b>	Phosphorylated by a cAMP-dependent protein kinase.
<b>细胞定位</b>	Nucleus. Cytoplasm. Relocates to the cytoplasm when bound to CAB39 and STRAD or CAB39 and ALS2CR2.

## 图片

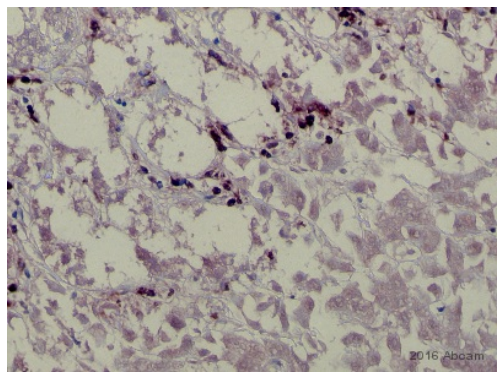


**Lane 1:** Wild-type HAP1 cell lysate (20 µg)

**Lane 2:** LKB1 knockout HAP1 cell lysate (20 µg)

**Lanes 1 and 2:** Merged signal (red and green). Green - ab15095 observed at 50 kDa. Red - loading control, ab181602, observed at 37 kDa.

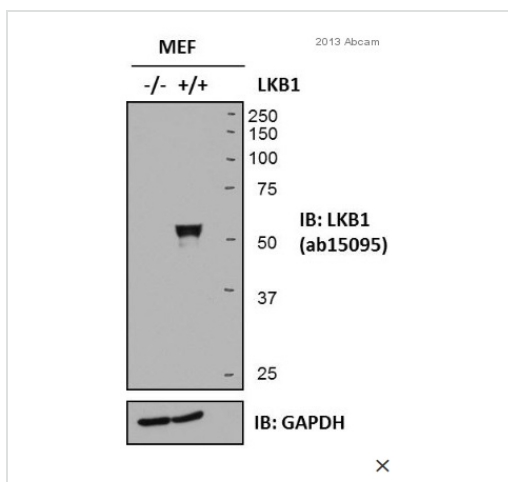
ab15095 was shown to recognize LKB1 when LKB1 knockout samples were used, along with additional cross-reactive bands. Wild-type and LKB1 knockout samples were subjected to SDS-PAGE. ab15095 and ab181602 (loading control to LKB1) were diluted 1/100 and 1/10 000 and incubated overnight at 4°C. Blots were developed with Goat anti-Mouse IgG H&L (IRDye® 800CW) preadsorbed (ab216772) and Goat Anti-Rabbit IgG H&L (IRDye® 680RD) preadsorbed (ab216777) secondary antibodies at 1/10 000 dilution for 1 h at room temperature before imaging.



Immunohistochemistry (Formalin/PFA-fixed paraffin-embedded sections) - Anti-LKB1 antibody [Ley 37D/G6] (ab15095)

This image is courtesy of an Abreview by Virginia Gutiérrez

ab15095 staining LKB1 in human hepatocarcinoma tissue sections by Immunohistochemistry (IHC-P - paraformaldehyde-fixed, paraffin-embedded sections). Tissue was fixed with formaldehyde and blocked with 10% serum for 30 minutes at 25°C; antigen retrieval was by heat mediation in a Citrate buffer pH 6 for 20 minutes at 97°C. Samples were incubated with primary antibody (1/100 in diluent) for 1 hour at 37°C. A HRP-conjugated goat anti-mouse IgG polyclonal was used as the secondary antibody.



Western blot - Anti-LKB1 antibody [Ley 37D/G6] (ab15095)

Image courtesy of anonymous abreviewer

**All lanes :** Anti-LKB1 antibody [Ley 37D/G6] (ab15095) at 1/1000 dilution

**All lanes :**

**Secondary**

**All lanes :** Polyclonal goat anti-mouse conjugated with horse radish peroxidase.

**Predicted band size:** 48.6 kDa

**Observed band size:** 55 kDa

Negative control (Lane 1): LKB1 knockout MEF cells.

Positive control (Lane 2): wildtype MEF cells.

Blocking step: 5% milk as blocking agent for 1 hour at 25 °C.

Incubation: 16 hours at 4 °C, using 5% milk in TBS/0.1 Tween as diluent.

## **Our Abpromise to you: Quality guaranteed and expert technical support**

---

- Replacement or refund for products not performing as stated on the datasheet
- Valid for 12 months from date of delivery
- Response to your inquiry within 24 hours
  
- We provide support in Chinese, English, French, German, Japanese and Spanish
- Extensive multi-media technical resources to help you
- We investigate all quality concerns to ensure our products perform to the highest standards

If the product does not perform as described on this datasheet, we will offer a refund or replacement. For full details of the Abpromise, please visit <http://www.abcam.cn/abpromise> or contact our technical team.

## **Terms and conditions**

---

- Guarantee only valid for products bought direct from Abcam or one of our authorized distributors