

## Product datasheet

# Anti-LIMCH1 antibody ab96178

★★★★★ 2 Abreviews 1 References 4 图像

### 概述

产品名称	Anti-LIMCH1抗体
描述	兔多克隆抗体to LIMCH1
宿主	Rabbit
经测试应用	适用于: ICC/IF, WB, IHC-P
种属反应性	与反应: Mouse, Human 预测可用于: Cow
免疫原	Recombinant fragment, corresponding to a sequence within amino acids 734-1057 of Human LIMCH1.
阳性对照	Mouse brain, H1299 and HeLaS3 whole cell lysates. IF/ICC: A549 cell line.

### 性能

形式	Liquid
存放说明	Shipped at 4°C. Upon delivery aliquot and store at -20°C or -80°C. Avoid repeated freeze / thaw cycles.
存储溶液	Preservative: 0.01% Thimerosal (merthiolate) Constituents: 10% Glycerol, 0.1M Tris, 0.1M Glycine, pH 7.0
纯度	Immunogen affinity purified
克隆	多克隆
同种型	IgG

### 应用

Our [Abpromise guarantee](#) covers the use of **ab96178** in the following tested applications.

The application notes include recommended starting dilutions; optimal dilutions/concentrations should be determined by the end user.

应用	Ab评论	说明
ICC/IF		Use a concentration of 1 µg/ml.
WB	★★★★★	1/500 - 1/3000. Predicted molecular weight: 119 kDa.

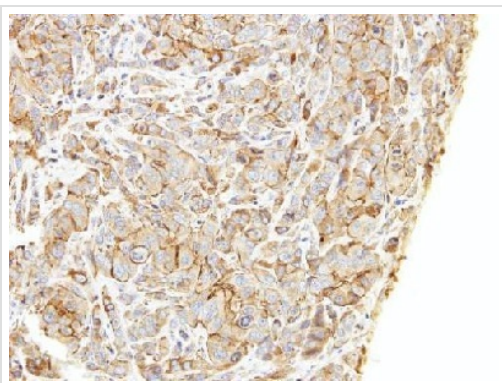
应用	Ab评论	说明
IHC-P	★★★★★	1/100 - 1/1000. Perform heat mediated antigen retrieval before commencing with IHC staining protocol. Suggest antigen retrieval using heat mediated 10mM Citrate buffer (pH6.0) or Tris-EDTA buffer (pH8.0).

## 靶标

### 序列相似性

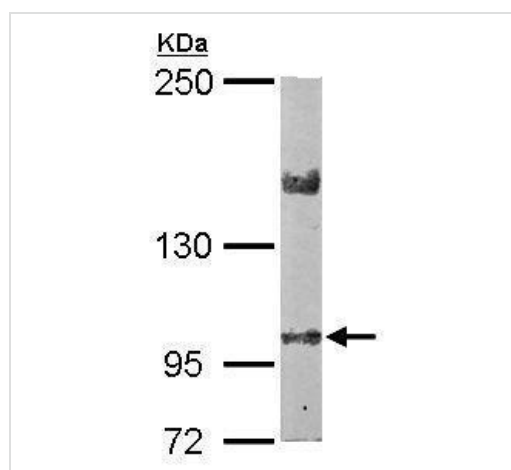
Belongs to the LIMCH1 family.  
 Contains 1 CH (calponin-homology) domain.  
 Contains 1 LIM zinc-binding domain.

## 图片



Immunohistochemical analysis of paraffin-embedded A549 xenograft, using ab96178 antibody at 1:500 dilution.

Immunohistochemistry (Formalin/PFA-fixed paraffin-embedded sections) - Anti-LIMCH1 antibody (ab96178)

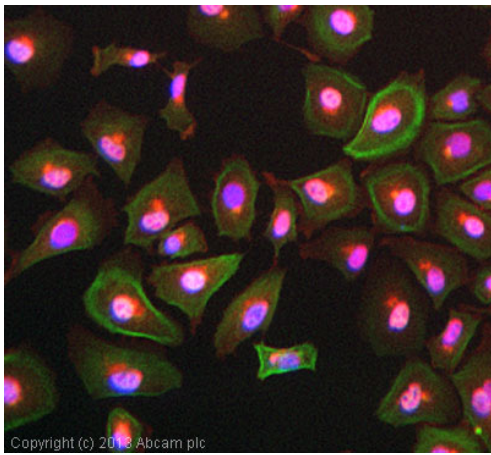


Anti-LIMCH1 antibody (ab96178) at 1/2000 dilution + Mouse brain whole cell lysate at 50  $\mu$ g

**Predicted band size:** 119 kDa

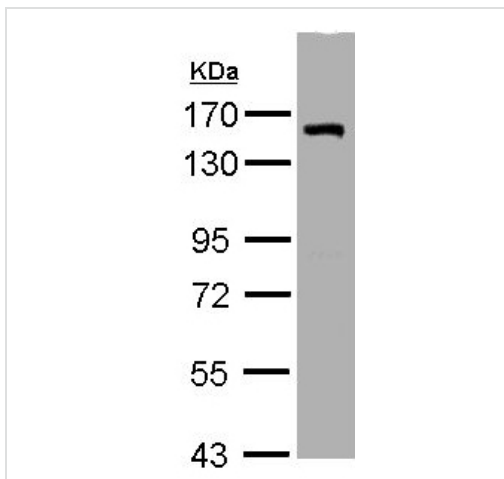
Run on 5% SDS PAGE gel

Western blot - Anti-LIMCH1 antibody (ab96178)



Immunocytochemistry/ Immunofluorescence - Anti-LIMCH1 antibody (ab96178)

ICC/IF image of ab96178 stained A549 cells. The cells were 4% formaldehyde fixed (10 min) and then incubated in 1%BSA / 10% normal goat serum / 0.3M glycine in 0.1% PBS-Tween for 1h to permeabilise the cells and block non-specific protein-protein interactions. The cells were then incubated with the antibody (ab96178, 1 µg/ml) overnight at +4°C. The secondary antibody (green) was ab96899, DyLight® 488 goat anti-rabbit IgG (H+L) used at a 1/250 dilution for 1h. Alexa Fluor® 594 WGA was used to label plasma membranes (red) at a 1/200 dilution for 1h. DAPI was used to stain the cell nuclei (blue) at a concentration of 1.43µM.



Western blot - LIMCH1 antibody (ab96178)

Anti-LIMCH1 antibody (ab96178) at 1/1000 dilution + H1299 whole cell lysate at 30 µg

**Predicted band size:** 119 kDa

**Please note:** All products are "FOR RESEARCH USE ONLY AND ARE NOT INTENDED FOR DIAGNOSTIC OR THERAPEUTIC USE"

### Our Abpromise to you: Quality guaranteed and expert technical support

- Replacement or refund for products not performing as stated on the datasheet
- Valid for 12 months from date of delivery
- Response to your inquiry within 24 hours
- We provide support in Chinese, English, French, German, Japanese and Spanish
- Extensive multi-media technical resources to help you
- We investigate all quality concerns to ensure our products perform to the highest standards

If the product does not perform as described on this datasheet, we will offer a refund or replacement. For full details of the Abpromise, please visit <http://www.abcam.cn/abpromise> or contact our technical team.

## Terms and conditions

---

- Guarantee only valid for products bought direct from Abcam or one of our authorized distributors