

## Product datasheet

# Anti-LHX9 antibody ab28737

1 References 2 图像

### 概述

|              |   |
|--------------|---|
| <b>产品名称</b>  | Anti-LHX9抗体   |
| <b>描述</b>    | 兔多克隆抗体to LHX9   |
| <b>宿主</b>    | Rabbit  |
| <b>经测试应用</b> | <b>适用于:</b> IHC-P, ELISA, WB  |
| <b>种属反应性</b> | <b>与反应:</b> Human<br><b>预测可用于:</b> Mouse, Rat, Rabbit, Horse, Chicken, Guinea pig, Cow, Cat, Dog, Pig, Caenorhabditis elegans, Drosophila melanogaster, Zebrafish  |
| <b>免疫原</b>   | A region within synthetic peptide: HNPDAKDLKQ LAQKTGLTKR VLQVWFQNAR AKFRRNLLRQ ENGGVDKADG, corresponding to C terminal amino acids 289-338 of Human LHX9<br><br><a href="#">Run BLAST with ExPASy</a> <a href="#">Run BLAST with NCBI</a>             |
| <b>阳性对照</b>  | WB: Jurkat cell lysate. IHC-P: Human intestine tissue.  |

### 性能

|             |   |
|-------------|---|
| <b>形式</b>   | Liquid  |
| <b>存放说明</b> | Shipped at 4°C. Upon delivery aliquot and store at -20°C. Avoid freeze / thaw cycles. |
| <b>存储溶液</b> | Preservative: None<br>Constituents: 2% Sucrose, PBS.                                  |
| <b>纯度</b>   | Protein A purified  |
| <b>克隆</b>   | 多克隆   |
| <b>同种型</b>  | IgG   |

### 应用

Our [Abpromise guarantee](#) covers the use of **ab28737** in the following tested applications.

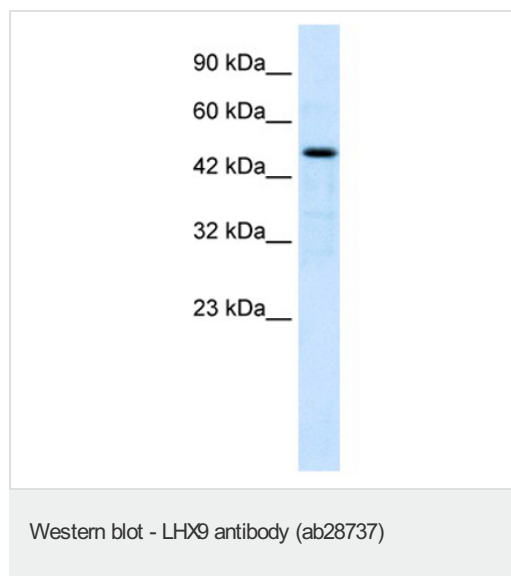
The application notes include recommended starting dilutions; optimal dilutions/concentrations should be determined by the end user.

| 应用    | Ab 评论 | 说明   |
|-------|-------|--|
| IHC-P |       | Use at an assay dependent concentration.   |
| ELISA |       | 1/62500.   |
| WB    |       | Use a concentration of 1.25 µg/ml. Detects a band of approximately 51 kDa (predicted molecular weight: 44 kDa). Good results were obtained when blocked with 5% non-fat dry milk in 0.05% PBS-T. |

## 靶标

|       |   |
|-------|---|
| 功能    | Involved in gonadal development.  |
| 序列相似性 | Contains 1 homeobox DNA-binding domain.<br>Contains 2 LIM zinc-binding domains. |
| 细胞定位  | Nucleus.  |

## 图片



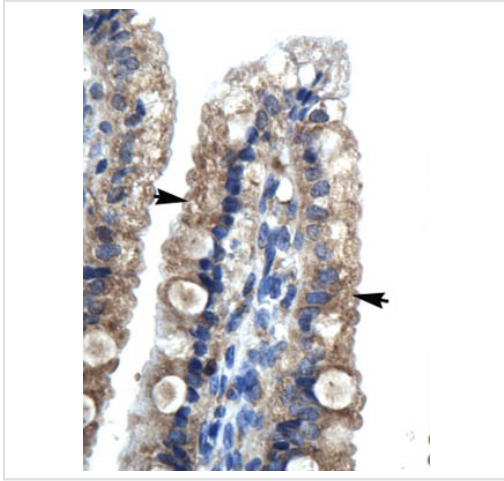
Anti-LHX9 antibody (ab28737) at 1.25 µg/ml +  
Jurkat cell lysate at 10 µg/ml

### Secondary

HRP conjugated anti Rabbit IgG at 1/50000  
dilution

**Predicted band size:** 44 kDa

**Observed band size:** 51 kDa



Ab28737, at a dilution of 4.0-8.0  $\mu\text{g/ml}$ , staining LHX9 in paraffin embedded human intestine tissue by Immunohistochemistry. The arrows point to positively labelled epithelial cells of the intestinal villus.

Magnification: 400X.

Immunohistochemistry (Paraffin-embedded sections)

- LHX9 antibody (ab28737)

**Please note:** All products are "FOR RESEARCH USE ONLY AND ARE NOT INTENDED FOR DIAGNOSTIC OR THERAPEUTIC USE"

### Our Abpromise to you: Quality guaranteed and expert technical support

- Replacement or refund for products not performing as stated on the datasheet
- Valid for 12 months from date of delivery
- Response to your inquiry within 24 hours
- We provide support in Chinese, English, French, German, Japanese and Spanish
- Extensive multi-media technical resources to help you
- We investigate all quality concerns to ensure our products perform to the highest standards

If the product does not perform as described on this datasheet, we will offer a refund or replacement. For full details of the Abpromise, please visit <http://www.abcam.cn/abpromise> or contact our technical team.

### Terms and conditions

- Guarantee only valid for products bought direct from Abcam or one of our authorized distributors