

Product datasheet

Anti-LATS1 antibody ab70562

★★★★☆ 1 Abreviews 2 References 2 图像

概述

产品名称	Anti-LATS1抗体
描述	兔多克隆抗体to LATS1
宿主	Rabbit
经测试应用	适用于: WB, IP
种属反应性	与反应: Human 预测可用于: Mouse, Rat, Chimpanzee, Rhesus monkey, Gorilla, Orangutan
免疫原	Synthetic peptide corresponding to a region between residue 1075 and the C terminus (residue 1130) of human LATS1 (SwissProt: O95835)
阳性对照	HeLa whole cell lysate

性能

形式	Liquid
存放说明	Shipped at 4°C. Upon delivery aliquot and store at -20°C. Avoid freeze / thaw cycles.
存储溶液	Preservative: 0.09% Sodium Azide Constituents: 8mM PBS, 60mM Citrate, 150mM Tris, pH 7-8
纯度	Immunogen affinity purified
纯化说明	ab70562 was affinity purified using an epitope specific to LATS1 (WARTS) immobilized on solid support.
克隆	多克隆
同种型	IgG

应用

Our [Abpromise guarantee](#) covers the use of **ab70562** in the following tested applications.

The application notes include recommended starting dilutions; optimal dilutions/concentrations should be determined by the end user.

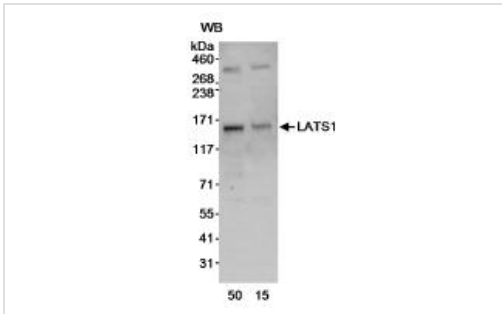
应用	Ab评论	说明
WB	★★★★☆	1/1000 - 1/10000. Detects a band of approximately 160 kDa (predicted molecular weight: 127 kDa).

应用	Ab评论	说明
IP		Use at 2-5 µg/mg of lysate.

靶标

功能	Negative regulator of YAP1 in the Hippo signaling pathway that plays a pivotal role in organ size control and tumor suppression by restricting proliferation and promoting apoptosis. The core of this pathway is composed of a kinase cascade wherein STK3/MST2 and STK4/MST1, in complex with its regulatory protein SAV1, phosphorylates and activates LATS1/2 in complex with its regulatory protein MOB1, which in turn phosphorylates and inactivates YAP1 oncoprotein and WWTR1/TAZ. Phosphorylation of YAP1 by LATS1 inhibits its translocation into the nucleus to regulate cellular genes important for cell proliferation, cell death, and cell migration. Acts as a tumor suppressor which plays a critical role in maintenance of ploidy through its actions in both mitotic progression and the G1 tetraploidy checkpoint. Negatively regulates G2/M transition by down-regulating CDK1 kinase activity. Involved in the control of p53 expression. Affects cytokinesis by regulating actin polymerization through negative modulation of LIMK1. May also play a role in endocrine function.
组织特异性	Expressed in all adult tissues examined except for lung and kidney.
序列相似性	Belongs to the protein kinase superfamily. AGC Ser/Thr protein kinase family. Contains 1 AGC-kinase C-terminal domain. Contains 1 protein kinase domain. Contains 1 UBA domain.
翻译后修饰	Autophosphorylated and phosphorylated during M-phase of the cell cycle. Phosphorylated by STK3/MST2 at Ser-909 and Thr-1079, which results in its activation. Phosphorylation at Ser-464 by NUA1 and NUA2 leads to decreased protein level and is required to regulate cellular senescence and cellular ploidy.
细胞定位	Cytoplasm, cytoskeleton, microtubule organizing center, centrosome. Localizes to the centrosomes throughout interphase but migrates to the mitotic apparatus, including spindle pole bodies, mitotic spindle, and midbody, during mitosis.

图片



Western blot - Anti-LATS1 antibody (ab70562)

All lanes : Anti-LATS1 antibody (ab70562) at 0.4 µg/ml

Lane 1 : HeLa whole cell lysate at 50 µg

Lane 2 : HeLa whole cell lysate at 15 µg

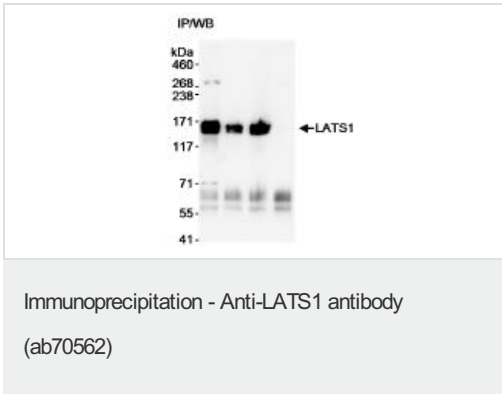
Developed using the ECL technique.

Predicted band size: 127 kDa

Observed band size: 160 kDa

Additional bands at: 350 kDa. We are unsure as to the identity of these extra bands.

Exposure time: 10 seconds



Immunoprecipitation - Anti-LATS1 antibody (ab70562)

Detection of human LATS1 by Immunoprecipitation in whole cell lysate from HeLa cells (1 mg, 1/4 of immunoprecipitate loaded per lane), using ab70562 at 3 µg/mg of lysate (lane 3). LATS1 was also immunoprecipitated with ab70562 (lane 1) and with an other LATS1 antibody (lane 2) using 3 µg/mg lysate. Lane 4: Control IgG immunoprecipitate.

Subsequent Western blot detection of LATS1 was performed using ab70562 at 0.4 µg/ml.

Detection: Chemiluminescence with an exposure time of 10 seconds.

Please note: All products are "FOR RESEARCH USE ONLY AND ARE NOT INTENDED FOR DIAGNOSTIC OR THERAPEUTIC USE"

Our Abpromise to you: Quality guaranteed and expert technical support

- Replacement or refund for products not performing as stated on the datasheet
- Valid for 12 months from date of delivery
- Response to your inquiry within 24 hours
- We provide support in Chinese, English, French, German, Japanese and Spanish
- Extensive multi-media technical resources to help you
- We investigate all quality concerns to ensure our products perform to the highest standards

If the product does not perform as described on this datasheet, we will offer a refund or replacement. For full details of the Abpromise, please visit <http://www.abcam.cn/abpromise> or contact our technical team.

Terms and conditions

- Guarantee only valid for products bought direct from Abcam or one of our authorized distributors