


Product datasheet

Anti-Kv4.2 antibody ab66639

1 图像

概述

产品名称	Anti-Kv4.2抗体
描述	兔多克隆抗体to Kv4.2
宿主	Rabbit
经测试应用	适用于: IHC-P, IHC-Fr, WB, ICC/IF
种属反应性	与反应: Human 预测可用于: Mouse, Rat 
免疫原	Synthetic peptide derived from the C terminal domain of human Kv4.2.

性能

形式	Liquid
存放说明	Shipped at 4°C. Upon delivery aliquot and store at -20°C. Avoid freeze / thaw cycles.
存储溶液	Preservative: None Constituents: Whole serum
纯度	Whole antiserum
克隆	多克隆
同种型	IgG

应用

Our [Abpromise guarantee](#) covers the use of **ab66639** in the following tested applications.

The application notes include recommended starting dilutions; optimal dilutions/concentrations should be determined by the end user.

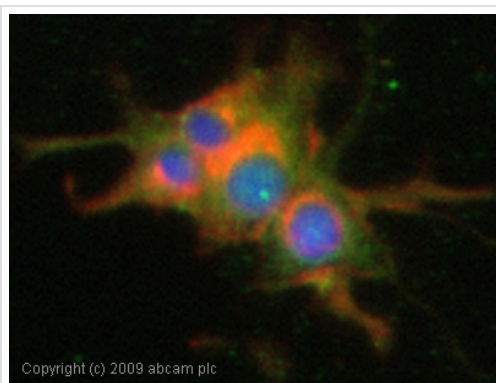
应用	Ab评论	说明
IHC-P		Use at an assay dependent concentration.
IHC-Fr		Use at an assay dependent concentration.
WB		1/1000 - 1/5000. Predicted molecular weight: 70 kDa.

应用	Ab评论	说明
ICC/IF		1/1000.

靶标

功能	Pore-forming (alpha) subunit of voltage-gated rapidly inactivating A-type potassium channels. May contribute to I(To) current in heart and I(Sa) current in neurons. Channel properties are modulated by interactions with other alpha subunits and with regulatory subunits.
组织特异性	Highly expressed throughout the brain. Expression is very low or absent in other tissues.
序列相似性	Belongs to the potassium channel family. D (Shal) (TC 1.A.1.2) subfamily. Kv4.2/KCND2 subfamily.
结构域	The segment S4 is probably the voltage-sensor and is characterized by a series of positively charged amino acids at every third position.
翻译后修饰	Phosphorylated on serine and threonine residues.
细胞定位	Cell membrane. Cell projection > dendrite. Detected in dendrites in cultured hippocampal neurons. Association with KCNIP2 probably enhances cell surface expression.

图片



Immunocytochemistry/ Immunofluorescence - Anti-Kv4.2 antibody (ab66639)

ICC/IF image of ab66639 stained PC12 cells. The cells were 100% methanol fixed (5 min) and then incubated in 1%BSA / 10% normal goat serum / 0.3M glycine in 0.1% PBS-Tween for 1h to permeabilise the cells and block non-specific protein-protein interactions. The cells were then incubated with the antibody (ab66639, 1/1000 dilution) overnight at +4°C. The secondary antibody (green) was Alexa Fluor® 488 goat anti-rabbit IgG (H+L) used at a 1/1000 dilution for 1h. Alexa Fluor® 594 WGA was used to label plasma membranes (red) at a 1/200 dilution for 1h. DAPI was used to stain the cell nuclei (blue) at a concentration of 1.43µM.

Please note: All products are "FOR RESEARCH USE ONLY AND ARE NOT INTENDED FOR DIAGNOSTIC OR THERAPEUTIC USE"

Our Abpromise to you: Quality guaranteed and expert technical support

- Replacement or refund for products not performing as stated on the datasheet

- Valid for 12 months from date of delivery
- Response to your inquiry within 24 hours

- We provide support in Chinese, English, French, German, Japanese and Spanish
- Extensive multi-media technical resources to help you
- We investigate all quality concerns to ensure our products perform to the highest standards

If the product does not perform as described on this datasheet, we will offer a refund or replacement. For full details of the Abpromise, please visit <http://www.abcam.cn/abpromise> or contact our technical team.

Terms and conditions

- Guarantee only valid for products bought direct from Abcam or one of our authorized distributors