

## Product datasheet

# Anti-Kir2.2 antibody ab84972

### 7 图像

#### 概述

产品名称	Anti-Kir2.2抗体
描述	兔多克隆抗体to Kir2.2
宿主	Rabbit
经测试应用	适用于: WB
种属反应性	与反应: Human 预测可用于: Mouse, Rat, Horse, Guinea pig, Cow, Cat, Dog
免疫原	Synthetic peptide corresponding to a region within internal sequence amino acids 360-409 (KDLVENKFLP PSANSFCYEN ELAFLSRDEE DEADGDQDGR SRDGLSPQAR) of Human Kir2.2 (NP_066292). <a href="#">Run BLAST with ExPASy</a> <a href="#">Run BLAST with NCBI</a>
阳性对照	Human fetal brain lysate.

#### 性能

形式	Liquid
存放说明	Shipped at 4°C. Upon delivery aliquot and store at -20°C. Avoid repeated freeze / thaw cycles.
存储溶液	Preservative: None Constituents: 2% Sucrose, PBS
纯度	Immunogen affinity purified
克隆	多克隆
同种型	IgG

#### 应用

Our [Abpromise guarantee](#) covers the use of **ab84972** in the following tested applications.

The application notes include recommended starting dilutions; optimal dilutions/concentrations should be determined by the end user.

应用	Ab评论	说明
----	------	----

应用	Ab评论	说明
WB		Use a concentration of 1 µg/ml. Predicted molecular weight: 49 kDa. Good results were obtained when blocked with 5% non-fat dry milk in 0.05% PBS-T.

## 靶标

### 功能

Probably participates in establishing action potential waveform and excitability of neuronal and muscle tissues. Inward rectifier potassium channels are characterized by a greater tendency to allow potassium to flow into the cell rather than out of it. Their voltage dependence is regulated by the concentration of extracellular potassium; as external potassium is raised, the voltage range of the channel opening shifts to more positive voltages. The inward rectification is mainly due to the blockage of outward current by internal magnesium. Can be blocked by extracellular barium and cesium.

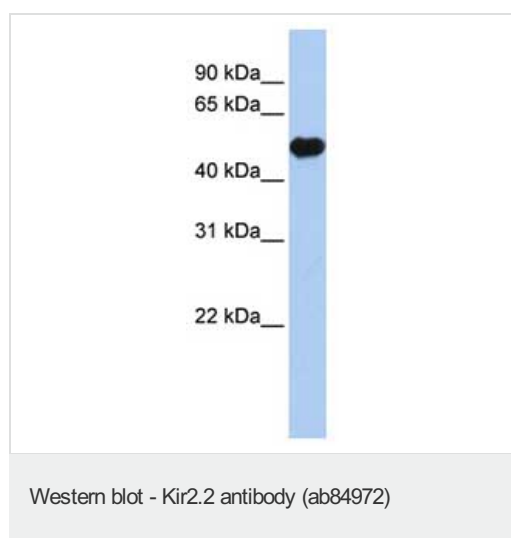
### 序列相似性

Belongs to the inward rectifier-type potassium channel (TC 1.A.2.1) family. KCNJ12 subfamily.

### 细胞定位

Membrane.

## 图片



Anti-Kir2.2 antibody (ab84972) at 1 µg/ml (in 5% skim milk / PBS buffer) + Human fetal brain lysate at 10 µg

### Secondary

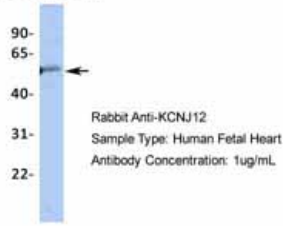
HRP conjugated anti-Rabbit IgG at 1/50000 dilution

**Predicted band size:** 49 kDa

**Observed band size:** 49 kDa

Gel concentration: 12%

### KCNJ12

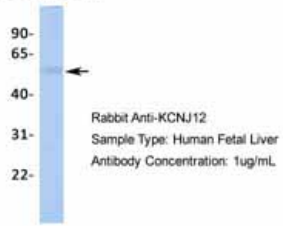


Western Blot using ab84972 at 1.0ug/ml.

Sample type: Hum. Fetal Heart Lysate

Western blot - Anti-Kir2.2 antibody (ab84972)

### KCNJ12

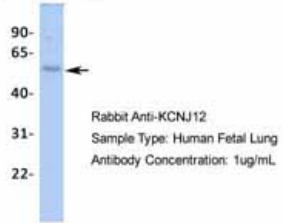


Western Blot using ab84972 at 1.0ug/ml.

Sample type: Hum. Fetal Liver Lysate

Western blot - Anti-Kir2.2 antibody (ab84972)

### KCNJ12

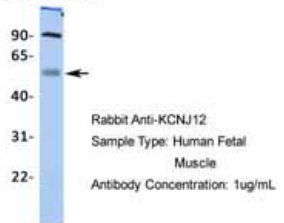


Western Blot using ab84972 at 1.0ug/ml.

Sample type: Hum. Fetal Lung Lysate

Western blot - Anti-Kir2.2 antibody (ab84972)

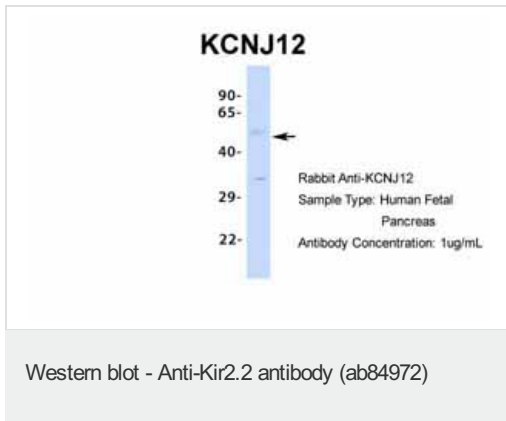
### KCNJ12



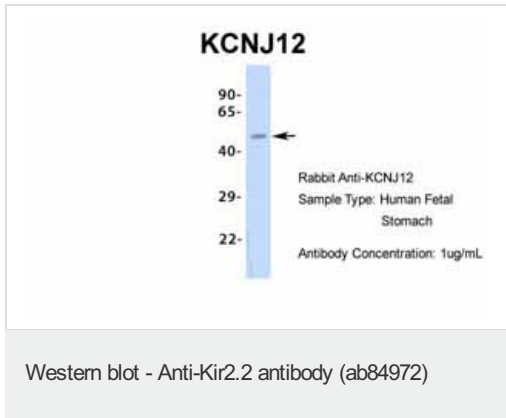
Western Blot using ab84972 at 1.0ug/ml.

Sample type: Hum. Fetal Muscle Lysate

Western blot - Anti-Kir2.2 antibody (ab84972)



Western Blot using ab84972 at 1.0ug/ml.  
Sample type: Hum. Fetal Pancreas Lysate



Western Blot using ab84972 at 1.0ug/ml.  
Sample type: Hum. Fetal Stomach Lysate

**Please note:** All products are "FOR RESEARCH USE ONLY AND ARE NOT INTENDED FOR DIAGNOSTIC OR THERAPEUTIC USE"

### Our Abpromise to you: Quality guaranteed and expert technical support

- Replacement or refund for products not performing as stated on the datasheet
- Valid for 12 months from date of delivery
- Response to your inquiry within 24 hours
- We provide support in Chinese, English, French, German, Japanese and Spanish
- Extensive multi-media technical resources to help you
- We investigate all quality concerns to ensure our products perform to the highest standards

If the product does not perform as described on this datasheet, we will offer a refund or replacement. For full details of the Abpromise, please visit <http://www.abcam.cn/abpromise> or contact our technical team.

### Terms and conditions

- Guarantee only valid for products bought direct from Abcam or one of our authorized distributors