


Product datasheet

Anti-KMT4 / Dot1L antibody ab95128

2 图像

概述

产品名称	Anti-KMT4 / Dot1L抗体
描述	兔多克隆抗体to KMT4 / Dot1L
经测试应用	适用于: IHC-P
种属反应性	与反应: Human 预测可用于: Rhesus monkey, Orangutan 
免疫原	Synthetic peptide corresponding to a region within amino acids 1000-1050 of Human KMT4/Dot1L (NP_115871.1).
阳性对照	Human Breast Carcinoma, Colon Carcinoma, Lung Adenocarcinoma, Non-Small Cell Lung Cancer, Ovarian Carcinoma and Prostate Carcinoma

性能

形式	Liquid
存放说明	Shipped at 4°C. Upon delivery aliquot and store at -20°C. Avoid freeze / thaw cycles.
存储溶液	Preservative: 0.09% Sodium Azide Constituents: 0.1% BSA, Tris buffered saline
纯度	Immunogen affinity purified
克隆	多克隆
同种型	IgG

应用

Our [Abpromise guarantee](#) covers the use of **ab95128** in the following tested applications.

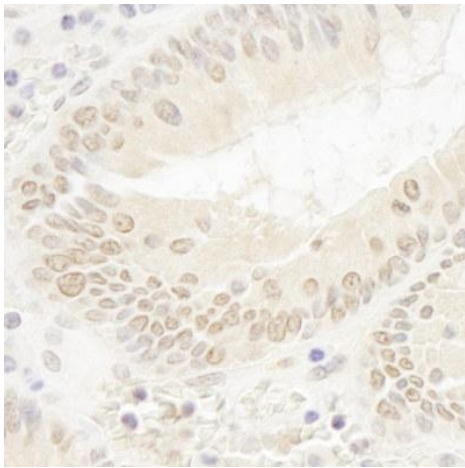
The application notes include recommended starting dilutions; optimal dilutions/concentrations should be determined by the end user.

应用	Ab评论	说明
IHC-P		1/100 - 1/500. Epitope exposure is recommended. Epitope exposure with tris-EDTA pH9.0 buffer will enhance staining.

靶标

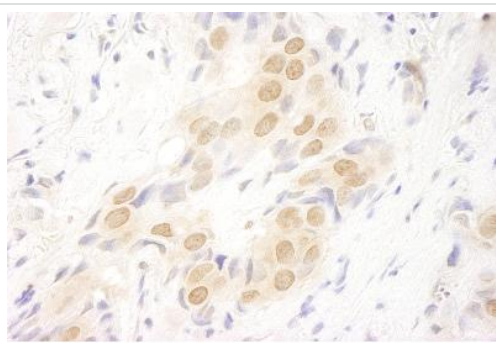
功能	Histone methyltransferase. Methylates 'Lys-79' of histone H3. Nucleosomes are preferred as substrate compared to free histones. Binds to DNA.
序列相似性	Belongs to the class Hlike SAM-binding methyltransferase superfamily. DOT1 family. Contains 1 DOT1 domain.
细胞定位	Nucleus.

图片



ab95128, at 1/100 dilution, staining KMT4 / Dot1L in formalin-fixed, paraffin-embedded Human colon carcinoma by Immunohistochemistry, using DAB staining.

Immunohistochemistry (Formalin/PFA-fixed paraffin-embedded sections) - KMT4 / Dot1L antibody (ab95128)



ab95128, at 1/100 dilution, staining KMT4 / Dot1L in formalin-fixed, paraffin-embedded Human breast carcinoma by Immunohistochemistry, using DAB staining.

Immunohistochemistry (Formalin/PFA-fixed paraffin-embedded sections) - KMT4 / Dot1L antibody (ab95128)

Please note: All products are "FOR RESEARCH USE ONLY AND ARE NOT INTENDED FOR DIAGNOSTIC OR THERAPEUTIC USE"

Our Abpromise to you: Quality guaranteed and expert technical support

- Replacement or refund for products not performing as stated on the datasheet
- Valid for 12 months from date of delivery
- Response to your inquiry within 24 hours

- We provide support in Chinese, English, French, German, Japanese and Spanish
- Extensive multi-media technical resources to help you
- We investigate all quality concerns to ensure our products perform to the highest standards

If the product does not perform as described on this datasheet, we will offer a refund or replacement. For full details of the Abpromise, please visit <http://www.abcam.cn/abpromise> or contact our technical team.

Terms and conditions

- Guarantee only valid for products bought direct from Abcam or one of our authorized distributors