

Product datasheet

Anti-KMT1B / SUV39H2 antibody - C-terminal ab71683

1 References 3 图像

概述

产品名称	Anti-KMT1B / SUV39H2抗体- C-terminal
描述	兔多克隆抗体到 KMT1B / SUV39H2 - C-terminal
宿主	Rabbit
经测试应用	适用于: ICC/IF, ELISA, WB, IHC-P
种属反应性	与反应: Human
免疫原	Synthetic peptide corresponding to Human KMT1B/ SUV39H2 (C terminal) conjugated to keyhole limpet haemocyanin. Database link: <a href="#">Q9H511</a>
阳性对照	293 and HL60 cell line lysates. Human breast carcinoma tissue.

性能

形式	Liquid
存放说明	Shipped at 4°C. Upon delivery aliquot and store at -20°C. Avoid freeze / thaw cycles.
存储溶液	Preservative: 0.09% Sodium Azide Constituents: PBS
纯度	Protein G purified
纯化说明	ab71683 is purified through a protein G column, eluted with high and low pH buffers and neutralized immediately, followed by dialysis against PBS.
克隆	多克隆
同种型	IgG

应用

Our [Abpromise guarantee](#) covers the use of **ab71683** in the following tested applications.

The application notes include recommended starting dilutions; optimal dilutions/concentrations should be determined by the end user.

应用	Ab评论	说明
ICC/IF		Use a concentration of 1 µg/ml.

应用	Ab评论	说明
ELISA		1/1000.
WB		1/250 - 1/500. Detects a band of approximately 46 kDa (predicted molecular weight: 46 kDa).
IHC-P		1/50 - 1/100.

## 靶标

### 功能

Histone methyltransferase that specifically trimethylates 'Lys-9' of histone H3 using monomethylated H3 'Lys-9' as substrate. H3 'Lys-9' trimethylation represents a specific tag for epigenetic transcriptional repression by recruiting HP1 (CBX1, CBX3 and/or CBX5) proteins to methylated histones. Mainly functions in heterochromatin regions, thereby playing a central role in the establishment of constitutive heterochromatin at pericentric and telomere regions. H3 'Lys-9' trimethylation is also required to direct DNA methylation at pericentric repeats. SUV39H1 is targeted to histone H3 via its interaction with RB1 and is involved in many processes, such as cell cycle regulation, transcriptional repression and regulation of telomere length. May participate in regulation of higher order chromatin organization during spermatogenesis.

### 序列相似性

Belongs to the histone-lysine methyltransferase family. Suvar3-9 subfamily.  
 Contains 1 chromo domain.  
 Contains 1 post-SET domain.  
 Contains 1 pre-SET domain.  
 Contains 1 SET domain.

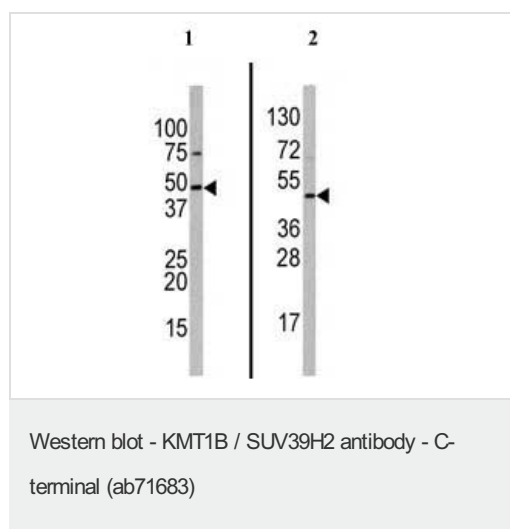
### 结构域

Although the SET domain contains the active site of enzymatic activity, both pre-SET and post-SET domains are required for methyltransferase activity. The SET domain also participates to stable binding to heterochromatin.

### 细胞定位

Nucleus. Chromosome > centromere. Associates with centromeric constitutive heterochromatin.

## 图片



**All lanes :** Anti-KMT1B / SUV39H2 antibody - C-terminal (ab71683)

**Lane 1 :** 293 cell line lysates

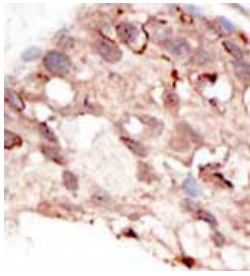
**Lane 2 :** HL60 cell line lysates

Lysates/proteins at 35 µg per lane.

**Predicted band size:** 46 kDa

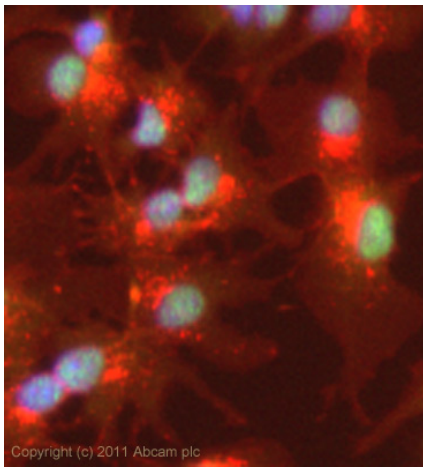
**Observed band size:** 46 kDa

**Additional bands at:** 75 kDa. We are unsure as to the identity of these extra bands.



Immunohistochemistry (Formalin/PFA-fixed paraffin-embedded sections) - KMT1B / SUV39H2 antibody - C-terminal (ab71683)

Formalin-fixed and paraffin-embedded human breast carcinoma tissue reacted with ab71683 at 1/50 dilution. A peroxidase-conjugated secondary antibody was used, followed by DAB staining.



Immunocytochemistry/ Immunofluorescence-KMT1B / SUV39H2 antibody - C-terminal(ab71683)

ICC/IF image of ab71683 stained HepG2 cells. The cells were 100% methanol fixed (5 min) and then incubated in 1%BSA / 10% normal goat serum / 0.3M glycine in 0.1% PBS-Tween for 1h to permeabilise the cells and block non-specific protein-protein interactions. The cells were then incubated with the antibody (ab71683, 1 µg/ml) overnight at +4°C. The secondary antibody (green) was Alexa Fluor® 488 goat anti-rabbit IgG (H+L) used at a 1/1000 dilution for 1h. Alexa Fluor® 594 WGA was used to label plasma membranes (red) at a 1/200 dilution for 1h. DAPI was used to stain the cell nuclei (blue) at a concentration of 1.43µM.

**Please note:** All products are "FOR RESEARCH USE ONLY AND ARE NOT INTENDED FOR DIAGNOSTIC OR THERAPEUTIC USE"

### Our Abpromise to you: Quality guaranteed and expert technical support

- Replacement or refund for products not performing as stated on the datasheet
- Valid for 12 months from date of delivery
- Response to your inquiry within 24 hours
- We provide support in Chinese, English, French, German, Japanese and Spanish
- Extensive multi-media technical resources to help you
- We investigate all quality concerns to ensure our products perform to the highest standards

If the product does not perform as described on this datasheet, we will offer a refund or replacement. For full details of the Abpromise, please visit <http://www.abcam.cn/abpromise> or contact our technical team.

## Terms and conditions

---

- Guarantee only valid for products bought direct from Abcam or one of our authorized distributors