

## Product datasheet

# Anti-KLF10 antibody ab85970

1 References 1 图像

### 概述

产品名称	Anti-KLF10抗体
描述	兔多克隆抗体to KLF10
经测试应用	适用于: WB 不适用于: IP
种属反应性	与反应: Human 预测可用于: Horse, Cow, Pig, Chimpanzee, Rhesus monkey, Gorilla, Orangutan, Other
免疫原	Synthetic peptide, corresponding to a region between residues 430 and 480 of human KLF10 (NP_005646.1)
阳性对照	HeLa and 293T whole cell lysates.

### 性能

形式	Liquid
存放说明	Shipped at 4°C. Upon delivery aliquot and store at -20°C. Avoid freeze / thaw cycles.
存储溶液	Preservative: 0.09% Sodium Azide Constituents: 0.1% BSA, Tris buffered saline
纯度	Immunogen affinity purified
纯化说明	ab85970 was affinity purified using an epitope specific to KLF10 immobilized on solid support.
克隆	多克隆
同种型	IgG

### 应用

Our [Abpromise guarantee](#) covers the use of **ab85970** in the following tested applications.

The application notes include recommended starting dilutions; optimal dilutions/concentrations should be determined by the end user.

应用	Ab评论	说明
WB		1/2000 - 1/10000. Predicted molecular weight: 53 kDa.

应用说明 Is unsuitable for IP.

## 靶标

### 功能

Transcriptional repressor which binds to the consensus sequence 5'-GGTGTG-3'. Plays a role in the regulation of the circadian clock; binds to the GC box sequence in the promoter of the core clock component ARTNL/BMAL1 and represses its transcriptional activity. Regulates the circadian expression of genes involved in lipogenesis, gluconeogenesis, and glycolysis in the liver. Represses the expression of PCK2, a rate-limiting step enzyme of gluconeogenesis (By similarity). May play a role in the cell cycle regulation.

### 序列相似性

Belongs to the Sp1 C2H2-type zinc-finger protein family.  
Contains 3 C2H2-type zinc fingers.

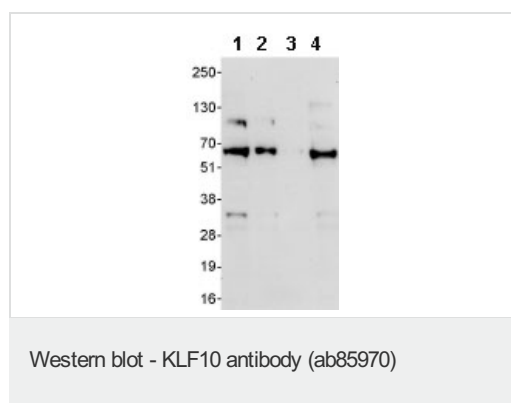
### 翻译后修饰

Ubiquitinated; mediated by SIAH1 and leading to its subsequent proteasomal degradation.

### 细胞定位

Nucleus.

## 图片



**All lanes :** Anti-KLF10 antibody (ab85970) at 0.04 µg/ml

**Lane 1 :** HeLa whole cell lysate at 50 µg

**Lane 2 :** HeLa whole cell lysate at 15 µg

**Lane 3 :** HeLa whole cell lysate at 5 µg

**Lane 4 :** 293T whole cell lysate at 50 µg

**Predicted band size :** 53 kDa

**Exposure time :** 30 seconds

**Please note:** All products are "FOR RESEARCH USE ONLY AND ARE NOT INTENDED FOR DIAGNOSTIC OR THERAPEUTIC USE"

## Our Abpromise to you: Quality guaranteed and expert technical support

- Replacement or refund for products not performing as stated on the datasheet
- Valid for 12 months from date of delivery
- Response to your inquiry within 24 hours
- We provide support in Chinese, English, French, German, Japanese and Spanish
- Extensive multi-media technical resources to help you
- We investigate all quality concerns to ensure our products perform to the highest standards

If the product does not perform as described on this datasheet, we will offer a refund or replacement. For full details of the Abpromise, please visit <http://www.abcam.cn/abpromise> or contact our technical team.

## Terms and conditions

---

- Guarantee only valid for products bought direct from Abcam or one of our authorized distributors