


Product datasheet

Anti-KIAA1688 antibody ab93780

2 图像

概述

产品名称	Anti-KIAA1688抗体
描述	兔多克隆抗体to KIAA1688
宿主	Rabbit
经测试应用	适用于: WB, IP
种属反应性	与反应: Human 预测可用于: Chimpanzee, Rhesus monkey, Gorilla, Tilapia 
免疫原	Synthetic peptide from a region within amino acids 50-100 of Human KIAA1688 (EAW82062.1)
阳性对照	HeLa cell lysate 293 T cell lysate

性能

形式	Liquid
存放说明	Shipped at 4°C. Upon delivery aliquot and store at -20°C. Avoid freeze / thaw cycles.
存储溶液	Preservative: 0.09% Sodium Azide Constituents: Tris citrate/phosphate, pH 7 to 8
纯度	Immunogen affinity purified
克隆	多克隆
同种型	IgG

应用

Our [Abpromise guarantee](#) covers the use of **ab93780** in the following tested applications.

The application notes include recommended starting dilutions; optimal dilutions/concentrations should be determined by the end user.

应用	Ab评论	说明
----	------	----

WB

IP

应用说明 IP: Use at 5-15µg/mg of lysate.

WB: 1/2000 - 1/10000. Predicted molecular weight: 121 kDa.

Not yet tested in other applications.

Optimal dilutions/concentrations should be determined by the end user.

## 靶标

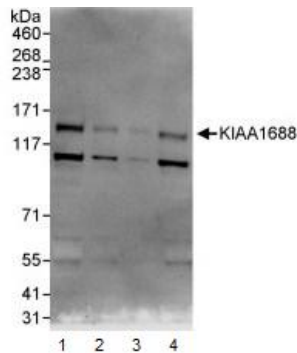
## 相关性

KIAA1688 was identified as a hypothetical protein predicted from the in silico analysis of long cDNAs isolated in the Kazusa cDNA sequencing project. The function of KIAA1688 has not been characterized.

## 细胞定位

Nuclear

## 图片



Western blot - Anti-KIAA1688 antibody (ab93780)

**All lanes :** Anti-KIAA1688 antibody (ab93780) at 0.1 µg/ml

**Lane 1 :** HeLa cell lysate at 50 µg

**Lane 2 :** HeLa cell lysate at 15 µg

**Lane 3 :** HeLa cell lysate at 5 µg

**Lane 4 :** 293T cell lysate at 50 µg

Developed using the ECL technique.

**Predicted band size:** 121 kDa

**Exposure time:** 3 minutes



Immunoprecipitation - Anti-KIAA1688 antibody (ab93780)

**Immunoprecipitation :** 1 mg of HeLa cell lysate immunoprecipitated with ab93780 at 10 µg/mg lysate; 20% of immunoprecipitate loaded in lane

**Western Blot :** KIAA1688 antibody (ab93780) at 1 µg/ml

Developed using the ECL technique

**Exposure time :** 3 minutes

**Please note:** All products are "FOR RESEARCH USE ONLY AND ARE NOT INTENDED FOR DIAGNOSTIC OR THERAPEUTIC USE"

## **Our Abpromise to you: Quality guaranteed and expert technical support**

---

- Replacement or refund for products not performing as stated on the datasheet
- Valid for 12 months from date of delivery
- Response to your inquiry within 24 hours
  
- We provide support in Chinese, English, French, German, Japanese and Spanish
- Extensive multi-media technical resources to help you
- We investigate all quality concerns to ensure our products perform to the highest standards

If the product does not perform as described on this datasheet, we will offer a refund or replacement. For full details of the Abpromise, please visit <http://www.abcam.cn/abpromise> or contact our technical team.

## **Terms and conditions**

---

- Guarantee only valid for products bought direct from Abcam or one of our authorized distributors