

Product datasheet

Anti-KDM4B / JMJD2B antibody ab103129

1 References 3 图像

概述

产品名称	Anti-KDM4B / JMJD2B抗体
描述	兔多克隆抗体to KDM4B / JMJD2B
宿主	Rabbit
经测试应用	适用于: Flow Cyt, WB, IHC-P
种属反应性	与反应: Human
免疫原	Synthetic peptide corresponding to Human KDM4B/ JMJD2B aa 4-31 (N terminal) conjugated to keyhole limpet haemocyanin. Database link: <a href="#">O94953</a>
阳性对照	K562 cell lysate, Human Testis tissue

性能

形式	Liquid
存放说明	Shipped at 4°C. Store at +4°C short term (1-2 weeks). Upon delivery aliquot. Store at -20°C long term.
存储溶液	Preservative: 0.09% Sodium Azide Constituents: PBS
纯度	Immunogen affinity purified
纯化说明	This antibody is purified through a protein A column, followed by peptide affinity purification.
克隆	多克隆
同种型	IgG

应用

Our [Abpromise guarantee](#) covers the use of **ab103129** in the following tested applications.

The application notes include recommended starting dilutions; optimal dilutions/concentrations should be determined by the end user.

应用	Ab评论	说明
Flow Cyt		1/10 - 1/50.
WB		1/100 - 1/500. Predicted molecular weight: 122 kDa.
IHC-P		1/50 - 1/100. Perform heat mediated antigen retrieval with citrate buffer pH 6 before commencing with IHC staining protocol.

## 靶标

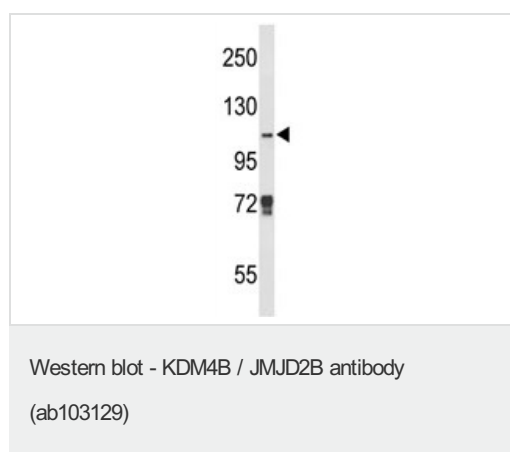
**功能** Histone demethylase that specifically demethylates 'Lys-9' of histone H3, thereby playing a role in histone code. Does not demethylate histone H3 'Lys-4', H3 'Lys-27', H3 'Lys-36' nor H4 'Lys-20'. Only able to demethylate trimethylated H3 'Lys-9', with a weaker activity than KDM4A, KDM4C and KDM4D. Demethylation of Lys residue generates formaldehyde and succinate.

**序列相似性** Belongs to the JHDM3 histone demethylase family.  
 Contains 1 JmjC domain.  
 Contains 1 JmjN domain.  
 Contains 2 PHD-type zinc fingers.  
 Contains 2 Tudor domains.

**结构域** The 2 Tudor domains recognize and bind methylated histones. Double Tudor domain has an interdigitated structure and the unusual fold is required for its ability to bind methylated histone tails.

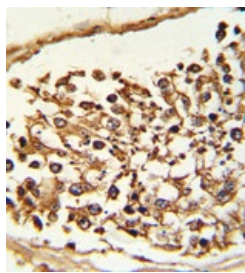
**细胞定位** Nucleus.

## 图片



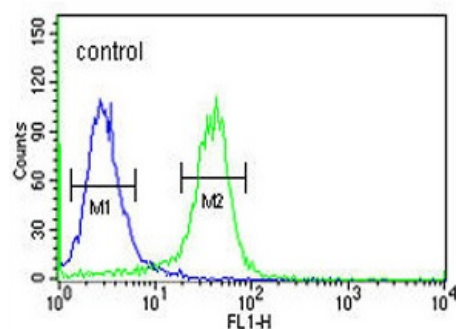
Anti-KDM4B / JMJD2B antibody (ab103129)  
 at 1/100 dilution + K562 cell lysate at 35 µg

**Predicted band size:** 122 kDa



Immunohistochemistry (Formalin/PFA-fixed paraffin-embedded sections) - KDM4B / JMJD2B antibody (ab103129)

Formalin-fixed and paraffin-embedded Human Testis tissue, which was peroxidase-conjugated to the secondary antibody, followed by DAB staining, using ab103129 at a dilution of 1/50.



Flow Cytometry - Anti-KDM4B / JMJD2B antibody (ab103129)

Flow cytometry analysis of K562 cells (right histogram) compared to a negative control cell (left histogram) using ab103129. FITC-conjugated goat anti-rabbit secondary antibodies were used for the analysis.

**Please note:** All products are "FOR RESEARCH USE ONLY AND ARE NOT INTENDED FOR DIAGNOSTIC OR THERAPEUTIC USE"

### Our Abpromise to you: Quality guaranteed and expert technical support

- Replacement or refund for products not performing as stated on the datasheet
- Valid for 12 months from date of delivery
- Response to your inquiry within 24 hours
- We provide support in Chinese, English, French, German, Japanese and Spanish
- Extensive multi-media technical resources to help you
- We investigate all quality concerns to ensure our products perform to the highest standards

If the product does not perform as described on this datasheet, we will offer a refund or replacement. For full details of the Abpromise, please visit <http://www.abcam.cn/abpromise> or contact our technical team.

### Terms and conditions

- Guarantee only valid for products bought direct from Abcam or one of our authorized distributors