


Product datasheet

Anti-KCNK3 antibody ab49433

1 图像

概述

产品名称	Anti-KCNK3抗体
描述	兔多克隆抗体to KCNK3
经测试应用	适用于: WB, ELISA
种属反应性	与反应: Human 预测可用于: Mouse, Rat, Sheep, Cow, Dog 
免疫原	A region within synthetic peptide: IPMIIPRDLS TSDTCVEQSH SSPGGGGGRYS DTPSRRCLCS GAPRSAISSV, corresponding to C terminal amino acids 325-374 of Human KCNK3 Run BLAST with ExPASy Run BLAST with NCBI
阳性对照	Jurkat cell lysate

性能

形式	Liquid
存放说明	Shipped at 4°C. Upon delivery aliquot and store at -20°C. Avoid freeze / thaw cycles.
存储溶液	Preservative: None Constituents: 2% Sucrose, PBS
纯度	Protein A purified
克隆	多克隆
同种型	IgG

应用

Our [Abpromise guarantee](#) covers the use of **ab49433** in the following tested applications.

The application notes include recommended starting dilutions; optimal dilutions/concentrations should be determined by the end user.

应用	Ab 评论	说明
WB		Use a concentration of 1.25 µg/ml. Detects a band of approximately 38 kDa (predicted molecular weight: 43 kDa). Good results were obtained when blocked with 5% non-fat dry milk in 0.05% PBS-T.

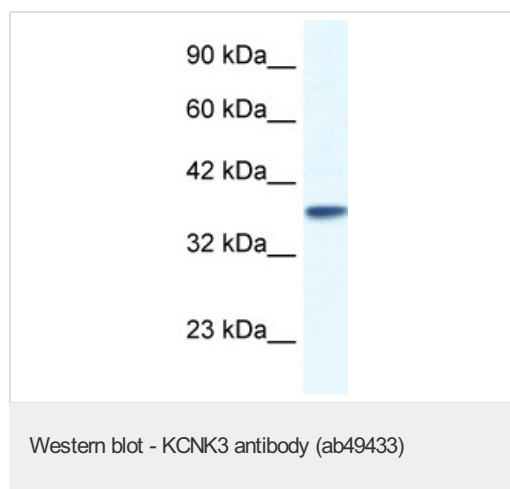
应用	Ab 评论	说明
----	-------	----

ELISA Use at an assay dependent concentration.
ELISA: titre using peptide based assay: 1/1562500.

靶标

功能	pH-dependent, voltage-insensitive, background potassium channel protein. Rectification direction results from potassium ion concentration on either side of the membrane. Acts as an outward rectifier when external potassium concentration is low. When external potassium concentration is high, current is inward.
组织特异性	Widespread expression in adult. Strongest expression in pancreas and placenta. Lower expression in brain, lung, prostate, heart, kidney, uterus, small intestine and colon.
疾病相关	Pulmonary hypertension, primary, 4
序列相似性	Belongs to the two pore domain potassium channel (TC 1.A.1.8) family.
细胞定位	Membrane.

图片



Anti-KCNK3 antibody (ab49433) at 1.25 µg/ml
+ Jurkat cell lysate at 10 µg

Secondary

HRP conjugated anti-Rabbit IgG at 1/50000 dilution

Predicted band size : 43 kDa

Observed band size : 38 kDa

Please note: All products are "FOR RESEARCH USE ONLY AND ARE NOT INTENDED FOR DIAGNOSTIC OR THERAPEUTIC USE"

Our Abpromise to you: Quality guaranteed and expert technical support

- Replacement or refund for products not performing as stated on the datasheet
- Valid for 12 months from date of delivery
- Response to your inquiry within 24 hours
- We provide support in Chinese, English, French, German, Japanese and Spanish
- Extensive multi-media technical resources to help you

- We investigate all quality concerns to ensure our products perform to the highest standards

If the product does not perform as described on this datasheet, we will offer a refund or replacement. For full details of the Abpromise, please visit <http://www.abcam.cn/abpromise> or contact our technical team.

Terms and conditions

- Guarantee only valid for products bought direct from Abcam or one of our authorized distributors