


Product datasheet

Anti-KCNK10 antibody ab48868

1 图像

概述

产品名称	Anti-KCNK10抗体
描述	兔多克隆抗体to KCNK10
宿主	Rabbit
经测试应用	适用于: WB, ELISA
种属反应性	与反应: Human 预测可用于: Mouse, Rat, Dog 
免疫原	A region within synthetic peptide: HGQGASEDNI INKFGSTSRL TKRKNKDLKK TLPEDVQKIY KTFRNYSLDE, corresponding to C terminal amino acids 434-483 of Human KCNK10 <a href="#">Run BLAST with ExPASy</a> <a href="#">Run BLAST with NCBI</a>
阳性对照	Jurkat cell lysate.

性能

形式	Liquid
存放说明	Shipped at 4°C. Upon delivery aliquot and store at -20°C. Avoid freeze / thaw cycles.
存储溶液	Preservative: None Constituents: 2% Sucrose, PBS
纯度	Protein A purified
克隆	多克隆
同种型	IgG

应用

Our [Abpromise guarantee](#) covers the use of **ab48868** in the following tested applications.

The application notes include recommended starting dilutions; optimal dilutions/concentrations should be determined by the end user.

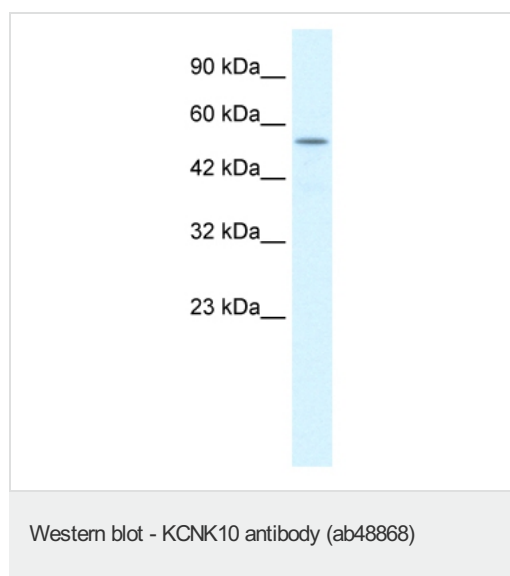
应用	Ab 评论	说明

应用	Ab 评论	说明
WB		Use a concentration of 1.4 µg/ml. Detects a band of approximately 56 kDa (predicted molecular weight: 59 kDa). Good results were obtained when blocked with 5% non-fat dry milk in 0.05% PBS-T.
ELISA		1/312500.

## 靶标

<b>功能</b>	Outward rectifying potassium channel. Produces rapidly activating and non-inactivating outward rectifier K(+) currents. Activated by arachidonic acid and other naturally occurring unsaturated free fatty acids.
<b>组织特异性</b>	Abundantly expressed in pancreas and kidney and to a lower level in brain, testis, colon, and small intestine. Isoform b is strongly expressed in kidney (primarily in the proximal tubule) and pancreas, whereas isoform c is abundantly expressed in brain.
<b>序列相似性</b>	Belongs to the two pore domain potassium channel (TC 1.A.1.8) family.
<b>细胞定位</b>	Membrane.

## 图片



Anti-KCNK10 antibody (ab48868) at 1.4 µg/ml  
(in 5% skimmed milk/PBS) + Jurkat cell lysate  
at 10 µg

### Secondary

HRP conjugated anti-Rabbit IgG at 1/50000  
dilution

**Predicted band size:** 59 kDa

**Observed band size:** 56 kDa

Gel concentration 12%.

**Please note:** All products are "FOR RESEARCH USE ONLY AND ARE NOT INTENDED FOR DIAGNOSTIC OR THERAPEUTIC USE"

## Our Abpromise to you: Quality guaranteed and expert technical support

- Replacement or refund for products not performing as stated on the datasheet
- Valid for 12 months from date of delivery

- Response to your inquiry within 24 hours
- We provide support in Chinese, English, French, German, Japanese and Spanish
- Extensive multi-media technical resources to help you
- We investigate all quality concerns to ensure our products perform to the highest standards

If the product does not perform as described on this datasheet, we will offer a refund or replacement. For full details of the Abpromise, please visit <http://www.abcam.cn/abpromise> or contact our technical team.

### **Terms and conditions**

---

- Guarantee only valid for products bought direct from Abcam or one of our authorized distributors