

Product datasheet

Anti-K Cadherin antibody ab64917

2 References 3 图像

概述

产品名称	Anti-K Cadherin抗体
描述	兔多克隆抗体to K Cadherin
宿主	Rabbit
经测试应用	适用于: IHC-P, Flow Cyt, WB, ELISA
种属反应性	与反应: Human
免疫原	A KLH conjugated synthetic peptide selected from the C-terminal region of human K Cadherin.
阳性对照	293 cell line lysates.

性能

形式	Liquid
存放说明	Shipped at 4°C. Store at +4°C short term (1-2 weeks). Upon delivery aliquot. Store at -20°C long term.
存储溶液	Preservative: 0.09% Sodium Azide Constituents: PBS
纯度	Immunogen affinity purified
纯化说明	ab64917 is purified through a protein A column, followed by peptide affinity purification.
克隆	多克隆
同种型	IgG

应用

Our [Abpromise guarantee](#) covers the use of **ab64917** in the following tested applications.

The application notes include recommended starting dilutions; optimal dilutions/concentrations should be determined by the end user.

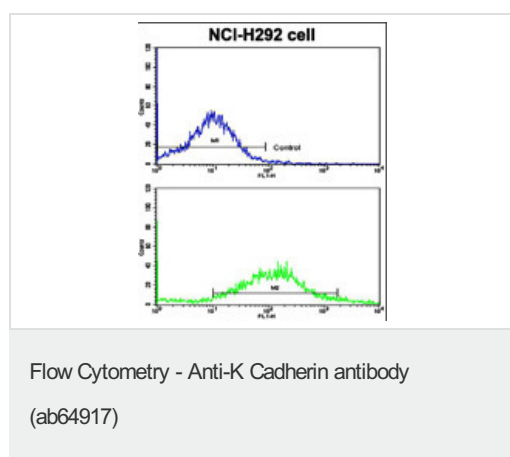
应用	Ab 评论	说明
IHC-P		1/10 - 1/50.

应用	Ab 评论	说明
Flow Cyt		1/10 - 1/50. ab171870 - Rabbit polyclonal IgG, is suitable for use as an isotype control with this antibody.
WB		1/50 - 1/1000. Detects a band of approximately 130 kDa (predicted molecular weight: 88 kDa). In recent lot testing (Dec 2013), the apparent MW (130 kDa) is higher than the predicted MW (88 kDa) in over expression lysate, human brain and U251 cells under reduced and denatured conditions.
ELISA		1/1000.

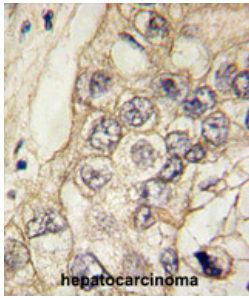
靶标

功能	Cadherins are calcium dependent cell adhesion proteins. They preferentially interact with themselves in a homophilic manner in connecting cells; cadherins may thus contribute to the sorting of heterogeneous cell types.
组织特异性	Highly expressed in brain, cerebellum, and kidney. Lung, pancreas, and gastric mucosa show a weak expression. Also expressed in certain liver and kidney carcinomas.
序列相似性	Contains 5 cadherin domains.
细胞定位	Cell membrane.

图片

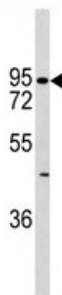


Flow cytometry analysis of NCI-H292 cells labeling K Cadherin with ab64917. A FITC-conjugated Goat anti-rabbit was used as the secondary antibody.



Immunohistochemistry (Formalin/PFA-fixed paraffin-embedded sections) analysis of Human hepatocarcinoma tissue sections labeling K Cadherin with ab64917.

Immunohistochemistry (Formalin/PFA-fixed paraffin-embedded sections) - Anti-K Cadherin antibody (ab64917)



Anti-K Cadherin antibody (ab64917) at 1/60 dilution + 293 cell line lysates at 35 µg

Predicted band size: 88 kDa

Observed band size: 88 kDa

Additional bands at: 45 kDa. We are unsure as to the identity of these extra bands.

Western blot - Anti-K Cadherin antibody (ab64917)

Please note: All products are "FOR RESEARCH USE ONLY AND ARE NOT INTENDED FOR DIAGNOSTIC OR THERAPEUTIC USE"

Our Abpromise to you: Quality guaranteed and expert technical support

- Replacement or refund for products not performing as stated on the datasheet
- Valid for 12 months from date of delivery
- Response to your inquiry within 24 hours
- We provide support in Chinese, English, French, German, Japanese and Spanish
- Extensive multi-media technical resources to help you
- We investigate all quality concerns to ensure our products perform to the highest standards

If the product does not perform as described on this datasheet, we will offer a refund or replacement. For full details of the Abpromise, please visit <http://www.abcam.cn/abpromise> or contact our technical team.

Terms and conditions

- Guarantee only valid for products bought direct from Abcam or one of our authorized distributors