

Product datasheet

Anti-Involucrin antibody [SY8] ab20202

1 References 1 图像

概述

产品名称	Anti-Involucrin抗体[SY8]
描述	小鼠单克隆抗体[SY8] to Involucrin
特异性	Keratinocytes of epidermis and other stratified squamous epithelia
经测试应用	适用于: IP, WB, IHC-P
种属反应性	与反应: Human, Pig, Gorilla
免疫原	Pure involucrin from human keratinocytes.

性能

形式	Liquid
存放说明	Shipped at 4°C. Store at +4°C short term (1-2 weeks). Upon delivery aliquot. Store at -20°C or -80°C. Avoid freeze / thaw cycle.
存储溶液	Preservative: None Constituents: PBS
纯度	Protein G purified
克隆	单克隆
克隆编号	SY8
骨髓瘤	P3x63
同种型	IgG1
轻链类型	unknown

应用

Our [Abpromise guarantee](#) covers the use of **ab20202** in the following tested applications.

The application notes include recommended starting dilutions; optimal dilutions/concentrations should be determined by the end user.

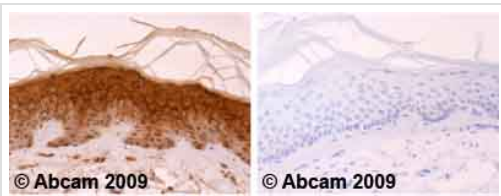
应用	Ab评论	说明
IP		Use at an assay dependent concentration.

应用	Ab评论	说明
WB		Use at an assay dependent concentration. Predicted molecular weight: 68 kDa.
IHC-P		Use at an assay dependent concentration.

靶标

功能	Part of the insoluble cornified cell envelope (CE) of stratified squamous epithelia.
组织特异性	Keratinocytes of epidermis and other stratified squamous epithelia.
序列相似性	Belongs to the involucrin family.
翻译后修饰	Substrate of transglutaminase. Some glutamines and lysines are cross-linked to other involucrin molecules, to other proteins such as keratin, desmoplakin, periplakin and envoplakin, and to lipids like omega-hydroxyceramide.
细胞定位	Cytoplasm. Constituent of the scaffolding of the cornified envelope.

图片



Immunohistochemistry (Formalin/PFA-fixed paraffin-embedded sections)-Involucrin antibody [SY8] (ab20202)

Ab20202 staining Human skin Staining is localised to the cytoplasm.

Left panel: with primary antibody at 1 ug/ml.

Right panel: isotype control.

Sections were stained using an automated system DAKO Autostainer Plus , at room temperature. Sections were rehydrated and antigen retrieved with the DAKO 3-in-1 antigen retrieval buffer citrate pH 6.0 in a DAKO PT Link. Slides were peroxidase blocked in 3% H₂O₂ in methanol for 10 minutes. They were then blocked with Dako Protein block for 10 minutes (containing casein 0.25% in PBS) then incubated with primary antibody for 20 minutes and detected with Dako Envision Flex amplification kit for 30 minutes. Colorimetric detection was completed with diaminobenzidine for 5 minutes. Slides were counterstained with Haematoxylin and coverslipped under DePeX. Please note that for manual staining we recommend to optimize the primary antibody concentration and incubation time (overnight incubation), and amplification may be required.

Please note: All products are "FOR RESEARCH USE ONLY AND ARE NOT INTENDED FOR DIAGNOSTIC OR THERAPEUTIC USE"

Our Abpromise to you: Quality guaranteed and expert technical support

- Replacement or refund for products not performing as stated on the datasheet
- Valid for 12 months from date of delivery
- Response to your inquiry within 24 hours
- We provide support in Chinese, English, French, German, Japanese and Spanish
- Extensive multi-media technical resources to help you
- We investigate all quality concerns to ensure our products perform to the highest standards

If the product does not perform as described on this datasheet, we will offer a refund or replacement. For full details of the Abpromise, please visit <http://www.abcam.cn/abpromise> or contact our technical team.

Terms and conditions

- Guarantee only valid for products bought direct from Abcam or one of our authorized distributors