

Product datasheet

Anti-Integrin alpha 1 antibody - Cytoplasmic domain ab78479

3 References 1 图像

概述

产品名称	Anti-Integrin alpha 1 抗体-细胞质 domain
描述	兔多克隆抗体 to Integrin alpha 1
宿主	Rabbit
特异性	ab78479 is specific to Integrin alpha 1. No cross reactivity to alpha2, alpha3, alpha4, alpha5, alpha6, or alphaV integrin subunits.
经测试应用	适用于: ELISA, IP, RIA, WB, ICC, IHC-P, ICC/IF
种属反应性	与反应: Rat, Sheep, Goat, Horse, Chicken, Hamster, Human, Pig, Monkey
免疫原	Synthetic peptide corresponding to Rat Integrin alpha 1 aa 1166-1180 (C terminal). Cytoplasmic domain. Sequence: KIGFFKRPLKKKMEK Run BLAST with Run BLAST with
阳性对照	PC12 cells. Rhesus monkey maternal uterine endometrium tissue.

性能

形式	Liquid
存放说明	Shipped at 4°C. Upon delivery aliquot and store at -20°C. Avoid freeze / thaw cycles.
存储溶液	Preservative: 0.05% Sodium Azide Constituents: Whole serum
纯度	Whole antiserum
克隆	多克隆
同种型	IgG

应用

Our [Abpromise guarantee](#) covers the use of **ab78479** in the following tested applications.

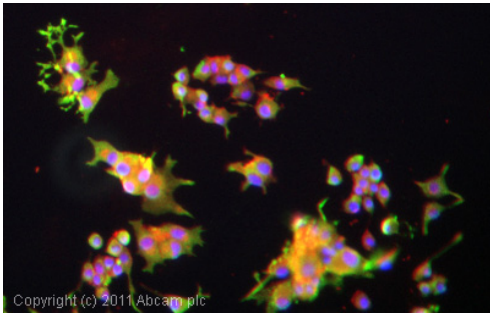
The application notes include recommended starting dilutions; optimal dilutions/concentrations should be determined by the end user.

应用	Ab评论	说明
ELISA		1/1000.
IP		Use 5µl for 10 ⁶ cells.
RIA		1/1000.
WB		1/100 - 1/1000. Detects a band of approximately 200 kDa (predicted molecular weight: 131 kDa).
ICC		Use at an assay dependent dilution.
IHC-P		1/200. Suggested for use on acetone fixed tissue only. This antibody has been reported to react in 4% PFA fixed monkey tissue treated with citrate.
ICC/IF		Use at an assay dependent concentration.

靶标

功能	Integrin alpha-1/beta-1 is a receptor for laminin and collagen. It recognizes the proline-hydroxylated sequence G-F-P-G-E-R in collagen.
序列相似性	Belongs to the integrin alpha chain family. Contains 7 FG-GAP repeats. Contains 1 VWFA domain.
结构域	The integrin I-domain (insert) is a VWFA domain. Integrins with I-domains do not undergo protease cleavage.
细胞定位	Membrane.

图片



Copyright (c) 2011 Abcam plc

Immunocytochemistry/ Immunofluorescence - Anti-Integrin alpha 1 antibody - Cytoplasmic domain (ab78479)

ICC/IF image of ab78479 stained PC12 cells. The cells were 4% formaldehyde fixed (10 min) and then incubated in 1%BSA / 10% normal goat serum / 0.3M glycine in 0.1% PBS-Tween for 1h to permeabilise the cells and block non-specific protein-protein interactions. The cells were then incubated with the antibody (ab78479, 1/200 dilution) overnight at +4°C. The secondary antibody (green) was Alexa Fluor® 488 goat anti-rabbit IgG (H+L) used at a 1/1000 dilution for 1h. Alexa Fluor® 594 WGA was used to label plasma membranes (red) at a 1/200 dilution for 1h. DAPI was used to stain the cell nuclei (blue) at a concentration of 1.43µM.

Please note: All products are "FOR RESEARCH USE ONLY AND ARE NOT INTENDED FOR DIAGNOSTIC OR THERAPEUTIC USE"

Our Abpromise to you: Quality guaranteed and expert technical support

- Replacement or refund for products not performing as stated on the datasheet
- Valid for 12 months from date of delivery
- Response to your inquiry within 24 hours
- We provide support in Chinese, English, French, German, Japanese and Spanish
- Extensive multi-media technical resources to help you
- We investigate all quality concerns to ensure our products perform to the highest standards

If the product does not perform as described on this datasheet, we will offer a refund or replacement. For full details of the Abpromise, please visit <http://www.abcam.cn/abpromise> or contact our technical team.

Terms and conditions

- Guarantee only valid for products bought direct from Abcam or one of our authorized distributors