

Product datasheet

Anti-Importin 9 antibody [EPR1352] ab124710

重组 RabMAb

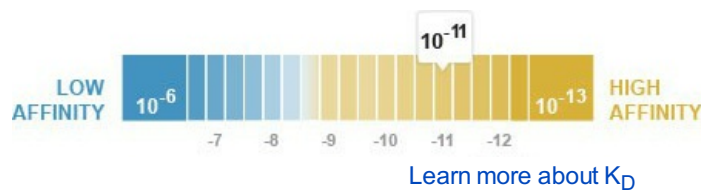
3 图像

概述

产品名称	Anti-Importin 9抗体[EPR1352]
描述	兔单克隆抗体[EPR1352] to Importin 9
经测试应用	适用于: WB, IHC-P, ICC 不适用于: Flow Cyt or IP
种属反应性	与反应: Mouse, Rat, Human
免疫原	Synthetic peptide corresponding to residues in Human Importin 9 protein (Q96P70).
阳性对照	HeLa, SKBR-3, C6, and NIH/3T3 cell lysates and Human brain tissue.
常规说明	This product is a recombinant rabbit monoclonal antibody. Our RabMAb [®] technology is a patented hybridoma-based technology for making rabbit monoclonal antibodies. For details on our patents, please refer to RabMAb[®] patents

性能

形式	Liquid
存放说明	Shipped at 4°C. Store at -20°C. Stable for 12 months at -20°C.
解离常数 (K_D)	K _D = 2.29 x 10 ⁻¹¹ M



存储溶液	PBS 49%,Sodium azide 0.01%,Glycerol 50%,BSA 0.05%
纯度	Tissue culture supernatant
克隆	单克隆
克隆编号	EPR1352
同种型	IgG

应用

Our [Abpromise guarantee](#) covers the use of **ab124710** in the following tested applications.

The application notes include recommended starting dilutions; optimal dilutions/concentrations should be determined by the end user.

应用	Ab评论	说明
WB		1/1000 - 1/10000. Predicted molecular weight: 116 kDa.
IHC-P		1/500 - 1/1000. Perform heat mediated antigen retrieval before commencing with IHC staining protocol.
ICC		1/250 - 1/500.

应用说明 Is unsuitable for Flow Cyt or IP.

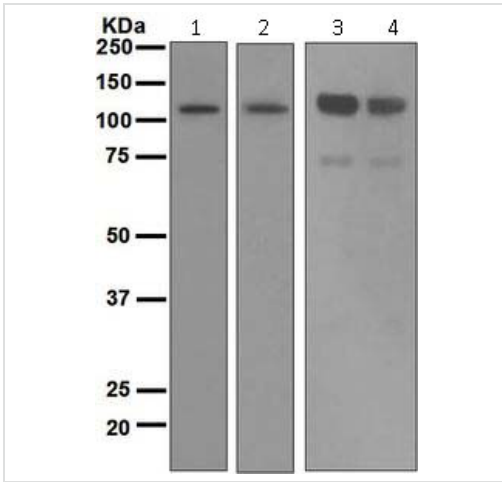
靶标

功能 Functions in nuclear protein import as nuclear transport receptor. Serves as receptor for nuclear localization signals (NLS) in cargo substrates. Is thought to mediate docking of the importin/substrate complex to the nuclear pore complex (NPC) through binding to nucleoporin and the complex is subsequently translocated through the pore by an energy requiring, Ran-dependent mechanism. At the nucleoplasmic side of the NPC, Ran binds to the importin, the importin/substrate complex dissociates and importin is re-exported from the nucleus to the cytoplasm where GTP hydrolysis releases Ran. The directionality of nuclear import is thought to be conferred by an asymmetric distribution of the GTP- and GDP-bound forms of Ran between the cytoplasm and nucleus (By similarity). Mediates the nuclear import of H2B histone (By similarity), RPS7 and RPL18A. Prevents the cytoplasmic aggregation of RPS7 and RPL18A by shielding exposed basic domains. May also import H2A, H3, H4 histones (By similarity), RPL4 and RPL6.

序列相似性 Belongs to the importin beta family.
Contains 1 importin N-terminal domain.

细胞定位 Cytoplasm. Nucleus.

图片



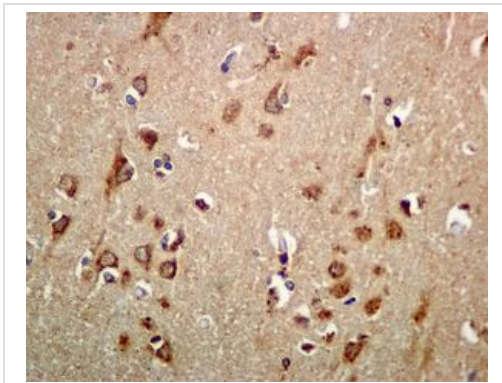
Western blot - Anti-Importin 9 antibody [EPR1352] (ab124710)

All lanes : Anti-Importin 9 antibody
[EPR1352] (ab124710) at 1/1000 dilution

- Lane 1 :** HeLa cell lysate
- Lane 2 :** SKBR-3 cell lysate
- Lane 3 :** C6 cell lysate
- Lane 4 :** NIH/3T3 cell lysate

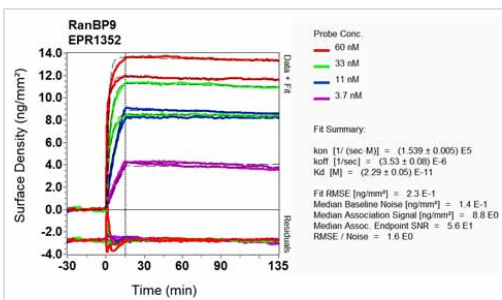
Lysates/proteins at 10 µg per lane.

Predicted band size : 116 kDa



Immunohistochemistry (Formalin/PFA-fixed paraffin-embedded sections) - Anti-Importin 9 antibody [EPR1352] (ab124710)

ab124710, at 1/500 to 1/1000, staining Importin 9 in Human brain tissue by immunohistochemistry [Paraffin Embedded Tissues (IHC-P)].



Other-Anti-Importin 9 antibody [EPR1352](ab124710)

Equilibrium dissociation constant (K_D)

Learn more about K_D

[Click here to learn more about \$K_D\$](#)

Please note: All products are "FOR RESEARCH USE ONLY AND ARE NOT INTENDED FOR DIAGNOSTIC OR THERAPEUTIC USE"

Our Abpromise to you: Quality guaranteed and expert technical support

- Replacement or refund for products not performing as stated on the datasheet

- Valid for 12 months from date of delivery
- Response to your inquiry within 24 hours

- We provide support in Chinese, English, French, German, Japanese and Spanish
- Extensive multi-media technical resources to help you
- We investigate all quality concerns to ensure our products perform to the highest standards

If the product does not perform as described on this datasheet, we will offer a refund or replacement. For full details of the Abpromise, please visit <http://www.abcam.cn/abpromise> or contact our technical team.

Terms and conditions

- Guarantee only valid for products bought direct from Abcam or one of our authorized distributors