

Product datasheet

Anti-IRS1 (phospho S1101) antibody ab55343

1 References 2 图像

概述

产品名称	Anti-IRS1 (phospho S1101)抗体
描述	兔多克隆抗体到 IRS1 (phospho S1101)
特异性	This antibody detects endogenous levels of IRS1 only when phosphorylated at serine 1101.
经测试应用	适用于: WB, ELISA, IHC-P
种属反应性	与反应: Human 预测可用于: Mouse, Rat
免疫原	Synthetic phosphopeptide derived from human IRS1 around the phosphorylation site of serine 1101 (H-S-S ^P -E-T).
阳性对照	Human colon carcinoma tissue, extracts from COS7 cells.

性能

形式	Liquid
存放说明	Shipped at 4°C. Store at -20°C. Stable for 12 months at -20°C.
存储溶液	Preservative: 0.02% Sodium Azide Constituents: 50% Glycerol, PBS, 150mM Sodium chloride, pH 7.4
纯度	Immunogen affinity purified
纯化说明	The antibody against non-phosphopeptide was removed by chromatography using non-phosphopeptide corresponding to the phosphorylation site.
克隆	多克隆
同种型	IgG

应用

Our [Abpromise guarantee](#) covers the use of **ab55343** in the following tested applications.

The application notes include recommended starting dilutions; optimal dilutions/concentrations should be determined by the end user.

应用	Ab评论	说明
WB		

应用	Ab评论	说明
----	------	----

ELISA

IHC-P

应用说明

ELISA: 1/5000.
 IHC-P: 1/50 - 1/100.
 WB: 1/500 - 1/1000. Detects a band of approximately 133 kDa (predicted molecular weight for Green monkey: 133 kDa).

Not yet tested in other applications.
 Optimal dilutions/concentrations should be determined by the end user.

靶标

功能

May mediate the control of various cellular processes by insulin. When phosphorylated by the insulin receptor binds specifically to various cellular proteins containing SH2 domains such as phosphatidylinositol 3-kinase p85 subunit or GRB2. Activates phosphatidylinositol 3-kinase when bound to the regulatory p85 subunit.

疾病相关

Polymorphisms in IRS1 may be involved in the etiology of non-insulin-dependent diabetes mellitus (NIDDM) [MIM:125853].

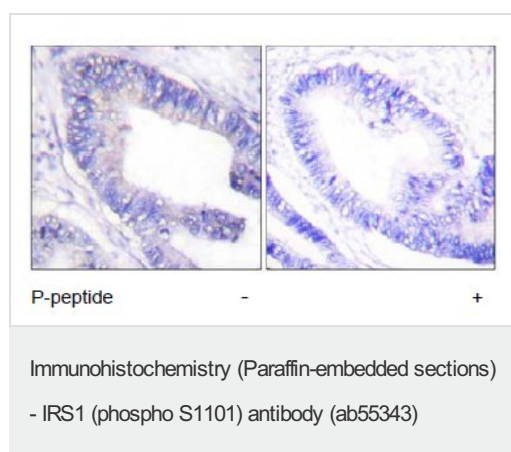
序列相似性

Contains 1 IRS-type PTB domain.
 Contains 1 PH domain.

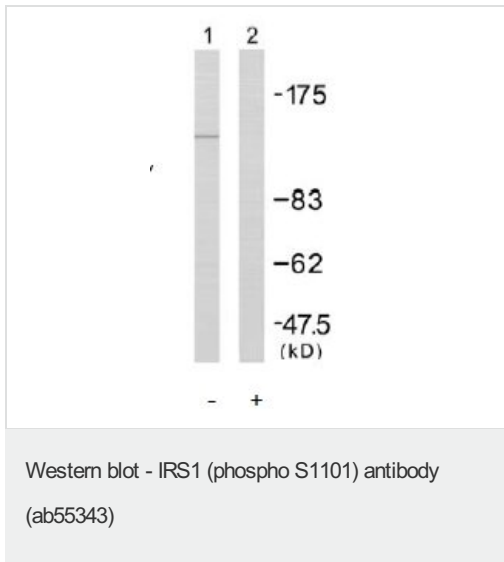
翻译后修饰

Serine phosphorylation of IRS1 is a mechanism for insulin resistance. Ser-312 phosphorylation inhibits insulin action through disruption of IRS1 interaction with the insulin receptor. Phosphorylation of Tyr-896 is required for GRB2-binding.

图片



This image shows human colon carcinoma tissue stained with ab55343 at 1/50 dilution. The left hand image shows untreated tissue; the right hand image shows tissue treated with the immunising phosphopeptide.



All lanes : Anti-IRS1 (phospho S1101) antibody (ab55343) at 1/500 dilution

Lane 1 : Extracts from COS7 cells treated with Calyculin A at 50ng/ml for 30 mins.

Lane 2 : Extracts from COS7 cells treated with Calyculin A at 50ng/ml for 30 mins and with the immunising phosphopeptide.

Predicted band size : 133 kDa

Observed band size : 133 kDa

Please note: All products are "FOR RESEARCH USE ONLY AND ARE NOT INTENDED FOR DIAGNOSTIC OR THERAPEUTIC USE"

Our Abpromise to you: Quality guaranteed and expert technical support

- Replacement or refund for products not performing as stated on the datasheet
- Valid for 12 months from date of delivery
- Response to your inquiry within 24 hours
- We provide support in Chinese, English, French, German, Japanese and Spanish
- Extensive multi-media technical resources to help you
- We investigate all quality concerns to ensure our products perform to the highest standards

If the product does not perform as described on this datasheet, we will offer a refund or replacement. For full details of the Abpromise, please visit <http://www.abcam.cn/abpromise> or contact our technical team.

Terms and conditions

- Guarantee only valid for products bought direct from Abcam or one of our authorized distributors