

Product datasheet

Anti-IMPG2 antibody ab82813

1 图像

概述

产品名称	Anti-IMPG2抗体
描述	兔多克隆抗体to IMPG2
宿主	Rabbit
经测试应用	适用于: WB, ELISA
种属反应性	与反应: Human 预测可用于: Mouse, Rat, Rabbit, Horse, Chicken, Guinea pig, Cow, Cat, Dog, Zebrafish
免疫原	Synthetic peptide corresponding to a region within internal amino acids 900-949 (VVFFSLRVTNMMFSEDLFNKNSLEYKALEQRFLLELLVPYLQSNLTGFQNL) of Human IMPG2 (NP_057331). Run BLAST with Run BLAST with
阳性对照	293T cell lysate

性能

形式	Liquid
存放说明	Shipped at 4°C. Upon delivery aliquot and store at -20°C. Avoid freeze / thaw cycles.
存储溶液	Preservative: None Constituents: 2% Sucrose, PBS
纯度	Immunogen affinity purified
纯化说明	Purified by peptide affinity chromatography method.
克隆	多克隆
同种型	IgG

应用

Our [Abpromise guarantee](#) covers the use of **ab82813** in the following tested applications.

The application notes include recommended starting dilutions; optimal dilutions/concentrations should be determined by the end user.

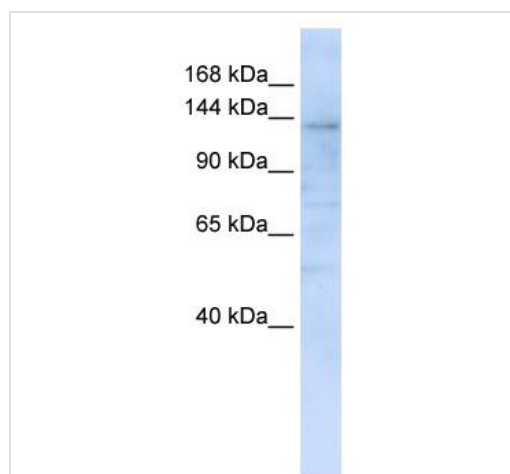
应用	Ab评论	说明
WB		Use a concentration of 1 µg/ml. Predicted molecular weight: 139 kDa. Good results were obtained when blocked with 5% non-fat dry milk in 0.05% PBS-T.
ELISA		Use at an assay dependent concentration. ELISA titre using peptide based assay 1:62500.

靶标

相关性 IMPG2 (Interphotoreceptor matrix proteoglycan 2) is part of an extracellular complex occupying the interface between photoreceptors and the retinal pigment epithelium in the fundus of the eye. IMPG2 is part of an extracellular complex occupying the interface between photoreceptors and the retinal pigment epithelium in the fundus of the eye.

细胞定位 Membrane; Single pass type I membrane protein

图片



Anti-IMPG2 antibody (ab82813) at 1 µg/ml (in 5% skim milk / PBS buffer) + 293T cell lysate at 10 µg

Secondary

HRP conjugated anti-Rabbit IgG at 1/50000 dilution

Predicted band size: 139 kDa

Observed band size: 139 kDa

Western blot - Anti-IMPG2 antibody (ab82813)

Please note: All products are "FOR RESEARCH USE ONLY AND ARE NOT INTENDED FOR DIAGNOSTIC OR THERAPEUTIC USE"

Our Abpromise to you: Quality guaranteed and expert technical support

- Replacement or refund for products not performing as stated on the datasheet
- Valid for 12 months from date of delivery
- Response to your inquiry within 24 hours
- We provide support in Chinese, English, French, German, Japanese and Spanish
- Extensive multi-media technical resources to help you
- We investigate all quality concerns to ensure our products perform to the highest standards

If the product does not perform as described on this datasheet, we will offer a refund or replacement. For full details of the Abpromise, please visit <http://www.abcam.cn/abpromise> or contact our technical team.

Terms and conditions

- Guarantee only valid for products bought direct from Abcam or one of our authorized distributors