

## Product datasheet

# Human MMP13 ELISA Kit ab100605

★★★★☆ 1 Abreviews 4 References 2 图像

### 概述

**产品名称** 人MMP13 ELISA试剂盒

**检测方法** Colorimetric

**精确度**

批次内				
样品	n	Mean	SD	CV%
Overall				< 10%

批次间				
样品	n	Mean	SD	CV%
Overall				< 12%

**样品类型** Cell culture supernatant, Plasma

**检测类型** Sandwich (quantitative)

**灵敏度** < 6 pg/ml

**范围** 8.23 pg/ml - 6000 pg/ml

**复检** 93 %

特定样本复检结果

样品类型	平均%	范围
Cell culture supernatant	94.72	84% - 103%
Plasma	93.13	83% - 103%

**实验步骤** Multiple steps standard assay

**种属反应性** 与反应: Human

**产品概述** Abcam's MMP13 Human ELISA (Enzyme-Linked Immunosorbent Assay) kit is an *in vitro* enzyme linked immunosorbent assay for the quantitative measurement of Human MMP13 in plasma and cell culture supernatants.

This assay employs an antibody specific for Human MMP13 coated on a 96-well plate.

Standards and samples are pipetted into the wells and MMP13 present in a sample is bound to the wells by the immobilized antibody. The wells are washed and biotinylated anti-Human MMP13 antibody is added. After washing away unbound biotinylated antibody, HRP-conjugated streptavidin is pipetted to the wells. The wells are again washed, a TMB substrate solution is added to the wells and color develops in proportion to the amount of MMP13 bound. The Stop Solution changes the color from blue to yellow, and the intensity of the color is measured at 450 nm.

The kit detects total MMP-13 levels.

We have not been able to detect endogenous Human MMP13 in normal serum with ab100605, only in serum spiked with Human MMP13.

#### 说明

Optimisation may be required with urine samples.

#### 经测试应用

适用于: Sandwich ELISA

#### 平台

Microplate

#### 性能

#### 存放说明

Store at -20°C. Please refer to protocols.

组件	1 x 96 tests
20X Wash Buffer Concentrate	1 x 25ml
5X Assay Diluent	1 x 15ml
700X HRP-Streptavidin Concentrate	1 x 200µl
Biotinylated anti-Human MMP13 (lyophilized)	2 vials
MMP13 Microplate (12 x 8 wells)	1 unit
Recombinant Human MMP13 Standard	2 vials
Stop Solution	1 x 8ml
TMB One-Step Substrate Reagent	1 x 12ml

#### 功能

Degrades collagen type I. Does not act on gelatin or casein. Could have a role in tumoral process.

#### 组织特异性

Seems to be specific to breast carcinomas.

#### 疾病相关

Defects in MMP13 are the cause of spondyloepimetaphyseal dysplasia Missouri type (SEMD-MO) [MIM:602111]. A bone disease characterized by moderate to severe metaphyseal changes, mild epiphyseal involvement, rhizomelic shortening of the lower limbs with bowing of the femora and/or tibiae, coxa vara, genu varum and pear-shaped vertebrae in childhood. Epimetaphyseal changes improve with age.

Defects in MMP13 are the cause of metaphyseal anadysplasia type 1 (MANDP1) [MIM:602111]. Metaphyseal anadysplasia consists of an abnormal bone development characterized by severe skeletal changes that, in contrast with the progressive course of most other skeletal dysplasias,

resolve spontaneously with age. Clinical characteristics are evident from the first months of life and include slight shortness of stature and a mild varus deformity of the legs. Patients attain a normal stature in adolescence and show improvement or complete resolution of varus deformity of the legs and rhizomelic micromelia.

#### 序列相似性

Belongs to the peptidase M10A family.  
Contains 4 hemopexin-like domains.

#### 结构域

The conserved cysteine present in the cysteine-switch motif binds the catalytic zinc ion, thus inhibiting the enzyme. The dissociation of the cysteine from the zinc ion upon the activation-peptide release activates the enzyme.

#### 细胞定位

Secreted > extracellular space > extracellular matrix.

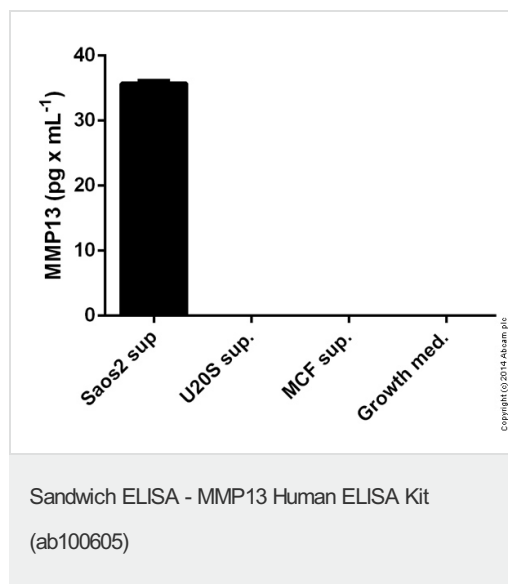
#### 应用

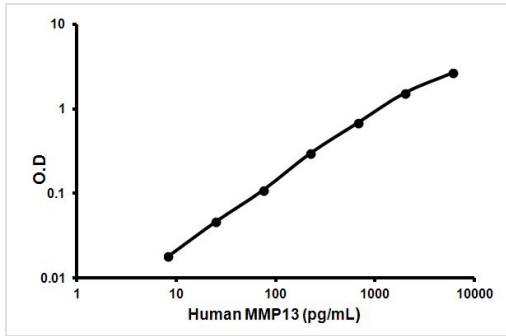
Our [Abpromise guarantee](#) covers the use of **ab100605** in the following tested applications.

The application notes include recommended starting dilutions; optimal dilutions/concentrations should be determined by the end user.

应用	Ab评论	说明
Sandwich ELISA		Use at an assay dependent concentration.

#### 图片





Representative standard curve using  
ab100605

Typical Standard Curve

**Please note:** All products are "FOR RESEARCH USE ONLY AND ARE NOT INTENDED FOR DIAGNOSTIC OR THERAPEUTIC USE"

### Our Abpromise to you: Quality guaranteed and expert technical support

- Replacement or refund for products not performing as stated on the datasheet
- Valid for 12 months from date of delivery
- Response to your inquiry within 24 hours
- We provide support in Chinese, English, French, German, Japanese and Spanish
- Extensive multi-media technical resources to help you
- We investigate all quality concerns to ensure our products perform to the highest standards

If the product does not perform as described on this datasheet, we will offer a refund or replacement. For full details of the Abpromise, please visit <http://www.abcam.cn/abpromise> or contact our technical team.

### Terms and conditions

- Guarantee only valid for products bought direct from Abcam or one of our authorized distributors