

Product datasheet

Anti-Human IgG antibody [EPR4421] ab109489

RabMAb

★★★★★ 3 Abreviews 8 References 7 图像

概述

产品名称	抗人IgG抗体[EPR4421]
描述	兔单克隆抗体[EPR4421] 到人IgG
宿主	Rabbit
特异性	ab109489 recognizes all four Human IgG isotypes (IgG1, IgG2, IgG3, and IgG4).
经测试应用	适用于: WB, IHC-P
种属反应性	与反应: Human
免疫原	Synthetic peptide (the amino acid sequence is considered to be commercially sensitive) within Human Human IgG aa 150-250 (internal sequence). The exact sequence is proprietary.
阳性对照	WB: Human IgG2, IgG1, IgG3, and IgG4 recombinant proteins, human fetal thymus, fetal tonsil and fetal spleen tissue lysates. IHC-P: Human tonsil and stomach tissues.
常规说明	<p>Mouse, Rat: We have preliminary internal testing data to indicate this antibody may not react with these species. Please contact us for more information.</p> <p>Our RabMAb[®] technology is a patented hybridoma-based technology for making rabbit monoclonal antibodies. For details on our patents, please refer to RabMAb[®] patents</p> <p>We are constantly working hard to ensure we provide our customers with best in class antibodies. As a result of this work we are pleased to now offer this antibody in purified format. We are in the process of updating our datasheets. The purified format is designated 'PUR' on our product labels. If you have any questions regarding this update, please contact our Scientific Support team.</p> <p>This product is a recombinant rabbit monoclonal antibody.</p>

性能

形式	Liquid
存放说明	Shipped at 4°C. Store at +4°C short term (1-2 weeks). Upon delivery aliquot. Store at -20°C. Stable for 12 months at -20°C.
存储溶液	<p>pH: 7.20</p> <p>Preservative: 0.01% Sodium azide</p> <p>Constituents: 40% Glycerol, 59% PBS, 0.05% BSA</p>
纯度	Protein A purified

克隆	单克隆
克隆编号	EPR4421
同种型	IgG

应用

Our [Abpromise guarantee](#) covers the use of **ab109489** in the following tested applications.

The application notes include recommended starting dilutions; optimal dilutions/concentrations should be determined by the end user.

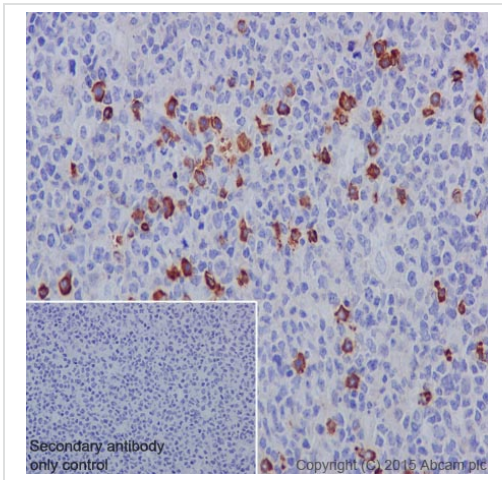
应用	Ab评论	说明
WB		1/1000 - 1/10000. Detects a band of approximately 52-58 kDa.
IHC-P	★★★★★	1/300 - 1/1000. Perform heat mediated antigen retrieval before commencing with IHC staining protocol. See protocols (link: http://www.abcam.com/protocols/ihc-antigen-retrieval-protocol).

靶标

相关性 IgG is a monomeric immunoglobulin, built of two heavy chains gamma and two light chains. Each molecule has two antigen binding sites. This is the most abundant immunoglobulin and is approximately equally distributed in blood and in tissue liquids, constituting 75% of serum immunoglobulins in humans. This is the only isotype that can pass through the human placenta, thereby providing protection to the fetus in its first weeks of life before its own immune system has developed. It can bind to many kinds of pathogens, for example viruses, bacteria, and fungi, and protects the body against them by complement activation (classic pathway), opsonization for phagocytosis and neutralisation of their toxins. There are 4 subclasses: IgG1 (66%), IgG2 (23%), IgG3 (7%) and IgG4 (4%).

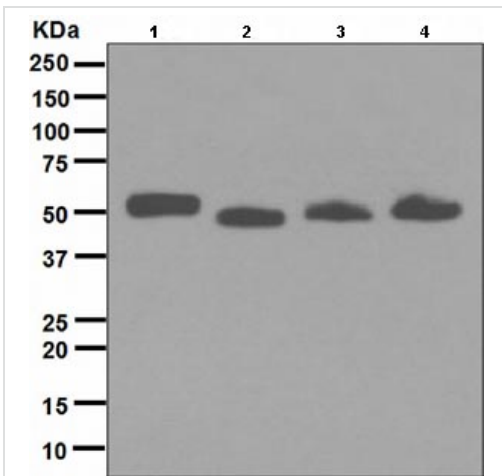
细胞定位 Secreted

图片



Immunohistochemistry (Formalin/PFA-fixed paraffin-embedded sections) analysis of human tonsil tissue labelling Human IgG with purified ab109489 at 1/300. Heat mediated antigen retrieval was performed using Tris/EDTA buffer pH 9. [ab97051](#), a HRP-conjugated goat anti-rabbit IgG (H+L) was used as the secondary antibody (1/500). Negative control using PBS instead of primary antibody. Counterstained with hematoxylin.

Immunohistochemistry (Formalin/PFA-fixed paraffin-embedded sections) - Anti-Human IgG antibody [EPR4421] (ab109489)



All lanes : Anti-Human IgG antibody [EPR4421] (ab109489) at 1/1000 dilution (unpurified)

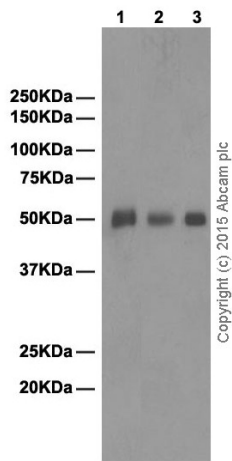
Lane 1 : IgG2 recombinant protein (10 ng protein loaded)

Lane 2 : IgG1 recombinant protein (10 ng protein loaded)

Lane 3 : IgG3 recombinant protein (10 ng protein loaded)

Lane 4 : IgG4 recombinant protein (10 ng protein loaded)

Western blot - Anti-Human IgG antibody [EPR4421] (ab109489)



Western blot - Anti-Human IgG antibody [EPR4421] (ab109489)

All lanes : Anti-Human IgG antibody [EPR4421] (ab109489) at 1/20000 dilution (purified)

Lane 1 : Human fetal thymus tissue lysate

Lane 2 : Human fetal tonsil tissue lysate

Lane 3 : Human fetal spleen tissue lysate

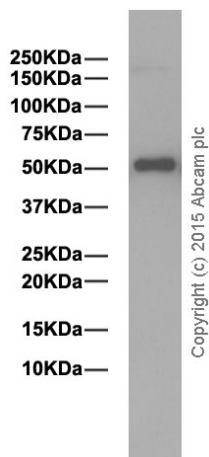
Lysates/proteins at 20 µg per lane.

Secondary

All lanes : Goat Anti-Rabbit IgG H&L (HRP) (ab97051) at 1/50000 dilution

Observed band size: 50 kDa

Blocking and dilution buffer: 5% NFDm/TBST.



Western blot - Anti-Human IgG antibody [EPR4421] (ab109489)

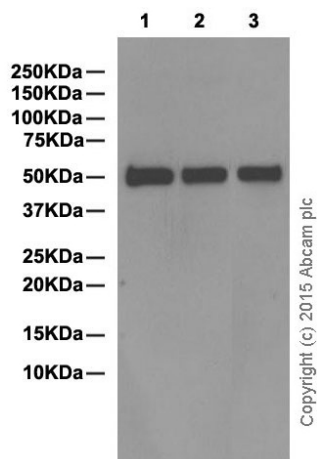
Anti-Human IgG antibody [EPR4421] (ab109489) at 1/1000 dilution (purified) + IgG3 recombinant protein at 0.01 µg

Secondary

Goat Anti-Rabbit IgG H&L (HRP) (ab97051) at 1/50000 dilution

Observed band size: 50 kDa

Blocking and dilution buffer: 5% NFDm/TBST.



Western blot - Anti-Human IgG antibody [EPR4421] (ab109489)

All lanes : Anti-Human IgG antibody [EPR4421] (ab109489) at 1/5000 dilution (purified)

Lane 1 : IgG1 recombinant protein

Lane 2 : IgG2 recombinant protein

Lane 3 : IgG4 recombinant protein

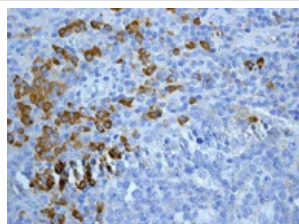
Lysates/proteins at 0.01 µg per lane.

Secondary

All lanes : Goat Anti-Rabbit IgG H&L (HRP) (ab97051) at 1/50000 dilution

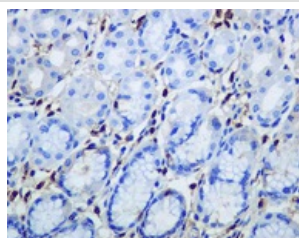
Observed band size: 50 kDa

Blocking and dilution buffer: 5% NFDm/TBST.



Immunohistochemistry (Formalin/PFA-fixed paraffin-embedded sections) - Anti-Human IgG antibody [EPR4421] (ab109489)

Immunohistochemistry (Formalin/PFA-fixed paraffin-embedded sections) analysis of human tonsil tissue labelling IgG with unpurified ab109489 at a dilution of 1/500.



Immunohistochemistry (Formalin/PFA-fixed paraffin-embedded sections) - Anti-Human IgG antibody [EPR4421] (ab109489)

Immunohistochemistry (Formalin/PFA-fixed paraffin-embedded sections) analysis of human stomach tissue labelling IgG with unpurified ab109489 at a dilution of 1/500.

Our Abpromise to you: Quality guaranteed and expert technical support

- Replacement or refund for products not performing as stated on the datasheet
- Valid for 12 months from date of delivery
- Response to your inquiry within 24 hours

- We provide support in Chinese, English, French, German, Japanese and Spanish
- Extensive multi-media technical resources to help you
- We investigate all quality concerns to ensure our products perform to the highest standards

If the product does not perform as described on this datasheet, we will offer a refund or replacement. For full details of the Abpromise, please visit <http://www.abcam.cn/abpromise> or contact our technical team.

Terms and conditions

- Guarantee only valid for products bought direct from Abcam or one of our authorized distributors