


Product datasheet

Anti-HMGB2 antibody ab113929

3 图像

概述

产品名称	Anti-HMGB2抗体
描述	兔多克隆抗体to HMGB2
宿主	Rabbit
经测试应用	适用于: IHC-P, ICC/IF, WB
种属反应性	与反应: Human 预测可用于: Mouse, Rabbit, Horse, Cow, Dog, Chimpanzee, Macaque monkey, Gorilla, Chinese hamster, Orangutan 
免疫原	Synthetic peptide conjugated to KLH derived from within residues 150 to the C-terminus of Human HMGB2. 参阅Abcam的专有抗源政策
阳性对照	This antibody gave a positive signal in HeLa Nuclear lysate as well as the following whole cell lysates: HepG2; U20S; A549; MCF7; K562. This antibody gave a positive result in IF in the following methanol fixed cell lines: HepG2 It also gave a positive result in FFPE human kidney RCC tissue sections

性能

形式	Liquid
存放说明	Shipped at 4°C. Store at +4°C short term (1-2 weeks). Upon delivery aliquot. Store at -20°C or -80°C. Avoid freeze / thaw cycle.
存储溶液	pH: 7.40 Preservative: 0.02% Sodium azide Constituent: PBS Note: Batches of this product that have a concentration < 1mg/ml may have BSA added as a stabilising agent. If you would like information about the formulation of a specific lot, please contact our scientific support team who will be happy to help.
纯度	Immunogen affinity purified
克隆	多克隆
同种型	IgG

应用

Our [Abpromise guarantee](#) covers the use of **ab113929** in the following tested applications.

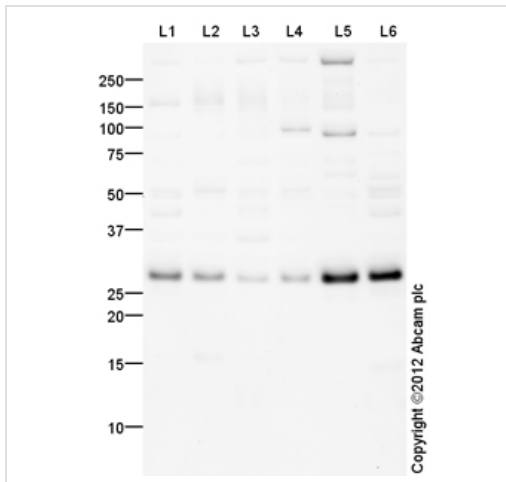
The application notes include recommended starting dilutions; optimal dilutions/concentrations should be determined by the end user.

应用	Ab评论	说明
IHC-P		Use a concentration of 5 µg/ml. Perform heat mediated antigen retrieval before commencing with IHC staining protocol.
ICC/IF		Use a concentration of 5 µg/ml.
WB		Use a concentration of 1 µg/ml. Detects a band of approximately 28 kDa (predicted molecular weight: 24 kDa).

靶标

功能	DNA binding proteins that associates with chromatin and has the ability to bend DNA. Binds preferentially single-stranded DNA. Involved in V(D)J recombination by acting as a cofactor of the RAG complex. Acts by stimulating cleavage and RAG protein binding at the 23 bp spacer of conserved recombination signal sequences (RSS).
序列相似性	Belongs to the HMGB family. Contains 2 HMG box DNA-binding domains.
细胞定位	Nucleus. Chromosome.

图片



Western blot - Anti-HMGB2 antibody (ab113929)

All lanes : Anti-HMGB2 antibody (ab113929)
at 1 µg/ml

Lane 1 : HepG2 (Human hepatocellular liver carcinoma cell line) Whole Cell Lysate

Lane 2 : U2OS (Human osteosarcoma cell line) Whole Cell Lysate

Lane 3 : A549 (Human lung adenocarcinoma epithelial cell line) Whole Cell Lysate

Lane 4 : MCF7 (Human breast adenocarcinoma cell line) Whole Cell Lysate

Lane 5 : HeLa (Human epithelial carcinoma cell line) Nuclear Lysate

Lane 6 : K562 (Human erythromyeloblastoid leukemia cell line) Whole Cell Lysate

Lysates/proteins at 10 µg per lane.

Secondary

All lanes : Goat Anti-Rabbit IgG H&L (HRP) preadsorbed (ab97080) at 1/5000 dilution

Developed using the ECL technique.

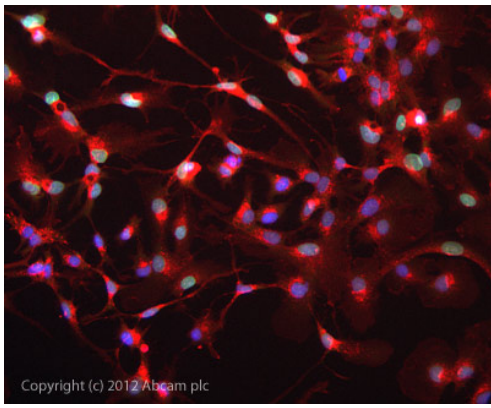
Performed under reducing conditions.

Predicted band size: 24 kDa

Observed band size: 28 kDa

Additional bands at: 100 kDa, 300 kDa, 50 kDa. We are unsure as to the identity of these extra bands.

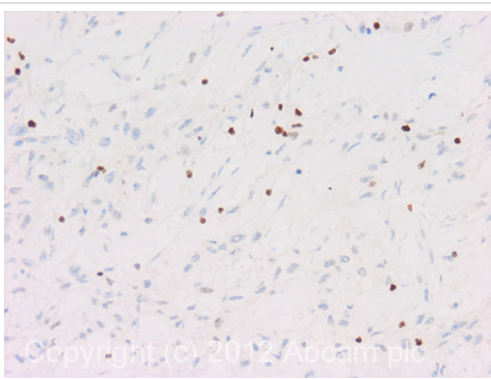
Exposure time: 8 minutes



Copyright (c) 2012 Abcam plc

Immunocytochemistry/ Immunofluorescence - Anti-HMGB2 antibody (ab113929)

ICC/IF image of ab113929 stained HepG2 cells. The cells were 100% methanol fixed (5 min) and then incubated in 1%BSA / 10% normal goat serum / 0.3M glycine in 0.1% PBS-Tween for 1h to permeabilise the cells and block non-specific protein-protein interactions. The cells were then incubated with the antibody ab113929 at 5µg/ml overnight at +4°C. The secondary antibody (green) was DyLight® 488 goat anti- rabbit (ab96899) IgG (H+L) used at a 1/1000 dilution for 1h. Alexa Fluor® 594 WGA was used to label plasma membranes (red) at a 1/200 dilution for 1h. DAPI was used to stain the cell nuclei (blue) at a concentration of 1.43µM.



Copyright (c) 2012 Abcam plc

Immunohistochemistry (Formalin/PFA-fixed paraffin-embedded sections) - Anti-HMGB2 antibody (ab113929)

IHC image of ab113929 staining in human kidney RCC formalin fixed paraffin embedded tissue section, performed on a Leica Bond™ system using the standard protocol F. The section was pre-treated using heat mediated antigen retrieval with sodium citrate buffer (pH6, epitope retrieval solution 1) for 20 mins. The section was then incubated with ab113929, 5µg/ml, for 15 mins at room temperature and detected using an HRP conjugated compact polymer system. DAB was used as the chromogen. The section was then counterstained with haematoxylin and mounted with DPX.

For other IHC staining systems (automated and non-automated) customers should optimize variable parameters such as antigen retrieval conditions, primary antibody concentration and antibody incubation times.

Please note: All products are "FOR RESEARCH USE ONLY AND ARE NOT INTENDED FOR DIAGNOSTIC OR THERAPEUTIC USE"

Our Abpromise to you: Quality guaranteed and expert technical support

- Replacement or refund for products not performing as stated on the datasheet

- Valid for 12 months from date of delivery
- Response to your inquiry within 24 hours

- We provide support in Chinese, English, French, German, Japanese and Spanish
- Extensive multi-media technical resources to help you
- We investigate all quality concerns to ensure our products perform to the highest standards

If the product does not perform as described on this datasheet, we will offer a refund or replacement. For full details of the Abpromise, please visit <http://www.abcam.cn/abpromise> or contact our technical team.

Terms and conditions

- Guarantee only valid for products bought direct from Abcam or one of our authorized distributors