


Product datasheet

Anti-HLA G antibody [MEM-G/9] ab7758

★★★★★ 3 Abreviews 13 References 2 图像

概述

产品名称	Anti-HLA G抗体[MEM-G/9]
描述	小鼠单克隆抗体[MEM-G/9] to HLA G
宿主	Mouse
特异性	Reacts with the native form of human HLA-G on the cell surface as well as with soluble HLA-G molecule in its beta 2-microglobulin associated form. Specificity was demonstrated with cells transfected with either full-length HLA-G and HLA-G1 complementary DNA. This antibody does not compete with a tested panel of other monoclonal antibodies to HLA-G. We have data to indicate that this antibody may not cross react with Mouse. However, this has not been conclusively tested and expression levels may vary in certain cell lines/tissues.
经测试应用	适用于: ICC/IF, IHC-Fr, WB, ELISA, Flow Cyt 不适用于: IHC-P
种属反应性	与反应: Human 预测可用于: Non human primates 
免疫原	Recombinant full length protein corresponding to Human HLA G.

性能

形式	Liquid
存放说明	Shipped at 4°C. Store at +4°C short term (1-2 weeks). Upon delivery aliquot. Store at -20°C or -80°C. Avoid freeze / thaw cycle.
存储溶液	Preservative: 15mM Sodium Azide Constituents: PBS, pH 7.4
纯度	>95% by SDS-PAGE
克隆	单克隆
克隆编号	MEM-G/9
同种型	IgG1

应用

Our [Abpromise guarantee](#) covers the use of **ab7758** in the following tested applications.

The application notes include recommended starting dilutions; optimal dilutions/concentrations should be determined by the end user.

应用	Ab评论	说明
ICC/IF	★★★★★	Use at an assay dependent concentration. Do not fix cells, see Menier et al.
IHC-Fr		Use at an assay dependent concentration.
WB	★★★★☆	1/2000. The antibody MEM-G/9 reacts both with cell surface and soluble form of HLA-G, but is not suitable for standard WB as it detects native antigen.
ELISA		1/100 - 1/2500. See Abreview.
Flow Cyt	★★★★★	Use at an assay dependent concentration. Do not fix cells, see Menier et al. ab170190 - Mouse monoclonal IgG1, is suitable for use as an isotype control with this antibody.

应用说明 Is unsuitable for IHC-P.

靶标

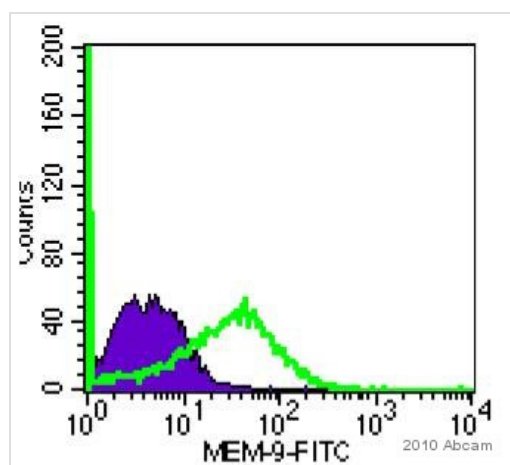
功能 Involved in the presentation of foreign antigens to the immune system. Plays a role in maternal tolerance of the fetus by mediating protection from the deleterious effects of natural killer cells, cytotoxic T lymphocytes, macrophages and mononuclear cells.

组织特异性 Expressed in trophoblasts.

序列相似性 Belongs to the MHC class I family.
Contains 1 Ig-like C1-type (immunoglobulin-like) domain.

细胞定位 Membrane.

图片

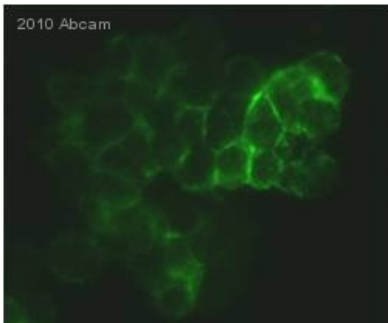


ab7758 staining HLA G in Human JEG-3 cells by Flow Cytometry. The sample was incubated with the primary antibody, (1/50), for 1 hour. Ab6785(1/100) was used as secondary antibody.

Gating Strategy: Isotope control

Flow Cytometry - Anti-HLA G antibody [MEM-G/9]
(ab7758)

This image is courtesy of an anonymous Abreview



Immunocytochemistry/ Immunofluorescence - Anti-
HLA G antibody [MEM-G/9] (ab7758)

This image is courtesy of an anonymous Abreview

ab7758 staining HLA G in Human JEG-3 cells
by ICC/IF

(Immunocytochemistry/immunofluorescence).

Cells were blocked with 10% serum for 45
minutes at 24°C. Samples were incubated
with primary antibody (1/50) for 1 hour at
24°C. [ab6785](#) (1/100) was used as the
secondary antibody.

Please note: All products are "FOR RESEARCH USE ONLY AND ARE NOT INTENDED FOR DIAGNOSTIC OR THERAPEUTIC USE"

Our Abpromise to you: Quality guaranteed and expert technical support

- Replacement or refund for products not performing as stated on the datasheet
- Valid for 12 months from date of delivery
- Response to your inquiry within 24 hours
- We provide support in Chinese, English, French, German, Japanese and Spanish
- Extensive multi-media technical resources to help you
- We investigate all quality concerns to ensure our products perform to the highest standards

If the product does not perform as described on this datasheet, we will offer a refund or replacement. For full details of the Abpromise, please visit <http://www.abcam.cn/abpromise> or contact our technical team.

Terms and conditions

- Guarantee only valid for products bought direct from Abcam or one of our authorized distributors