

## Product datasheet

# Anti-HIV1 Rev antibody [10] ab25871

1 References 1 图像

### 概述

产品名称	Anti-HIV1 Rev抗体[10]
描述	小鼠单克隆抗体[10] to HIV1 Rev
特异性	HIV1 Rev regulatory protein.
经测试应用	<b>适用于:</b> ELISA, WB, Radioimmunoprecipitation
种属反应性	Reacts with HIV1. Not yet tested in other species.
免疫原	To produce this antibody the recombinant Rev (strain BRU) has been used as immunogen. The peptide sequences were not derived from particular strains of HIV1, but were designed as (artificial) B-clade (strain) consensus sequences. Sequences in Swiss prot belong to particular HIV1 strains. For epitope mapping synthetic peptides were used. <a href="#">Run BLAST with ExPASy</a> <a href="#">Run BLAST with NCBI</a>
表位	Epitope mapped to aa34-40

### 性能

形式	Liquid
存放说明	Shipped at 4°C. Upon delivery aliquot and store at -20°C or -80°C. Avoid repeated freeze / thaw cycles.
存储溶液	Preservative: 0.1% Sodium Azide Constituents: PBS, pH 7.4
纯度	Protein G purified
克隆	单克隆
克隆编号	10
同种型	IgG1

### 应用

Our [Abpromise guarantee](#) covers the use of **ab25871** in the following tested applications.

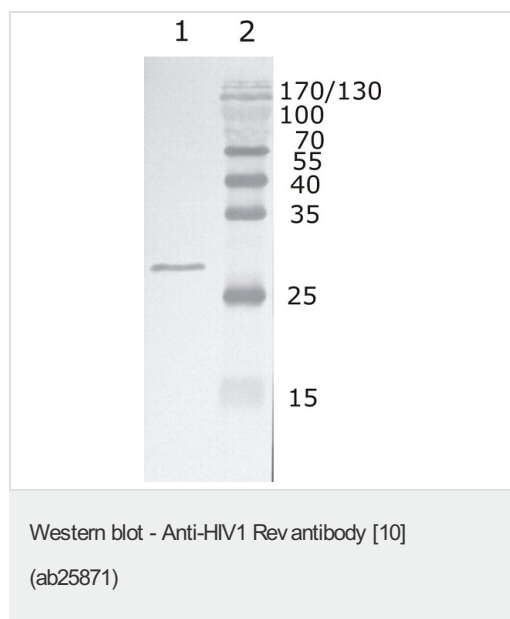
The application notes include recommended starting dilutions; optimal dilutions/concentrations should be determined by the end user.

应用	Ab评论	说明
ELISA		1/10000.
WB		1/500. Predicted molecular weight: 13 kDa.
Radioimmunoprecipitation		Use at an assay dependent dilution.

## 靶标

**相关性** HIV1 expresses the trans-activator protein Rev which is required for virus growth as it promotes the localisation and expression of viral RNA in the cytoplasm. Rev is a model experimental system for studying nuclear transport. The HIV1 Rev protein as viral protein is expressed early in the virus life cycle and thus may be important targets for the immune control of HIV1 infection.

## 图片



**Lane 1 :** Anti-HIV1 Rev antibody [10] (ab25871)

**Lane 2 :**

**Lane 1 :** Recombinant HIV1 Rev (B subtype)

**Lane 2 :** Protein size marker

**Predicted band size :** 13 kDa

**Please note:** All products are "FOR RESEARCH USE ONLY AND ARE NOT INTENDED FOR DIAGNOSTIC OR THERAPEUTIC USE"

## Our Abpromise to you: Quality guaranteed and expert technical support

- Replacement or refund for products not performing as stated on the datasheet
- Valid for 12 months from date of delivery
- Response to your inquiry within 24 hours
- We provide support in Chinese, English, French, German, Japanese and Spanish
- Extensive multi-media technical resources to help you
- We investigate all quality concerns to ensure our products perform to the highest standards

If the product does not perform as described on this datasheet, we will offer a refund or replacement. For full details of the Abpromise,

please visit <http://www.abcam.cn/abpromise> or contact our technical team.

## Terms and conditions

---

- Guarantee only valid for products bought direct from Abcam or one of our authorized distributors