

Product datasheet

Anti-HEC1 antibody ab117415

3 图像

概述

产品名称	Anti-HEC1抗体
描述	山羊多克隆抗体to HEC1
宿主	Goat
经测试应用	适用于: WB, ELISA, IHC-P
种属反应性	与反应: Human
免疫原	Synthetic peptide: YEKKATLIKSSEE with a Cysteine residue linker, corresponding to C terminal amino acids 630-642 of Human HEC1 (NP_006092.1).  <a href="#">Run BLAST with</a> <a href="#">Run BLAST with</a>
阳性对照	Human adrenal and liver tissues; HeLa cell lysate.

性能

形式	Liquid
存放说明	Shipped at 4°C. Upon delivery aliquot and store at -20°C. Avoid freeze / thaw cycles.
存储溶液	pH: 7.30 Preservative: 0.02% Sodium azide Constituents: 99% Tris buffered saline, 0.5% BSA
纯度	Protein G purified
克隆	多克隆
同种型	IgG

应用

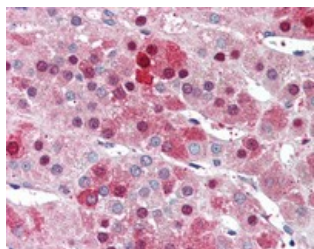
Our [Abpromise guarantee](#) covers the use of **ab117415** in the following tested applications.  
The application notes include recommended starting dilutions; optimal dilutions/concentrations should be determined by the end user.

应用	Ab评论	说明
WB		Use a concentration of 0.5 - 2 µg/ml. Predicted molecular weight: 74 kDa.
ELISA		1/32000.
IHC-P		Use a concentration of 5 µg/ml. Perform heat mediated antigen retrieval with citrate buffer pH 6 before commencing with IHC staining protocol.

## 靶标

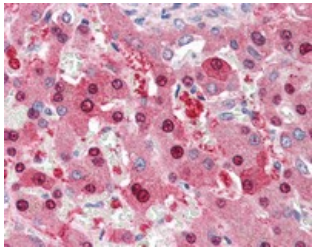
<b>功能</b>	Acts as a component of the essential kinetochore-associated NDC80 complex, which is required for chromosome segregation and spindle checkpoint activity. Required for kinetochore integrity and the organization of stable microtubule binding sites in the outer plate of the kinetochore.
<b>序列相似性</b>	Belongs to the NDC80/HEC1 family.
<b>发展阶段</b>	Expression peaks in mitosis.
<b>翻译后修饰</b>	Phosphorylation begins in S phase of the cell cycle and peaks in mitosis. Phosphorylated by NEK2. May also be phosphorylated by AURKA and AURKB.
<b>细胞定位</b>	Nucleus. Chromosome > centromere > kinetochore. Localizes to kinetochores from late prophase to anaphase. Localizes specifically to the outer plate of the kinetochore.

## 图片



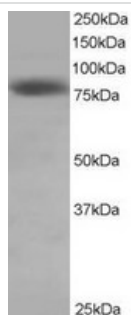
ab117415, at 5 ug/ml staining HEC1 in Formalin-fixed, Paraffin-embedded Human adrenal tissue by Immunohistochemistry followed by biotinylated secondary antibody, alkaline phosphatase-streptavidin and chromogen.

Immunohistochemistry (Formalin/PFA-fixed paraffin-embedded sections) - Anti-HEC1 antibody (ab117415)



Immunohistochemistry (Formalin/PFA-fixed paraffin-embedded sections) - Anti-HEC1 antibody (ab117415)

ab117415, at 5 ug/ml staining HEC1 in Formalin-fixed, Paraffin-embedded Human liver tissue by Immunohistochemistry followed by biotinylated secondary antibody, alkaline phosphatase-streptavidin and chromogen.



Western blot - Anti-HEC1 antibody (ab117415)

Anti-HEC1 antibody (ab117415) at 0.5 µg/ml + HeLa cell lysate in RIPA buffer at 35 µg

Developed using the ECL technique.

**Predicted band size: 74 kDa**

**Please note:** All products are "FOR RESEARCH USE ONLY AND ARE NOT INTENDED FOR DIAGNOSTIC OR THERAPEUTIC USE"

### Our Abpromise to you: Quality guaranteed and expert technical support

- Replacement or refund for products not performing as stated on the datasheet
- Valid for 12 months from date of delivery
- Response to your inquiry within 24 hours
- We provide support in Chinese, English, French, German, Japanese and Spanish
- Extensive multi-media technical resources to help you
- We investigate all quality concerns to ensure our products perform to the highest standards

If the product does not perform as described on this datasheet, we will offer a refund or replacement. For full details of the Abpromise, please visit <http://www.abcam.cn/abpromise> or contact our technical team.

### Terms and conditions

- Guarantee only valid for products bought direct from Abcam or one of our authorized distributors