

## Product datasheet

# Anti-HAND1 antibody ab46822

★★★★★ 2 Abreviews 1 图像

### 概述

产品名称	Anti-HAND1抗体
描述	兔多克隆抗体to HAND1
经测试应用	适用于: WB
种属反应性	与反应: Human 预测可用于: Mouse, Rat, Sheep, Rabbit, Chicken, Cow, Pig
免疫原	Synthetic peptide conjugated to KLH derived from within residues 150 to the C-terminus of Human HAND1.参阅Abcam的专有抗源政策(Peptide available as <a href="#">ab47013</a> .)
阳性对照	This antibody gave a positive signal in the following Human tissue lysates: Brain, Heart.

### 性能

形式	Liquid
存放说明	Shipped at 4°C. Store at +4°C short term (1-2 weeks). Upon delivery aliquot. Store at -20°C or -80°C. Avoid freeze / thaw cycle.
存储溶液	Preservative: 0.02% Sodium Azide Constituents: 1% BSA, PBS, pH 7.4
纯度	Immunogen affinity purified
克隆	多克隆
同种型	IgG

### 应用

Our [Abpromise guarantee](#) covers the use of **ab46822** in the following tested applications.

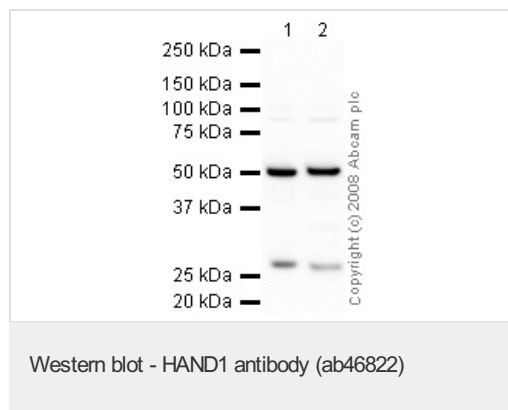
The application notes include recommended starting dilutions; optimal dilutions/concentrations should be determined by the end user.

应用	Ab评论	说明
WB	★★★★★	Use a concentration of 1 µg/ml. Detects a band of approximately 25.8 kDa (predicted molecular weight: 25.8 kDa).

## 靶标

<b>功能</b>	Transcription factor that plays an essential role in both trophoblast-giant cells differentiation and in cardiac morphogenesis. In the adult, could be required for ongoing expression of cardiac-specific genes. Binds the DNA sequence 5'-NRTCTG-3' (non-canonical E-box).
<b>组织特异性</b>	Heart.
<b>序列相似性</b>	Contains 1 basic helix-loop-helix (bHLH) domain.
<b>翻译后修饰</b>	Phosphorylation by PLK4 disrupts the interaction with MDFIC and leads to translocation into the nucleoplasm, allowing dimerization and transcription factor activity.
<b>细胞定位</b>	Nucleus > nucleoplasm. Nucleus > nucleolus. Interaction with MDFIC sequesters it into the nucleolus, preventing the transcription factor activity. Phosphorylation by PLK4 disrupts the interaction with MDFIC and releases it from the nucleolus, leading to transcription factor activity.

## 图片



**All lanes :** Anti-HAND1 antibody (ab46822)  
at 1 µg/ml

**Lane 1 :** Human brain tissue lysate - total  
protein ([ab29466](#))

**Lane 2 :** Human heart tissue lysate - total  
protein ([ab29431](#))

Lysates/proteins at 10 µg per lane.

### Secondary

Goat polyclonal to Rabbit IgG - H&L - Pre-  
Adsorbed (HRP) at 1/3000 dilution

Performed under reducing conditions.

**Predicted band size :** 25.8 kDa

**Observed band size :** 25.8 kDa

**Additional bands at :** 50 kDa. We are  
unsure as to the identity of these extra bands.

**Please note:** All products are "FOR RESEARCH USE ONLY AND ARE NOT INTENDED FOR DIAGNOSTIC OR THERAPEUTIC USE"

## Our Abpromise to you: Quality guaranteed and expert technical support

- Replacement or refund for products not performing as stated on the datasheet
- Valid for 12 months from date of delivery
- Response to your inquiry within 24 hours

- We provide support in Chinese, English, French, German, Japanese and Spanish
- Extensive multi-media technical resources to help you
- We investigate all quality concerns to ensure our products perform to the highest standards

If the product does not perform as described on this datasheet, we will offer a refund or replacement. For full details of the Abpromise, please visit <http://www.abcam.cn/abpromise> or contact our technical team.

### **Terms and conditions**

---

- Guarantee only valid for products bought direct from Abcam or one of our authorized distributors