

## Product datasheet

# Goat Anti-Rat IgG H&L (DyLight® 488) preadsorbed ab98420

2 References 2 图像

### 概述

产品名称	山羊Anti-Rat IgG H&L (DyLight® 488) preadsorbed
描述	山羊多克隆抗体二抗到大鼠IgG - H&L (DyLight® 488), pre-adsorbed
靶标种属	Rat
经测试应用	适用于: Flow Cyt, ICC/IF, IHC-P
最小交叉反应	Chicken, Cow, Goat, Horse, Human, Mouse, Rabbit, Sheep <a href="#">more details</a>
偶联物	DyLight® 488. Ex: 493nm, Em: 518nm

### 性能

形式	Liquid
存放说明	Shipped at 4°C. Store at +4°C.
存储溶液	Preservative: 0.09% Sodium Azide Constituents: 0.2% BSA, PBS
纯度	Immunogen affinity purified
纯化说明	This antibody was isolated by affinity chromatography using antigen coupled to agarose beads and conjugated to DyLight® 488.
克隆	多克隆
同种型	IgG

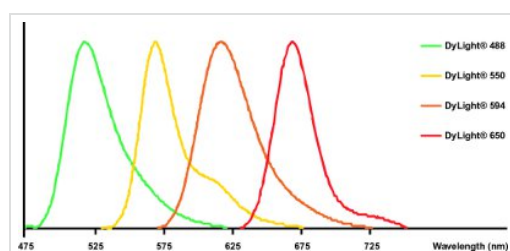
### 应用

Our [Abpromise guarantee](#) covers the use of **ab98420** in the following tested applications.

The application notes include recommended starting dilutions; optimal dilutions/concentrations should be determined by the end user.

应用	Ab评论	说明
Flow Cyt		1/50 - 1/200.
ICC/IF		1/50 - 1/500.
IHC-P		1/50 - 1/500.

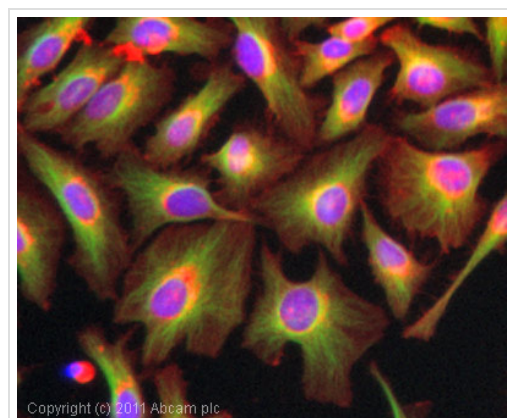
## 图片



DyLight® - Goat polyclonal Secondary Antibody to Rat IgG - H&L (DyLight® 488), pre-adsorbed (ab98420)

Emission spectra of DyLight® fluorochromes available in our catalog.

Line colors represent the approximate visible colors of the wavelength maxima.



Immunocytochemistry/ Immunofluorescence - Goat polyclonal Secondary Antibody to Rat IgG - H&L (DyLight® 488), pre-adsorbed (ab98420)

ICC/IF image of [ab6161](#) stained HeLa cells.

The cells were 100% methanol fixed (5 min) and then incubated in 1% BSA / 10% normal goat serum / 0.3M glycine in 0.1% PBS-Tween for 1h to permeabilise the cells and block non-specific protein-protein interactions. The cells were then incubated with the antibody ([ab6161](#), 1 µg/ml) overnight at +4°C. The secondary antibody (green) was DyLight® 488 goat anti-rat- H&L, pre-adsorbed (ab98420) used at a 1/250 dilution for 1h. Alexa Fluor® 594 WGA was used to label plasma membranes (red) at a 1/200 dilution for 1h. DAPI was used to stain the cell nuclei (blue) at a concentration of 1.43 µM.

**Please note:** All products are "FOR RESEARCH USE ONLY AND ARE NOT INTENDED FOR DIAGNOSTIC OR THERAPEUTIC USE"

## Our Abpromise to you: Quality guaranteed and expert technical support

- Replacement or refund for products not performing as stated on the datasheet
- Valid for 12 months from date of delivery
- Response to your inquiry within 24 hours
- We provide support in Chinese, English, French, German, Japanese and Spanish
- Extensive multi-media technical resources to help you
- We investigate all quality concerns to ensure our products perform to the highest standards

If the product does not perform as described on this datasheet, we will offer a refund or replacement. For full details of the Abpromise, please visit <http://www.abcam.cn/abpromise> or contact our technical team.

## Terms and conditions

---

- Guarantee only valid for products bought direct from Abcam or one of our authorized distributors